

Garibaldi
notes
1916.



DRAWN BY R. B. FULLER

Nature Lover: "Just a Few Hundred Feet More,
and Then—an Eagle's Nest!"

1924 1/2

Jaribaldi
notes
July 1916

Ralphus Plummer
Kyrleskaon
"Nest on Bartollett
Crest"

Garibaldi notes 1916

July 31st Left Vancouver 9.15 am
good trip all way up to
Stony Creek. Suspension Bdy
replaced old wooden structure
across Cheakimous Creek.

new erection on 4 wire ropes to wh.
small logs were lashed and a
light handrail on the S. side.
From this light foundation a
very much stronger Bridge could
be built, & certainly a
permanent one should take its
place. On leaving Bridge we
join Pemberton Trail & turn to
left past small ranch & across
Stony Creek. Very soon afterwards
a large blaze with B.C.M.C. inscribed
denotes where trail branches off
to Stony Creek & this trail lands

Plants noted en route 1(a)

Scarella unifoliata + one or
two *bifoliata*.

Alloctropa virgata

Monotropa multiflora

Clavaria sp. frequent

us just above the narrowest ①
part of the Creek + causes the
difficult + inconvenient crossing
at this point. Thereafter the creek
bank is followed to the sand bluff
near which the trail proper begins.
After about 4 hours on this
trail the "Lower Meadows" are reached

+ soon afterwards we get our first
glimpse of the West Bluff of B.T.
There is a little steep climbing
after this but in a short time
the undulating Upper or B.T.
meadows are reached. From 1½ to
2 hours on the upper part of the
trail + camp was reached
just as it became dark.

In about ½ hour a second
batch arrived by candle light
+ ~~at~~ about 10 pm the last of
the party arrived - all in.
Walking in the dark is much
more trying to amateurs, especially

(2a)

when there was so much (2)
snow & water on the ground,
the rapidly disappearing snow
made it somewhat treacherous
walking as the snowbridges
across creeks were disappearing.

Next day 1st Aug all seemed
well & a few were disposed to
rest all day, most of us however
fixed up our tents & beds with
brush - Abies - being the favourite
tree for this purpose. By lunch
time all was finished & after the
midday meal our party of
botanists - Miss Dowding, Miss Schaefer
(M^{rs} Heanny & Len Heanny) D^r A. H. H.
E. Belty, R. Dalton, F. Perry & L. D.
went up Panorama Ridge to top
where most of the usual species
were found in addition to
Saxifraga caespitosa which was
previously found only on Corrie Ridge

In the evening a log of (3a) *Abies lasiocarpa*? about 11 inches in diameter was sawn across & a guessing competition held as to how old the tree was. The guesses varied from 40 years to 1000 years the two extremes being by ladies, though some of the men's guesses were nearly as far off. The rings when counted were 312, indicating that in these alpine areas the trees seldom exceed this age when surrounded by other trees of the same kind or, as is frequent, by *Luzula mertensiana*.

On our way to the east end of (3) the ridge one or two interesting clumps of vegetation were found. These were in long narrow lines & appeared as if a narrow log had decayed under the surface of the soil. It was ascertained however that these resulted from the characteristic mode of the snow melting in long narrow somewhat narrow patches, the water trickling in miniature creeks & carrying fine silt from higher up, the interspaces between the small sharp edged or somewhat flattened rocks (stones) and in these lines between the patches of snow vegetation makes its first appearance because they are first filled up. On the flat alplands something similar takes place, one may occasionally see lines of willows or other plants which had evidently had a few years start ahead of the intervening areas.

Book

M^r: J. Slatter
Daisy Lake
Masonic Temple Vancouver
gave information re. the
poisoning of horses through
eating *Veratrum viride*. Gun
powder was used as an
antidote. The poison affected
the kidneys. The horses first
froth at the mouth & later they
are affected by frequent stopping
& to urinate but without
relief.

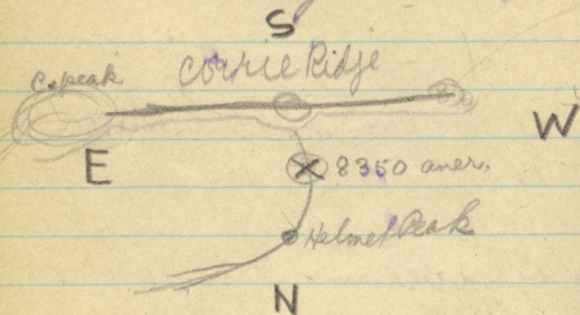
Aug 2nd we intended going
to Jentian Ridge - across
Helmets Glacier. Practically
all the party were to go. There
being 3 minor parties. (1) one to
cross the glacier & return via
Panorama Ridge, (2) one to go on
to Jentian Ridge, (3) one to go on
beyond that to Castle towers.
Ours was the (2) party, but
early in the morning the rain
poured & caused us to cancel
our trip.

July 1st Ameroid 8:30 am 6400 ft

Aug 3rd went to Gentian &
Polemonium ridges across
Helmet glacier started off on
glacier at 10:15 arrived at other
side 11:50

Aug 4th went up to E. Bluff
& Black Lush in forenoon
& to the crater in the
afternoon

Saturday 5th Aug.
 on Southern summit of
 Helmet Ridge Aner 8350
 Corrie Ridge apparently
 runs almost due E & W.
 Helmet Ridge forms a
 crescent cutting on to
 Corrie Ridge



Look Panorama series
 of Corrie Ridge from
 Southern summit of
 Helmet Ridge

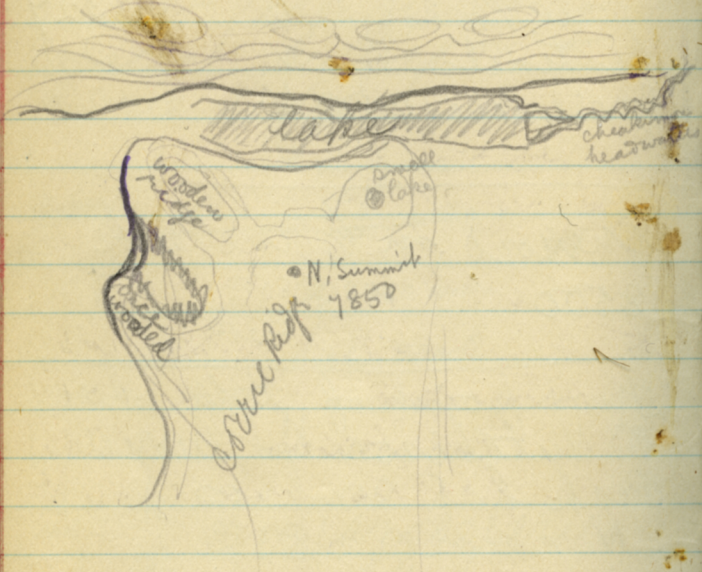
6400 8350
 5100 1300
 1300 7050

Compass bearings
 Southern summit
 Helmet Ridge to :-
 Black Tusk N. needle at 100
 Helmet Peak N. " " 44
 Corrie Peak N. " " 324
 Sentinel N. " " 200
 Corrie lake (centre) N. " " 11

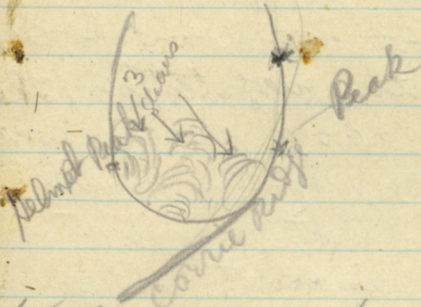
Aneroid on Corrie Peak
 8500 $\begin{matrix} 8500 \\ 1300 \\ \hline 7200 \end{matrix}$

From point of Ridge where
 Dr. Hutchison sat, Corrie
 Peak has compass
 N. needle 85°

All N. Summit Corrie
Ridge 7850 aner.



Compass bearings
on northern summit
of Corrie Ridge (*)



to Sentinel N. needle	191°
" Helmel Peak "	131°
" Black Lusk "	126°
" Empetrum Peak "	104°

The summit of the Ridge from the Peak to the N. Summit is exposed no trees except at the sides especially on the East side. The west side is more rocky like a large rockslide beginning to be covered with vegetation. The east side has a sparse covering of hemlock. On the summit of the ridge *Phlox**, *Poa alpina*+
arctica+
Arenaria+ (small clumps)
*Silene acaulis**
Sedum averyanum+
Clinus albicaulis⊖
Antennaria media+
*Pentstemon pulchellus**
Draba alpina-
Sibbaldia procumbens+
Carex festiva+
Potentilla
*Bryanthus glanduliflorus**+
*intermedius**

Sunday 7 am

aneroid 6800 at camping ground

6100 at bottom of Corrie valley, fairly wide & flat meadow with Corrie Lake at end

6500 at small lake on ledge on east side of Helmel ridge (in Corrie valley)

Plants on N. moraine of Helmel glacier n. Peak
Senecio Fremontii
Phacelia sericea
Luzula alpestris

Returned with one of my heels & a toe chaffed & decided to stay in camp next day

assisted in bridging Anemulus
Creek.

D. Hutchinson (Moraine Sphinx)
Equisetum

Monday, 7th Aug
Attending to pressed specimens
F. Perry at Red Mountain
brought in *Empetrum nigrum*

Sentinel Ridge

Lonicera

Fragaria

Metella trifida

Viola glabella

Samolus

Saxifraga Lyalli

R. Dalton

Moraine Sphinx Glacier

Pinus allicaulis (Tahiti Ridge)

Rubus pedatus (Sentinel Ridge)

Calendar.

~~Sat. 31 July~~

Sun	1	
Mon	2	31
Tues	3	1
Wed	4	2
Thurs	5	3
Friday	6	4
Sat	7	5
Sun	8	6
Mon	9	7
Tues	10	8
Wed	11	9 ✓
Thurs	12	10
Frid	13	11
Sat	14	12

Tuesday 8th

Went down Munnulask
~~Saw~~ saw quite a no. of
Pinus albicaulis in
 fruit. got 1 young tree + 2
Abies grandis. got cones of
Abies lasiocarpa for D.H.
 + prepared them in Chromo
 - acetic (chopped down trees)
 Collected some specimens
 for herbarium + garden
 Pressing specimens

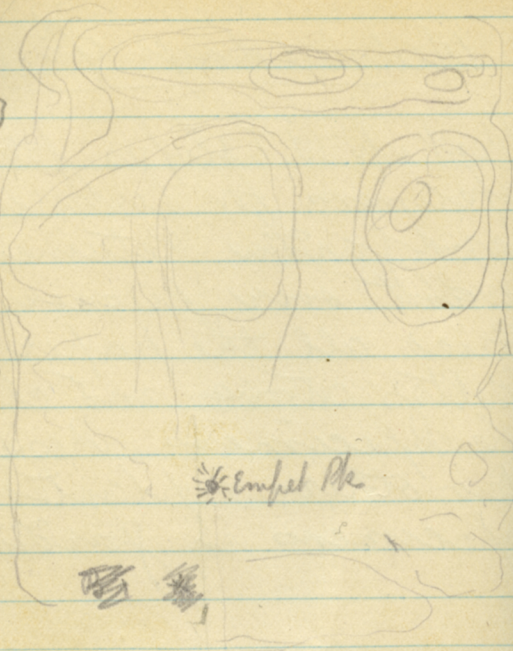
Wednesday 9th Aug.

Went up B.T. slopes for
specimens for herbarium
and garden. Returned &
went over presser.

Dried all the paper at
Belt's stove and changed
the specimens. Pressed a
few others & planted
specimens in garden

Ridge of B.T. to Cheakings

J



*Empet. Pk

BT

*
Jarebaldi

6600

57

Thursday 10th

North

Empetrum to Helmet 240°

" " Black T. 180°

" to S. Summit Hel. Rsp 255°

" " Corrie Pk 264°

alt Empet. Pk. 4550

↑

Thursday 18th

North needle

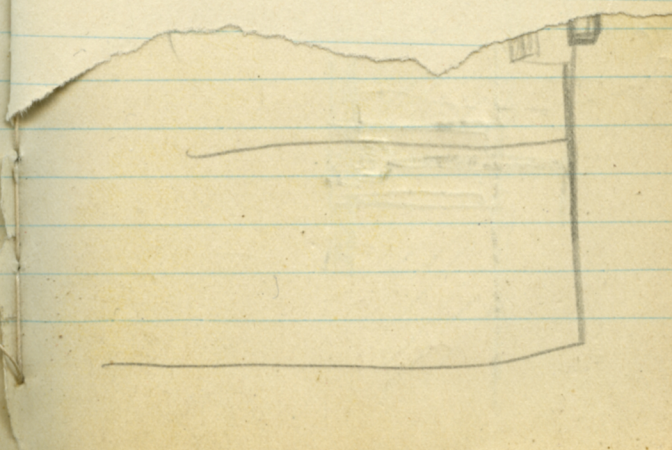
Empetrum to Helmet 270°

" " B. Tusk 180°

" " Corrie Pk 267°

" " S. Summit of
Helmet Ridge 255°

5 / $1\frac{1}{2}$ - $3\frac{1}{4}$ T @ 15¢	75¢
25 / $3\frac{1}{4} \times \frac{1}{2}$ " T @ 12¢	3.00
25 / $\frac{1}{2}$ " Elbows @ 10¢	2.50
25 / Hose fits $\frac{1}{2}$ " @ 50¢?	12.50
5 / $\frac{1}{2}$ " stop cocks @ 75¢	3.75
	<u>22.50</u>



3/4 - 9¢ ft

12

1/2" main

320
 9
 28080
 5

170
 3
 51040
 12¢ ft.

\$6120

144.00

61.20

\$205.20

22.50

297.70

1/2" main

17 54

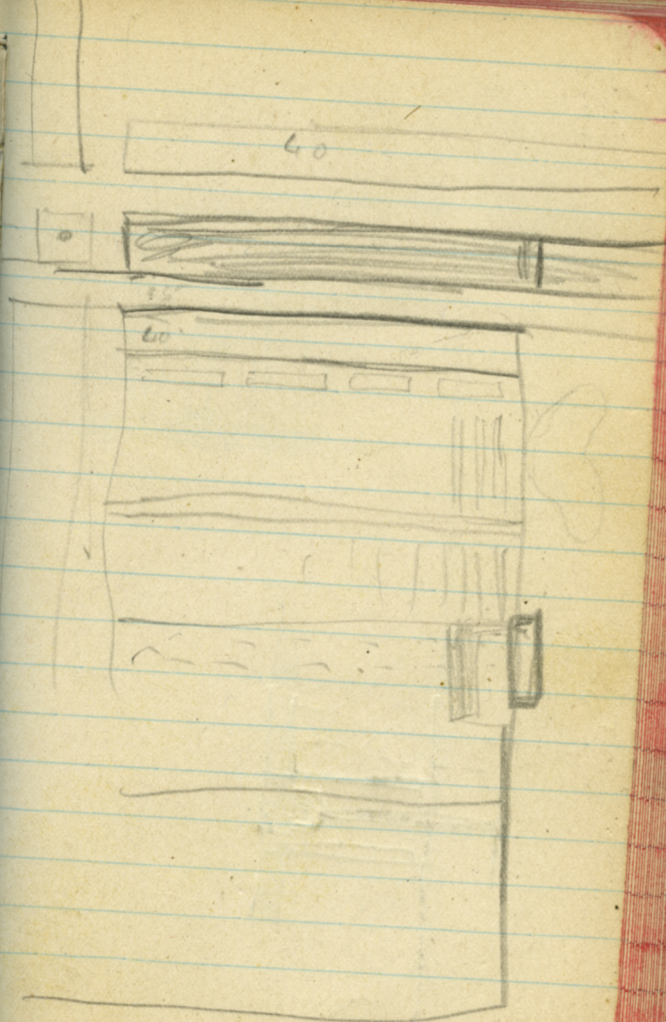
34

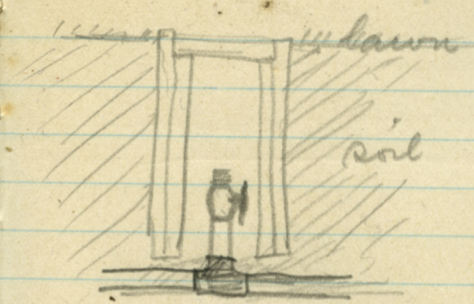
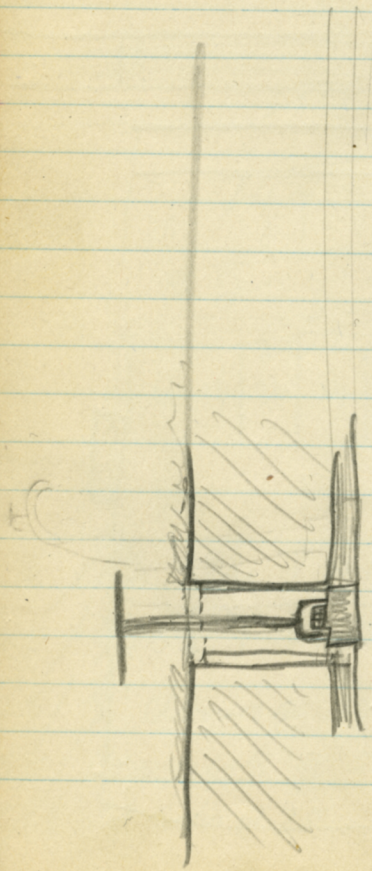
34

34

17

3/4" branches





Mayor's Cup
Garden Competition
Judging results

No 26

trap	2	
con	2	
beds	3	12
lay out	3	
bulw	2	
absence weed	5	
surface	2	12
main	3	
no var.	8	27
kind	4	15
gen effect habit	4	
" colour	4	12
	4	
Quality		8

59

No manure, beet poor, carrots etc.
improvised, small tomatoes have
in tool shed.

M. White 19

M. Brooks

No. 6

Prep. paths	2	}	14
Conventions	2		
size shape beds	3		
General layout	4		
authentic	2		
absence weeds	6	}	13
surface	2		
inner drain	5		
No. of Var	8	}	15
Kind	7		
Habit	4	}	12
color	4		
shape	4		
Quality			14
			<hr/> 68

M Brooks
old flower beds

no 48

Belgian

Paths	2	}	16
Convenience	2		
size rubble beds	4		
lay out	4		
Gutline	3	}	16
absence weeds	7		
surface	2		
man drain	8	}	8+
no var	4		
Kind of var	4	}	15
Habit	5		
Colour	5		
Space	5	}	15-
Quality			

~~69~~ 70
Final mark

good lawn, mostly ovalas +
 lettuce

no 35

Baths	2	}	12
Convenience	1		
Size shape beds	3		
Lay out	4		
Outline	2		
abundance woods	6	}	13
surface	2		
manor drain	5		
no. of Vases	5	}	13
Kind	8		
Eff. habit	4	}	13
" colour	4		
space	5		
Quality			14
			<hr/> 65

Dahlias, roses, lawn, pinet hedge
have to step over bed to lawn in
front. Antwerp
Englishman

No 43

In Planning

Paths	2	}	14
Convenience	2		
Size & shapes	4		
General layout	4		
but line	2	}	15
absence weeds	6		
surface	1		
Drain & drainage	8		
No. varieties	6	}	12
Kind	6		
Effect habit	3	}	13
" colour	5		
Space			15
Quality			
			<hr/> 69

Good use of links as sand binder
 back garden too much crowded, cut up
 into too narrow borders

no
-49

Prep.	1	}	12
Convenience	2		
Size slope beds	2		
cut line	1		
sun lay out	4		
absence weeds	2	}	8
surface	1		
man. cut drain	5	}	8
no var.	4		
kind	4		
Habit.	4	}	12
Color.	5		
space	3		
Quality			12 ⁷
	final		<u>52</u>

Back veg garden very weedy.
aphis on currants. Brunella
in lawn. Purple Rambler
landscaped garden.

Jan 55 / Mr. Webb

Paths	2	}	15
Commence	2		
Size shape beds	4		
General lay out	5		
but line	2	}	14
absence weeds	5		
surface	2		
Iron chain	7	}	11
Number of Var.	5		
Kind	6		
Habit	4		
Colour	5		
Place	5	}	14
Quality			
			<hr/> 68

Azalea Rhodod. lawn good 7-8 yrs old
beds not very square cut

No. 50

Prep.	2	}	16
Convenience	2		
Size & slope beds	5		
General layout	5		
Outline	2	}	15
absence of roads	6		
Surface	2	}	15
Man drain	4		
No varieties	8	}	15
Kind "	4		
Arrangement	5	}	15
Colour.	5		
Space	5		
Quality	veg. 75%	}	12
	veg. 35%		
	110		

113

Good cedar hedge, large lot well kept -
herbaceous border at back poor
trees on boulevard not shade trees
vegetables flowered market in quality
herbaceous border at front

no 5

ml Black

Prep	1	}	12
Conven	2		
Size, vol, beds	4		
Outline	1		
Gen layout	4		
absence weed.	6	}	16-
surface	2		
main drain	8		
W ² Var	8	}	14
Kind	6		
Habit	3	}	12
Color	5		
space	4		
Quality			1 ^m
			<hr/> ny

Concrete compost pit

No 8

prep	1	}	12
conv.	2		
shape & shape	3		
lay out	3		
out line	2		
absence weeds	2	}	9
surface	2		
man drain.	5	}	10
N ^o of Var.	5		
kind	5		
General Off. Material	5	}	13
Color	4		
space	4		
Quality	14		14
			<hr/> 56

Green house, peaty soil at back,
lawn very patchy

56
62

118
58 Final

no 46 m Rennie

Prof.	2	}	13
Conven	2		
Size & shape	2		
lay out	3		
bul line	2		

absence weeds	7	}	14
surface	2		
mans drain	8	}	13
no of Vari	4		
kind	6	}	12
Effect Habit	4		
color	4	}	12
space	4		

Quality			14
			<u>72</u>

Herbaceous border not defined
 vegs grown in small patches
 fls & vegs. mixed.

no 14 Italian? Hello

Prep.	2	}	11
Conven.	1		
Size & sh Beds	2		
General lay out	3		
Out line	2		
Absence weed	5	}	14
surface	2		
man drain	7		
no varieties	5+	}	10+
Kind	5		
Gen Eff. Habit	4	}	12
Color.	4		
space	3		
Quality			14

61.5

Two dogs, fenced plots. Veggies & flowers
rather mixed.

(worth 16 quality in Aug)

No 40 in the year

Prep	2	}	12
Conven	1		
Size shape	3		
Lay out	4		
Outline	2		
Weeds	4	}	10
surface	1		
man. drain	5		
no. Vars.	5	}	10
Kind	5		
Am. habit	6	}	14
color	4		
space	4		
Quality			13
			<u>59</u>

Lawn infested with *Holcus* + *berastum*. Veg Beds very weedy

Potatoes on boulevard

no 29 / old bachelor

Paths prep	2	}	16
Convenient	3		
Size & shape	4		
General layout	4		
Outline	3		
Weeds	4	}	15
surface	2		
Man drain	6		
No. of Var	4	}	8
Kind	4		
Effect Habit	4	}	9
Colour	3		
Space	2		
Quality	12		12
			<hr/> 60

very neat but had room for more flowers. Dahlias interfered with central path. Low plants on side borders.

No 42 Parker

Paths prep	1	}	8
Convenience	1		
Size & shape	2		
Layout	3-		
Gut line	1		
weeds	5	}	13
surface	2		
Iron. drain	2		
number vars	6-	}	11
Kind	5		
effect habit	5	}	13
Color	4		
space	4		
Quality	12		13
			<hr/> 58

Raised all their own flowering plants
Design rather piece-meal
tubs on stair.

No 45 m. Proctor

Prep	1-	}	9
Conven	1		
Size etc	2		
Layout	4		
Outline	1		
Weeds	3	}	9
Surface	1		
Main drain	5		
Number var	5	}	10
Kind	5		
Effect Habit	4-	}	12
Colour	5+		
Space	3		
Quality	10		10
			<hr/> 50

Veg. garden reflected. Flowers on
vibranda effective flower
pots on stair

No 39 bar driver
m^{rs} Macdonald

Prep 2	}	12
Conv. 1		
Size est. 3		
Lay out 4		
Outline 2		
Weeds 6	}	15
Surface 2		
man drain 4		
Number 5-	}	10-
Kind 5		
Eff. Habit 5	}	15
Color 6		
Space 5		
Quality 15		15
		<hr/> 67

Good lawn, small quantities
of vegg. but well grown. Loose
Rocks round boulders.

no 54 / school Jaintia
Venemont

Path prep	2	}	12-		
Convenience	2				
Size ash.	3				
Layout	4-				
Grasses	2				
Weeds	4				
surface	1			11	10
Man drain	6				
No var.	5			}	-10
Kind of "	5				
Soil	4	}	11		
Colour	4				
Space	3				
Quality	13		13		
			<hr/> 57		

Potatoes infested by *Spongiospora*?
Cystopus? on potato.

No. 27 Haines English man

Paths	2	}	11
Convenience	2		
Size ash,	3		
Layout	4		
Outline	2		
to			
Weeds	5	}	13
Surface	2		
Drainage drain	6		
No varieties	5	}	10 -
Kind	5		
Habit	3		
Colour	3		
Space	4	}	16
Quality			
			12 +
			<hr/> 57

Small bunches sweet peas.

No 52

Mr. Dighton
Inverness St

Preparation	2	}	13
Convenience	2		
Size + shape	4		
Outline	2		
Lay out	4		
weeds	6	}	14
Surface	2		
man drain	0		
number var ^s	5	}	10
Kind	5		
Habit	5	}	14
Colour	5		
Space	4		
Quality	15		15
			<u>66</u>

Prof Klinder 56
2 | 122
61 —

no 2 Mr Arkell

prepar.	1	}	12
Convenience	2		
Size & Shape	3		
lay out	4		
Outline	2		
weeds	6	}	14
surface	2		
man. drain	6		
No Varieties	6	}	10
Kind	4		
Eff. habit	3+	}	10
Colour	3+		
Space	4		
Quality	13		13
			<hr/> 59+

attempt at landscape
gardening Mr. creek
1/2 acre of ground

27/5/17

alopeurus geniculatus
Common on road to
Pt Roberts & over all the
district

Crataegus * on Indian
Reserve

Amelanchier +

Cerastium arvense *

Delphinium menz *

Collinsia pauciflora *

Achillea *

Berberis aquifolium - ②

" *nervosa* +

Philadelphus -

Holodiscus + *Acer macrocarpum* *

Trillium + *Siarella* +

Cornus nuttallii -

" ②

1 *

2 *

3 +

4 ⊗

5 ⊖ wet places

6