

Notes on trip to
Bot. Congreas
Ithaca, New York
1926

Professor John Davidson, F.L.S.
University of British Columbia
VANCOUVER B.C.
— CANADA —

Aug. 1926

Notes on C.P.R. 13/8/26

Western White Pine in good stands
& excellent natural regeneration
west of Craigellachie

Both Poplars very conspicuous
east of above.

Tsuga heterophylla near glacier

Picea Engelmannii? common

Corylus occidentalis? very conspicuous
along track between Rogers & Giffbank
also many Willows, Poplars **.

Pinus monticola + long cones conspicuous

Douglas fir * *Tsuga heterophylla*

Mullein common in localities ⊕
from Revelstoke - Rogers

Lodgepole Pine + ⊕ between
Stoney Creek & Rogers

Juniperus scopulorum common at

apocynum androse? Donald

very abundant ** all through

Donald district

Potentilla fruticosa ⊕ between

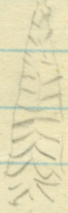
Forde & Golden also

on the Alberta side of the
divide

Looks like big stands of
Lodgepole Pine round LK
Louise station

low

^{balsamifera by leaves}
Populus-like tremuloides
fairly abundant all round
Coats William Arthur * +
some spruce + Abies * * *
larch - (but no drooping tip)

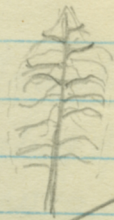
 narrow conical tree
upper branches ascending
middle " spreading
lower " drooping
like Abies! but no cones
visible (cones seen later, seemed
purple)

Betula forms very dense
stands of tall slim stems, a
few Populus interspersed, in
above region * *

Eupatorium angustifol *
Araphalis * Solidago *
all in sharp masses

Abies in habit resembles
" lasiocarpa

very interesting flora East
of Heron Bay in somewhat
marshy ground. A tall yellow
spike resembling ^{or yellow paint brush.} *Linaria vulgaris*
but the color of *Cypripum elatum*
looked somewhat Cruciferae but has
leaves like *Plantago lanceolata* or
Solidago. Also what appeared to be
a rush with white flowers. Rush in
dense clumps. and a blue
flower like *Veronica americana*
around & east of White River
is a Pine with habit of D.F.
short leaved, small cones
like *Banksiana* 25-30 ft high



Vaccinium canadense,
common nearly all the way
from Fort William east.

Composite same as pink one in
garden at Kerrisdale

~~*Caragana*~~
shrub like tall *Vacc. canadense*
with creamy white fls in spike
or terminal raceme like *Saxifraga*

Castalia White Water Lily
in lake between Amyot & Gray
No bracken seen yet
since leaving O.B.

seen later in Enfield Ravine
Othaca

Toronto is a nice clean city &
feeling of respectability, green
lawns, shade trees, & well painted
country flat like prairie. But
lots of maple & a few *Pinus strobus*

Maple Falls district
Sumach on rail embank
W. Hamilton & Lk Ontario
Echinocystis \oplus near

Hamilton, Bel Ham. & Welland
is great orchard country.
South of Hamilton homes have
back gardens like London E.

Vines, Hollyhocks, Castor oil pl.
Convolvulus major. ^{Cannas} Verbena's

From West of Toronto, S. Sth of
Hamilton several fields of
white Sweet Clover. also Buckwheat

Creosote like Sumach, but
branches spreading widely & paler green
in color; abundant on railway
embankments.

The high valley is like continuation
of the country around Toronto.
Very flat where Buffalo had settled
with small farms on each of which
are a few clumps of trees.
Crops mostly grain, pasture turnips

4 Buffalo?

The section of the city around the station is very old rickety & fifth negroes & other loafers hanging around.

Lower part of Lehigh Valley is somewhat like Strathpuffer Valley Scotland, only the Lehigh water sheds are not so high.

The geol. form. is sedimentary several hundred feet of rock layer upon layer being revealed in quarries.

New Phytology
Blancroft

Summary of origin of
Monocots. 1911?

F.A. Spring

J. A. Spragues paper

1

2 Definition of group

(1) All comb. which are homonyms
rejected

(2) All well established name
which are homonyms
shd be conserved

(3) all others rejected

Latin diagnosis shd not be
compulsory; since 1958 over
10,000 new species have been
described without latin diag.

Trip up Enfield
Glen

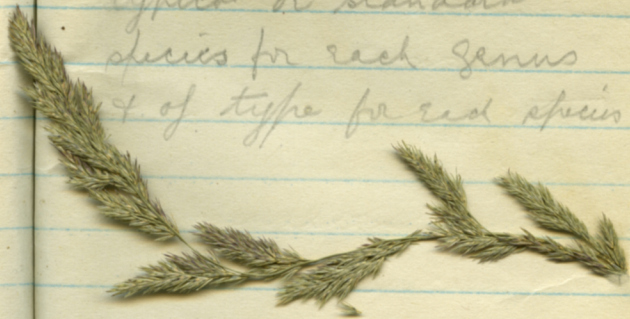
Quercus maxima
var *brevata* seeds &
acorn

L. H. Bailey's Paper

Agrosticism of Hybrids
~~they are feathers~~
mostly platitudes & gallery play


Nitchcock

Urgent need of stability
of genera by naming
typical or standard
species for each genus
& of type for each species

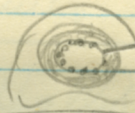


Trichostema
in Enfield Ravine

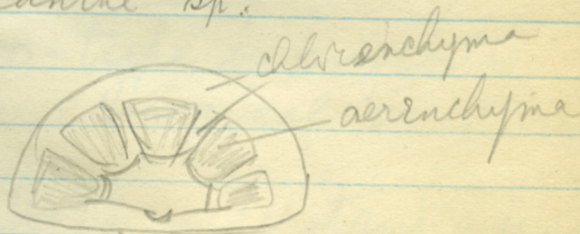
Paper by
John Briquet of
Geneva Botanique Jan.

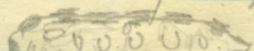
Hydrocotyle has a 
continuous acriferous tissue

Cicuta  dark part

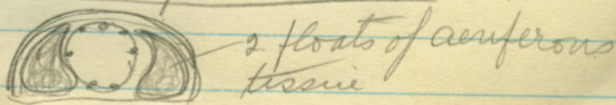
Perula  vittae
"aerenchyma"

Benanthe sp?



The cell walls of the aerenchyma
are occasionally but rarely
thickened 

Lilaeopsis lineata



There are aquatic plants
which have absolutely no
trace of floats. Such often
have specially developed
lacuna or hollow leaves
with septa *Lilaeopsis* etc
so that the plant or part
of the plant floats bearing
the fruits

H. M. Hall's paper

"Eco-type" is suggested
for ecological variations

"Better to understand a few
things than to misunderstand
many things"

In discussion Rydberg
said Hall was a "lumper" who
swung too far the other
way to avoid being a "splitter"

LH Bailey has somewhat
of red in the cap features but
white skin
Very long with det.

Wednesday 2.30
Symposium

Seager & Shear

Nomenclature = a ^{scheme of security} means of
stability, uniformity, rapidity

Agaricus campestris OK
(Saliota NG)

Polyporus type P. brunnalis

Xylaria Valsa

Ramsbottom (Brit. Mus.)

pointed out that Hitchcock's interpretation
of the Internat. Rules was not to be
relied on. It is different from the San. Rel.
Nomenclature is the naming of individuals
Taxonomy is fitting these names into
a scheme of classification

Dr. Arthur query re/starting
at Persoon was ably answered
by Dr. another Amer.
mycologist who thought it was the
wisest selection he knew of because
these were the first collections & the
names were applied to the specimens
which could easily be ascertained because
they were so well preserved. Previous
that, drawing observation & description
could not be relied on.

Dr. Arthur didn't read paper
Columb agreed with Shear & Ramelton.
Drew up a list of Eredinales
which nobody uses more than
that he does not use them himself.
Used the term "teliospore" - not
"teliospore" - *ascium* not *ascidium*
Spoke in rather criticising tone.
did not agree with starting Quets
at Persoon - why not 1/3 same
as other plants.

next speaker Dr. Kaufman
saw no reason to dig into
the history for forgotten names
They are of no real value to the
modern mycologist. He deals chiefly
with Agaricaceae. Depends entirely
on his measure of common sense!

Fusarium cubense
has saprophytic & parasitic
strains
forma 1 Will on banana
" 2
" 3
" 4

Dr Went's evening
lecture on
Plant movements

Mimosa pudica 2

Crucif 2

Bean radicle
bedding in stender shoots +

heliotropic roots —

Leaves + 4

Moulds + "

Leaves in dark exposed 2 secs

+ placed in dark, all
slightly turned

For Phycomycetes small
quantities of light +, lay

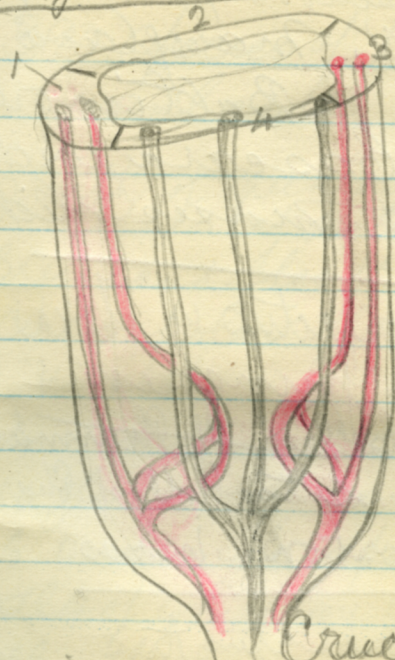
" " " — heliotropic

A few graphs of
response to light by
Phycomycetes

Morphology
A. J. Eames

Youthful
contributor

1-4
carpels



Crucif ~~ovary~~
said to be composed of 2 pairs
of carpels. 2 higher than the
other 2. Two are now
suppressed, but splitting takes
place at ventral sutures.
Two of the 3 bundles fuse again
& occupy position are anteposed
instead of 3 around the wall

C. C. Plitt
School of Pharmacy
Univ. Maryland
Baltimore

Bark of Cascara with
adhering mosses & lichens

Send Prospectus re flora
to H. W. Youngken
Prof. College of Pharmacie
Massachusetts Coll of Pharmacy
Boston, Mass

Send Prospectus to
^{Levy} L. R. Abrams
Stanford

Thursday

390 species of plants in
Greenland

South of Greenland
Copies of Betula

Greenland has the
circumpolar flora

Unatak area 8 species found
In mountains 1000-2000 ft

60 "glacier" species

6 Endemic species ^{with 19} in ^{W. G.} (W. G.)

all 4 of which are *Sheraracum*

All others are found in
some of all the adjacent
countries. American sps
are more common there than
European. America is closer
to Greenland than Europe is.

Water is of no importance as
a means of transportation

except by transportation
of plants frozen in bits
of ice breaking off from shore.
Most arctic plants are found
in coast. areas.

Some of Greenland flora
introduced by sheep, or hay
to feed the sheep & cows. These
are some

Grasses & Sedges numerous
Sedges rare in N. Grasses
more common.

40 sps *ibidex* in S, 2 or 3 in N
Leguminosae (1 or 2)

No true viviparation known
in Greenland

Lotus trifolia is found
in south part of Greenland

R.H.S. No.?
= Ray's History Supplement

of James Arborelius
Redher has a bad
impediment in his
speech, unable to
express himself

Barnhart

Friday

~~abrams~~

Pinus radiata said to be
endemic in California

~~Papaver~~

Has many endemics from
the early tertiary to the
mesozoic.

Pendle (Brit-Museum 1756)

Has Sloan, coll.; Banks coll
of specimens & books.

Sloan went to Jamaica
collected spec. mounted in volumes
very interesting acc^t of former
collectors in U.S.

Solander Bartram, Lawson
etc Illustrate by plates from
shells of collections & copies
of mss. descriptions etc.

Send seeds of native
Papaver to

M. D. Malte

Keep seeds of each
specimen by itself
for Cytological work

A. J. Hill ^{show} slides of
aroid
flr 6 ft high
4" across

from Sumatra
leaves 12-15 ft for
odor in proportion

Amorpha phyllalis ^F
Titanium
also seen at Chicago Bot Dept - ^{Stanley} PR?

Prof Owen Nelson

Illustrated by reference to tree
root - biology
dichot trunk - zoo + bot
taxonomy is not a branch
" " the f v systems
Suggestion to incorporate taxonomy
in all curricula in secondary
schools to enable the students

to use floras intelligently,
names with author & full
citation recommended
both for genera & species
Part 1 by itself and
Part 1 + 2 together
never part 2 by itself

P. A. Rydberg

Say taxonomy ~~is~~ the writing
up the descriptions of species
& should be phytographic

Severe criticism of
Hall & Clements flora of
Rocky mountains

was given 20 minutes for paper
but wrote one wh. would have
exceeded the 40 min obtained
by Skotsberg giving up his time

had to be reminded of the
time, by the chairman &
had to cut out many pages.
Admits he is a splitter

At 12. ^{noon} Gen. meet. of Conf.

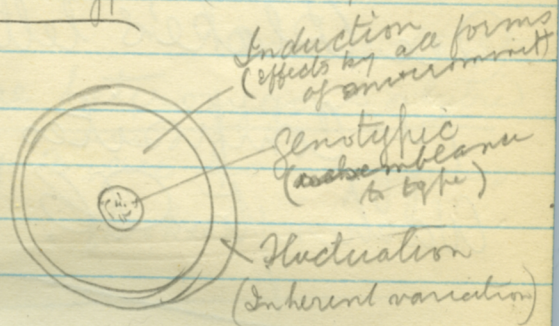
Resolution

It is the sense of the Int.
In. Conf. that the proper
maintenance, increase,
accessibility and utilization
of the great herbaria of the
world are matters of international
~~concern~~ not merely to bot. sc.
but to the nations which profit
through the contributions therefrom
to the advance of civilization.

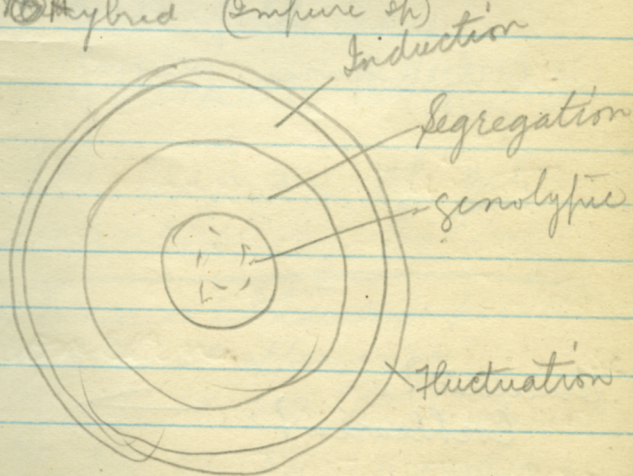
2:30 Friday

G. H. Shull

monotypic (Pure species)



Hybrid (Impure sp)



See Blake's letter
re Composites
Washington D.C.

(Is Blake Robinsons colleague?)

Cruciferae?
Cochlearia? →

Bradley Davis
Ann Arbor Mich

Seeds *Oenothera biennis*
muricata etc
are heterozygous or hybrid
only 3 ^{species} are homozygous
O. Hookeri

Ch. Ostenfeld says
systematic Botany is
the climax of all
branches of Botany

Chromosomes in ^{2 sets} identical plants
from external appearance

- { (1) 17, 19, 27 Plants raised
from 1 parent
(2) 21, 27, 32 " another "
(3) 21, 27, 32 " " "

No 3 was quite unlike No 2
4 was expected to show a greater diff

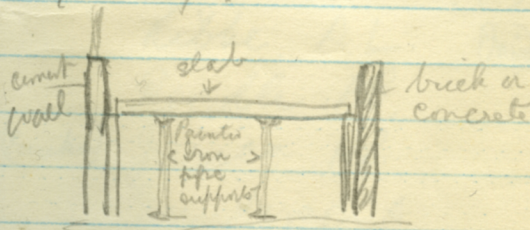
Botany Dept

Stone Hall one of
Coll of Agr group

3 flr about 9 am

Plantago major
& Taraxacum
bad weed at Cornell
on lawns & playing fields

For bottom heat in gr. house
do not use wood on any
account. Wood at Cornell
rotting.



Zoology Photo1st row

Hazen E.E.	U.S.
Sprague T.A.	Eng
Hitchcock AS	U.S.
Hill A.W.	Eng
Buquet John	Switz.
Wettstein B.	Austria
Gstenfeld CH.	Denmark
Bergs Aldwin	German at N.Y.
Bailey L.H.	U.S.
Erlanson E.W. (Mrs)	U.S.
Kebbe, A.L.	(Miss) "
Rendle AB.	Eng
(Eureka) Jurica H.B.	U.S.
Sunderson A	U.S.

2nd Row Sherriff, E.E. U.S.

Shear, C.L. U.S.

Arthur J.B. U.S.

Gleason, H.A. U.S.

Ehlers, J.H. U.S.

Domir, Karl
Czechoslovakia

Robinson B.L.	US
Greenman Jm,	US.
Jepson W.L.	US
Rehder A.	US
Howe M.C.	US
Johnston I.M.	US
Hall H.M.	US
Hreams L.R.	US

3rd Row

Wm, W.C.	(China Collected)
Fogg, Jm.	US
Rydberg P.O.	US.
Gates F.C.	US
Barnhart, J.H.	U.S.
Nelson, Owen	US.
Johnson F.W.	US
Pennell F.W.	US
VanEseltine G.B.	US.
Davidson John ✓	Bl
Lurner J.A.	US.
Young J.P.	US
Blake S.F.	US.
Fernald M.L.	US

Back Row

Standley P. C.	US.
Bacigalupi R.	(Whilly Crk.) US
Payson E B	US
Manning W E,	US
Smith H. H.,	US
Lovrey G. S.	US
Warner S. R.	(Loran) US
Fuller am	
St John Harold	US
Darlington H. T.	US
De France J. A.	US

Amer Mus Nat Hist

Indian Coll excellent
^{very large}
Wigwams with inhabitants.

Story telling

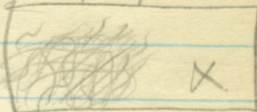
Basketry designs of Hopi
are wonderful.

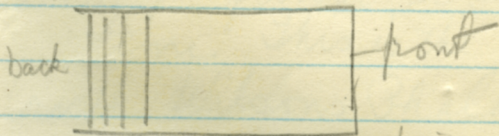
Panel wall paintings rather
overdone - too artistic.

Trees exhibit excellent
large size transparencys
38 x 24

Glass models of Rhizopod
by H Mueller (after Rastbach)
are wonderful pieces
of work

Models of Holothurians good

Effect of mass of Gostere
obtained by several plates of
glass with wavy clumpo painted
on
aquarium pool  X



Glass plates with plaques of Gostere
painted as above at X

Get some Pink cornus flouda
& cross with Nuttallii

Sheep in B. acc. to AM of NH.
Rocky mts Bighorn in S.E. B6
stones in N. B6 (Louis stones)
The white ^{Dalles} ~~sheep~~ is given for
mackenzie but not for B6
of the Wall

Birds collect large & will
done. Roof depicts flight.

Proposed African Room
Elephants, lions, gorillas
sl 2

One case shows Anemone
nemorosa & Campanula
rot. in flower at same
time. This is the case
with Wilsons Phalarope

Many of the plants used
in bird habitats are models
apparently way basis
some are rather limp &
many are coppery green

The models however are
quite good & must be very
expensive

Very large collection of stone
carving & ancient - prehistoric
pottery.

Bird groups. really
1st class blending
fore ground into back
groups very expert

Gall at Ithaca
Sedge hoy gall
(*Acrasps erinacei*?)

Large gall from Seattle?
Spongy? gall
amphibolips
spongifer?



On Hudson River trip
From Bear Mt North
the scenery resembles that
of Loch Ness & the canal,
low mountains & occasional
grass flats or meadows
Trees most deciduous
with an occasional
evergreen. Day, foggy &
rainy looking abroad.

Part in West Point is like
Plumbers & Active Pass
At Catskill the
Hotel agents are apparently
not allowed to shout &
molest passengers on
landing. A rope is placed to
limit their encroachment &
a regular array of multicolored
signs are borne aloft indicat

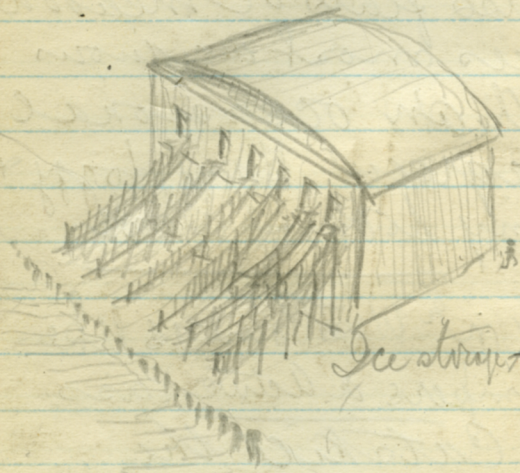
the various hotels

Only one man's voice was heard shouting the name of the hotel, presumably managed by the shipping company

all along the West shore of the Upper Hudson in the shadow of rocky bluffs or steep slopes, ice storage houses are common made of wood with many chutes leading from water to near the roof

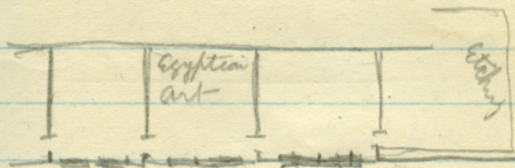
at Utica saw
Remington T.W. works

Catalpa is the principal & most popular tree for shade trees in Cleveland.



Ice storage house

Cleveland Museum
of Art



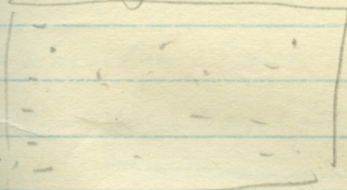
Separate rooms, high roof
windows on one side
gives 3 sides wall space
top half of wall is light
reflector

Larger room at corner is
Colonial art Paintings &
silverware, large flat
roof light, no wall lights
There is a very good library
on branches such as
Ceramics Photography
Furniture Textiles, ancient art
Indian art Modern.
Art exhibits & collections, museums

Architecture art sales
architecture, Painting Sculpture

Cleveland Museum of
Natural History

Birds mounted individually
in large cases 7 x 4 x 1 foot



Prof J.E. Hyde desires a large
globule of resin
C.B. or Sp gum
Cleveland Mus. of N.H.
Cleveland
Ohio

They own their printing plant &
besides finding it pays they do
make more printed forms than they
could without it.

W. Ballister Entomologist

near Gary, Indiana
About 1/2 hr from Chicago
(E of Chicago) parts of were
composed of beautiful fine
sand (like Abund beach).
most of it like links
but here & there clumps of ^{live}
trees (some dead) & scattered
individuals. So onto like
country. Edge after sand dunes,
Very few conifers here.

According to Prof Chamberlain
there have been beauty competitions
for the past 5 years & only once has
the winner had bobbed hair. The
rule has been that girls without
bobbed hair have a better chance.
A boyish bob has no chance. The 1
girl with bobbed hair that won, had
her hair so done that one could
scarcely tell it was bobbed.
Impossible to tell from front view

3 blocks from E & NW,
take train to R - South
to University Avenue

X

Send Prof Chamberlain
Sphagnum in fruit
very young if possible
Preserved.

Saturday

All round Carroll, Iowa, the
country is good agric, rolling plain
with tendency to erode where
~~not overgrown~~ mostly corn crop
Soil light, sandy with a little
clay. Tree Cottonwood & Willow.

Near Arion (Iowa) Hemp
(Cannabis) is wild in large
patches, along with Helianthus
Cannabis is like young
Larch plantations

Missouri valley very flat
of same light sandy clay. Corn
is chief crop all through here

Scarcely any forest, just a few small areas of Poplar & apparently Hawthorn & small trees or large shrubs + Willow like *S. lasiantha* long leaved & furrowed bark

Boat course at Omaha
Missouri River divides Council Bluffs from Omaha. River is very muddy, wide apparently shallow valley very flat, not much above the river.

Omaha is quite a large city numerous tall chimneys smoking, evidently some industries, Corn products Corn derivatives, on one sign West of Omaha enormous flat plains of corn (*Zea mays*) a fairly good dirt road parallels the railway for a long distance East & West of Omaha

Ellsworth Nursery at
Grand Island. Cannas are
luxuriant & strong in this
light sandy silt like banks
of Rasoer.

There is also a large cemetery
here, many tombstones look new.
Towards the Western part of
Nebraska State country is
still very flat. Can see for
many miles. Crops are
alfalfa, mangles, a little
corn, & hay. Evidently a
stock raising country.
Several small stockyards
along railway

Wyoming is all desert
very sandy, sage brush &
"greasewood" (*Chrysothamnus*)
dominant. Plant like
blossoms very abundant in
places along the railway

Country resembles
Ashcroft & Rattlesnake Mts
Region, occasionally like
Lamloops, rarely any
water & such as appears
must be alkaline, as
alkali is seen where
water has evaporated.

Evidently sedimentary
formation, weathering into
a stiff sandy clay.

No trees of any kind
at Rock Springs (Photo) there
is quite a large settlement
or small city, stores, hotel
lawns in front of home &
about 20 or 30 streets. Much
coal in evidence.

North west of Granger the vegd.
changes suddenly. It is now
more range like. with tall

white leaved shrubs like
Elaeagnus but with red berries
like Ribes cereum. Many of these
shrubs are dead & their white
bleached branches stand out
conspicuously like skeletons
Some cultivated fodder plots
now appear, and one or two
small farm houses. Some cattle
& a few horses. A few trees like
Pop trem. & some shrubby long leaved
Willows are found in most
places, also cattails. Water, in
pools by track, the color of powens
N. West of Fossil a few meadows
are seen in gulleys on distant
bench slopes. First in Wyoming
Towards the western border
of Wyoming a flock of perhaps
50-100 sheep were grazing on
fenced land.
Alfalfa & hay begins to show

just a little within the
Western boundary Wyoming
is irrigated & apparently
raising grain hay crops
for winter feeding. The
adjoining range lands are
very scrubby, deeply undulating
tufts of sage brush large
areas of bare sandy clay
eastern part of Idaho
similar to Wyoming. Very
like Spencer Ridge at Nicola
The valley (Bear River) soon
becomes wooded with + scrubby
deciduous trees & shrubs somewhat
like the flats around Vedder Crossing
Parts is like the Fraser Valley of
Chilliwack, flat open with
foothills or mountains away
in distance.

Agricultural ants very
common in Idaho
hundreds of their homes
are found on margin between
RR track & highway, in the
vicinity of Blaser &
Lava Hot Springs.

About 3-4 feet in dia
aced between Pocatello & Bannock



Clematis ligusticifolia
n^r. Pocatello common
rambling over shrubs by
RR. (in fruit)

5. Western part of Oregon
rolling undulating hills
with sagebrush & Bunch
grass & *Chrysothamnus*
In some places the
latter dominant
at Baker sheep raising
is evident

West of La Grande (Ore)
we come into Larch + ^{fir} Pinus +
~~ponderosa~~ & *Pseudotsuga*
soil like Skoonkon nr
Arthur seat; small angular
rocks & ~~silt~~ silt
Dwarf *Symphoricarpos* in fruit
Pachystima (dwarf) *Isuga mertensii*?
Picea, mullein common weed.
Pentstemon confertus, *Pinus contorta*
Car loads of tops of Yellow Pine
at Meacham (Oreg). Large clumps
of *beanothus velutinus*.
Populus sitchensis? common

W. Heron ^(see) Sambucus glauca
Arctostaphylos uva-ursi now
becoming evident

Glematis ligusticifolia ⊕
First appearance of Dracken
W. Gibbon (Ore) Rhus glabra
Near Bayuse Ore. the prairie
was cut leaving about 6 or 8
inches of stubble. gave a
curious effect to cut field

From Rieth down is like
Shompson Valley around
Shatsam. Irrigation used
W. Hinkle and enormous
stretch of flat country with
white sandy soil like the
road down from Chiefs house
to Lytter; deep loose sand
miles and miles of flat
desert, nothing seen in P. 6
like it, at least 18 miles
across & possibly as much or more
on ~~each~~ side of the railway

Desert straight from Pinkle -
Messner not a tree in
sight. West Messner
scattered clumps of trees
appear & young shade
are planted along highway
for a short distance. Look like
walnuts

Then from 160 miles past to 152
& farther the desert reappears

Columbia now parallel
water seems clear not
turbid like Fraser about
the size of Thompson at
Shenice's Bridge or Heppner

Insects. Bare treeless benches
on other side (North side)

Stiff wind blowing, Columbia is
rough, showing white caps

Apparently took a Columbia
River snap out of Green River

Snap.

Send to Dr Ostenfeld

a copy of Report with
variation of *Artemisia*
norvegica

also list of Don Gillingham's
arctic plants

1

Washington dried
Dist Col. Paper Co
Washing D.C.
Botany Drapery Felt

Andrews Cornell
working on Sphagnum

Prof O. E. Jennings
Carn. Mus. & Univ. Pittsb.
(Moses of B.S.) will identify
duplicates

See if we have
Colville's papers
on flora of Alaska

Proceeding

Hill at Berkeley
till 9th Sept
To Alex Baillie
Balfour Guthrie & Co
Seattle

12th + 13th

Victoria 14 - till 2 on 16

Vancouver 16th - evening

Thursday 6 pm
~~Wednesday~~ 16th at 8 pm

"Botanic Gardens & their
functions" ^{which appeared} _{ref to RB.G. Nov.}

30-40 slides

From Hotel Theresa
Tube on corner
125 St + W125
Lenox ave
West 125 Lenox Av

Hill to visit Point Grey
Co. Granger
about 16th Sept

1/0 Dean Merrill
College of Agr
Berkeley
Sept 9th Left California

Dr. A. W. Hill C.M.G., F.R.S.
Director
Royal Botanic Gardens
Kew
England

~~Thyme~~
Times S
Herald Square Hotel
34th (North of Depot)
W. of Broadway

Joseph Traver
3624 E. 106 St
Cleveland Ohio
To send seeds of white
variegated Euphorbia
send Cassara Bulletin to Joe

From Central Station

1 block from station

$1\frac{1}{2}$ East to 3rd Av

take 3rd av Elevated to
Botanical Garden,

Termines (Bronx Pk)

go also in " "

from 42nd St Lexington
subway train 180th

Bronx Pk " → Sth corner
of

Granger Sey 1411
1386 Nicola St.

Pullman Conductor Portland ^{Pa}
Train 17

B. A. LONNGREN.

CHICAGO ~~NORTH~~

Pullman Company
Chicago

1

Itinerary to NY
- Aug 1926 -

Leave Van. on "Trans-Canada"
(Patricia N^o 98) 6.30 Thurs 12th
arrive Toronto Mon 16th 8.45

Leave Toronto (CPR) ^(N^o 2) 9.15^{am}

Arrive Buffalo " " 12.20^{pm}
(On Michigan Central Depot)

Change to Lehigh Valley Depot

Leave Buffalo (" ") 4pm
by Lehigh Valley line

Arrive Ithaca 8.15 pm

Ithaca to N.Y. trip

Leave Ithaca 11.57 pm Sun

Arr N.Y. 8.27^{am} Mon

Mon. at N.Y. Bot Gard

Tues " " Mus. NAT HIST

Wed Leave N.Y. Morning by boat 9 am ST

or " " 2pm by train ST

Albany 6.15 pm (S.T. E. Time)

Thurs Arrive Cleveland 7 am

Leave " 11.30 pm

Friday Arrive CHICAGO 7.40^{am} ¹⁵

27 Leave " 10.15^{pm}

28 Indian Iowa
Sat Omaha (Ieb. - to
Cheyenne (Wyoming))

29 Sunday Through Wyo. Idaho
to Orchard & Boise

30 Mon Boise through Idaho
& Oregon to Portland

arrive 6.15 pm

leave 11.30 pm

Tues Arrive Seattle

31 6.45 am

Wed 1st Sept

arrive Vancouver

Prof H.H. Whetzel
Cornell University
Ithaca NY

Lehigh Upper 3. (10)

Chic + Nor West Station
Madison + N. Canal St

Return in from Umdy CA
take Blvd train to R. 1

Day 1

10462 Edw Beechok 23726

Lower 1 Car U29
Portland - Seattle.
Wichita Track 4
leave 11.15

leave 5^{pm} arr 10.45