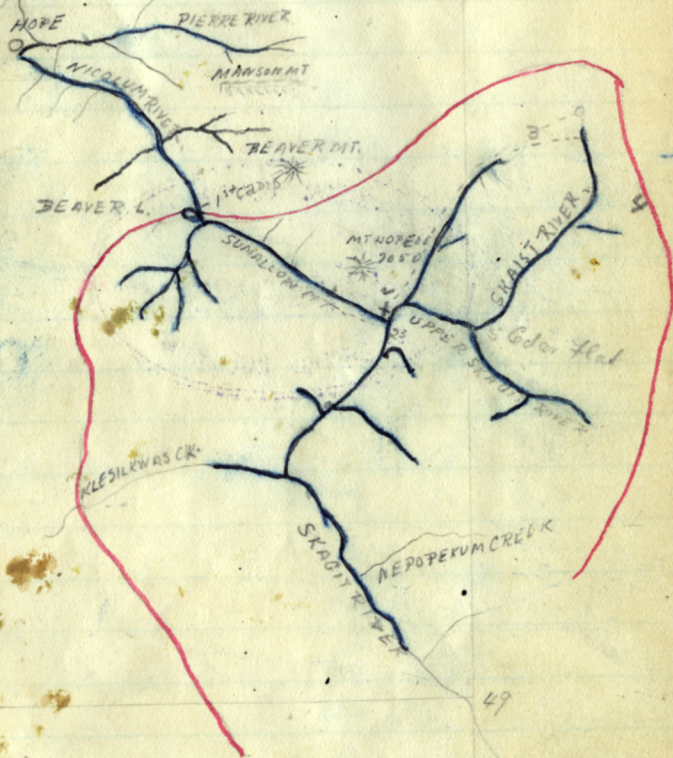




SCALE 74 = 1 1/2 INCHES  
Skagit Trip (1)  
July 1915



SKETCH MAP OF BOTANICAL EXPLORATION.  
JULY 1915.

Barometric Reading 1350.  
Hole altitude 209.  
1141

(3)  
Sunday 4<sup>th</sup> July altitude 1350 10-15 AM

Boquabadah flat

- |                                    |  |
|------------------------------------|--|
| * <i>Populus mondfolia</i> .       | <i>Cornus Nuttallii</i>                            |
| <i>Rhus typhina</i>                | <i>Galium triflorum</i>                            |
| <i>Asarum caudatum</i>             | <i>Urtica canadensis</i>                           |
| <i>Trientalis latifolia</i> .      | <i>Thuya flexata</i><br><small>Nuttalliana</small> |
| <i>Achillea triphylla</i>          | <i>Chamaecrista</i>                                |
| <i>Circaea pacifica</i>            | <i>Inula ovatum</i> .                              |
| <i>Decentia formosa</i> .          | <i>Prenanthes alata</i> .                          |
| <i>Symphoricarpos racemosus</i> .  | <i>Peg. flens dyotens</i>                          |
| <i>Acer macrophyllum</i>           | <i>Corylus rostrata</i>                            |
| <i>Acer circinatum</i>             | <i>Thalictrum occidentale</i>                      |
| <i>Pseudotsuga Douglasii</i>       | <i>Actaea spicata arguta</i>                       |
| <i>Streptopus amplexifolius</i>    | <i>Claytonia alba</i>                              |
| <i>Botrychium</i>                  | <i>Fraxella unifoliata</i>                         |
| <i>Pedicularis Purshiana</i>       | <i>Hieracium lanatum</i>                           |
| <i>Aruncus sylvestris</i>          | <i>Peltandra palmatus</i>                          |
| <i>Eriogonum Philadelphiaeum</i> . | <i>Cornus stolonifera</i>                          |
| <i>Solmsia Menziesii</i>           | <i>Physocarpus opulifolius</i>                     |
| <i>Rubus lacustris</i> ?           | <i>Sambucus</i> .                                  |
| " <i>divaricatum</i>               | <i>Botrychium ternatum</i>                         |
|                                    | " <i>virginicum</i>                                |

(4)

*Habenaria rotundifolia*

Pondal Falls

*Rhegoptera polypodoides*

*Saxifraga* ~~*repens*~~ *punctata*

120 P.M. 6 mile bridge

Aneroid 1950.

*Alnus oregona*, *Acer circinatum*

*Pseudotsuga*, *Thuja*, *Ribes gracilissimum*

*Ribes spectabile*

lean rock

*Spirea menziesii*

*Cryptogramma acrostichoides*

*Heuchera micrantha*

4:35 P.M.

Aneroid 2825 ft.

*Macrophyllum*

*Polygonum*, *C. ralsugosum*

5:10 P.M. 3300 ft

*Potentilla flabellofolia*

Summit Lake 5:35 P.M.

Aneroid 3450 ft

*Spirea foetida* (on dived)

6

*Gaultheria ovalifolia*

7:35 P.M. Camp at 14 mile trail

Aneroid 3500

*diffusus*

*Collinsia parviflora*, *Pentstemon* ~~*occidentalis*~~?

*Rufus polysepalum*, *Amica ampliflexa*?

*Habenaria dilatata*, *Potentilla* <sup>*tennesseensis*</sup> ~~*flugh.*~~

*Pyrola chlorantha*

*Ranunculus cymbalaria*

5<sup>th</sup> July Start 7:20 A.M.

Aneroid 3450

*Spirea corymbosa*

*Woodsia scapularia* (Roug)

*Cryptogramma acrostichoides*

Can you verify this?  
J.D.

3350 *Amica Parryi*

*Gerardia acuta* <sup>Gooseberry</sup> black glaucous

*Abies grandis*, *Carduus edulis*

*Arabis tenifolia*, *Ribes lacustre*

*Eriogonum*, *Ribes melanoc.*

*Tolmiea menziesii*, *Pentstemon* <sup>*diffusus*</sup>

*Silene*, *Stenactium*, *Silene menziesii*

*Sedum divergens*  
*Sasaparilla bronchialis*  
*Penstemon menziesii*  
*Lycopus arnot.*

Skagit

white *Theracium* sp.

*Rosa gymnocarpa*  
*Rubus nutkanus*  
*Aquilegia formosa*  
*Verbena pauciflora*  
*Cornus stolonifera*  
*Perkeltia ~~diffusa~~ diffusa*  
*Polypodium vulgare*  
*Lilium columbianum*  
*Cypripedium glaucum*  
*Pyrola secunda*  
*Trientalis latifolia*  
*Lilium grand*  
*Phacelia coronata*  
*Asarum canadense*  
11.15 3250  
*Parnassia fimbriata*

Mosses unflora

Lunch 2 miles  
Large *Thysa* 10 ft diameter  
*Berberis aquifolium*  
*nerosa.*

*Pinus monticola*  
*Sperdia corymbosa*  
*Arcece latifolia*

2.30 P.M. Rhododendron patch

around 3400 ft.

Associated with *Chamaephila umbellata*  
*Pinus contorta* *Pinus monticola*  
*Pseudotsuga Douglasii* *Abies grandis?*  
*Gaultheria ovalifolia* *Linnaea borealis*  
*Floris aquilina* *Picea sitchensis*  
*Straea corymbosa* *Populus trichocarpa*  
*Juniperus communis montana*

37.00  
27.41  
28

Sail Parting 2600

5.30 P.M. at camp 3700 13 miles

*Pedicularis bracteosa*  
*Thalictrum* *Psoraleum*

Tuesday 6<sup>th</sup> 3600 ft  
Day wet Mist beginning clear  
@ 9:30 AM

- Geum macro.
- Tellima grandiflora
- As. aculeus var. aler
- Anuncius sylvestris
- Amibacura racemosa
- Circaea hirsuta
- Alnus rubra
- Corylus uniflora
- Rubus sedatus
- ruthenicus
- spectabilis
- Claytonia sibirica
- " perfoliata
- Jardron vunde
- Stellaria crista
- Polygonum minus
- Juncus
- Sambucus

- Acer glabrum
- Epilobium angustifolium
- Ribes lacustris
- Artemisia ~~franciscana~~
- Thalictrum
- Thuja. Picea Chamasyana
- Polygonum angustifolium
- Bry. Hymenophyllum
- Agrostis columbiana
- Castilleja miniata
- Pentstemon ovatus
- Cnicus edulis
- Elymus glaucus? Agropyron
- Sonchus triangularis
- Radiolium racemosa
- Oxyria digyna
- Phlox affinis
- Saxifraga cucurbit
- Lilium columbianum pauciflorum
- Menisium glabellum
- 11:40 AM 4925 alt

Polystichum conditum  
 Sasifraga bronchialis  
 Epilobium alpinum  
 Pachelia arcuata  
 Mimulus Leivisei  
 Pedicularis bracteata  
 Mitella trifida  
 Arenaria petala <sup>sanctae</sup> <sup>caerulea</sup> <sup>calyp</sup>

Cant 1 PM

5450      4460

Viola glabella

Phlox Douglasii  
 Phacelia curvata  
 Arenaria (petals = sepals)  
 Pentstemon (caeruleus <sup>hutchellianus</sup> <sup>leucostemus</sup>)  
~~Erigeron~~ atropurpureus  
 Leptandrea  
 Pachystima  
 Sedum divergens  
 Valeriana sitchensis  
 Polystichum conditum  
Ribes lacustre

Mitella trifida  
 Liliium columbianum  
 Thalictrum  
 Onoclea edulis  
 Hydrophyllum  
Viola glabella 5,700  
 Lunia hypoleuca 4,850

3.30 PM. 5h Fredp 5875

1141

4.734

Lonicera involucrata

5845

990

4885

5450

top of ridge to east

Rain nearly all day

- Camp 5:25 P.M. (mileage 8 miles)
- Tofieldia ~~glutinosa~~ glutinosa
- E. sabuginosus
- Kalmia microphylla
- Lidum
- Caetha lictorhala
- Veratrum viride
- Purple Loosewort long beaked
- Agrostis humilis
- Frontalis arctica
- Rubus pedalis

wednesday

7<sup>th</sup> July 6:30 P.M.

Altitude 5800 ft. Tulameen Valley

- Day fine night cold
- Frosty ice found
- Stephanomeria bicolor
- Phlox
- Lupinus Gambodi
- Lupinus
- Potentilla flabell.
- Pentstemon
- Agrostis stricta

- Lectera cordata
- Lycopodium annotinum
- Erythronium
- Caetha
- Lonicera virens
- Pyrola rotundifolia
- Mullein testar dro
- Parnassia
- Polygonum viviparum
- Rubus pedalis

Tulameen Valley

- Mullein
- Potentilla flabell.
- Chamaenerion
- Pedicularis (red)
- Arnica cordifolia
- Pyrola rotundifolia ? ?
- Pyrola secunda
- Pyrola glabell.
- Pentstemon
- Veratrum obscurum

- Antennaria
- Lupinus
- A. Howardii

Dry arid section

Trees nearly all Pinus contorta

Vaccinium myrsillus macrophyllum

Spiraea pectinata

Abies douglasii

Penstemon confertus

"

" var. caeruleus

Achillea

Lupinus

Cassia minorata

Foucaea involucreata

Potentilla flabell.

Arenaria capillaris

Ribes Howellii

Epilobium argus

Eriogon salsug.

Erythronium flaviflorum

Amica cordifolia

Aquilegia

Antennaria rosea

Pyrus occidentalis

Sedum spectabile

Quide  
Julameen  
St. Skait  
Valley

Jula adunca 8 Mt.

Subaltes procumbens

Tofieldia glutinosa

Pyrus occidentalis

" sambucifolia

Saxifraga Bonjardi

Rhododendron albiflorum

Arenaria latiflora?

Lilium colum.

Hieracium albiflorum

Ribes Hudsonianum?

Vaccinium ovaliflorum

120 6400 ft.

2.55 PM. Lunch near Summit

altitude 7100.

Pedicularis

Arenaria capillaris

Bryarthes entelmeformis

Antennaria coronata

Cassiope pallida

Lupinus

Quide  
Julameen  
St. Skait  
Valley



Divide between Sko<sup>ist</sup> ~~and~~ ~~Rock~~  
 Leparkenna.

Berocio triangularis

Polygonum alpinum

Castilleja pallida

Habenaria leucostachys

Potentilla flabellifolia

Abies sp.

Parnassia palustris

Veronica aspera

Erythronium flaviflorum

Lupinus gambali

Veratrum viride

Anemone occidentalis

Aquilegia columbiana

Epilobium alpinum

Arnica aspera

Phlox Douglasii

E. angust

E. latifolium

Arnica latifolia

Valeriana sitchensis

Pyrus ?

Pedicularis

5.25 P.M.

Cant  
 Juncus columbianus

7400 alt Engelm aureus

Thursday 8<sup>th</sup> 2.45 AM.

Showery in morning, otherwise

going to be rainy day. Got

down Skagit Valley

6825 altitude (Slope of Skagit)

Trifida infida

Lupinus gambali. Castilleja miniata

Arnica aspera. Berberis bicolor

" Purpurea. Ribes Douglasii

Phlox Douglasii. ~~Rumex~~ ~~acetosella~~

Anaphalis. Ribes lacustris

Thalictrum. Ribes Hudsonianum

Barum ? parviflorum. Lonicera involucrata

Claytonia ~~latifolia~~. Polygonum alpinum

Collinsia parviflora. Epilobium "

Rubus nutkanus. Riza Engelmiana

Gilia minutiflora. Trifida perlandia

Parnassia. Thalictrum

Trifida glutinosa, Sedum serotinum

- Carduus edulis*
- Arnica latifolia*
- Troscum glaucum*
- Agrostis columbiana*
- Galenaria pubescens*
- Oachysima myosoides*
- Amelanchier*
- Spiraea corymbosa*
- Antennaria Howellii*
- Pyrus glossus*
- Lilium columbianum*
- Pedicularis - not backland specimens*
- Antennaria racosa*
- Pyrola secunda*
- Prunella*
- Alnus sitchouensis*
- Pseudotsuga Douglasii*
- C. Centaurea multifida*
- Phacelia anemaloidea*
- Hieracium albidiflorum*
- Pentstemon Henryi* (very glaucous)

6460  
 800  
 5470

- C. latifolium*
- Stenanthemum*
- Diablenaria leucodachy*
- Erigeron puberulus*
- Aster foliaceus*
- Juniperus communis montana*
- Rosa big. flor.
- Rhododendron alpinum
- Aruncus sylvestris
- Arnica montana
- Lonicera glaucocarpa*
- Menziesia glabella*
- Tellima grandiflora*

Lunch time 1:15 PM. altitude 5000 ft. distance covered 7 miles.

- Ceanothus velutinus*
- Potentilla gracilis*
- Potentilla glandulosa*
- Abies.
- Cornus suecica*
- Ligularia ferox*

Pibes Huvellu  
Menacua aelli  
Salix sps?  
Populus trichocarpa  
" tremuloides  
C. ham acutans  
Lobelia  
Pyrus  
Picea  
Clintonia  
Arnica Parryi  
Rosa procarrata  
Agrostis  
Luna  
N

Friday <sup>9<sup>th</sup></sup> 10<sup>th</sup> July 3500 ft  
Day bright Cave Godar Mats  
at 8.30 AM

Shepherdia - fl. light  
Ruellia sp  
P. imbricata  
Berberis halmata  
C. h. afflu  
~~V. ...~~  
Lauertina ovalifolia  
Goodyera  
Clintonia  
Ror. cren  
Pysola Secunda  
Ruellia ruth.  
Paehystin  
Alnus sitchensis  
Mentzelia  
Lonicera ciliosa  
Pysola elongata  
Arctostaphylos Uou Uou

*Strobiliscus*  
*Vaccinium macrophyllum*  
*Amelanchier*  
*Acer glabrum*  
*Taxus*  
*Fraxinus cuneata*  
*Salix purpurea*  
*Aruncus*  
*Claytonia virginica*  
*Pinus monticola*  
*Arenaria*  
*Rhododendron*  
*Alopecurus*  
*Potentilla fruticosa*  
*Spiraea corymbosa*  
*Scirpus setigerus*  
*Galium*  
*Lilium*  
*Amorhoga nudicaulis*  
*Mosses*  
*Antennaria racemosa*

*Smilacina racemosa*  
 Camp on grassy spot  
 5625 ft. East summit  
~~Strong fog~~

<sup>10</sup>  
~~10th~~ Saturday

Showery bright intervals  
*Fragaria*, (gravelly soil)  
*Vaccinium myrtillus macrophyllum*  
*Eriogonum umbellatum*  
*Scirpus*, *Achillea*, *Pentstemon*  
*caeruleus* *purpureus*  
 Slab consisting of Pine cottonwood  
 + ~~Plum~~ Cedar  
 others used associated  
 Gravel bed beneath  
 & Labrador  
*Eriogonum* *optatum* *Salix*  
*Juncus* *setchensis*  
*Lupinus*  
*Rhodiola* *Pentstemon*  
*circumata* *mongolicus*  
 5575' altitude

Lightning Lake. 4 P.M.  
altitude 5325.

Stop at Trappers cabin.  
*Chenopodium capitatum*.

Night freezing cold

10<sup>th</sup> Sunday 9:30 Start from Gordon's  
cabin End way, had to retrace

steps, way along side Lightning  
Lakes 7 in a chain, the mt over hills <sup>instead</sup> <sub>stopping here</sub>

along ridge with vegetation similar  
to Black Truck Slates. Stop made  
near <sup>mowitch</sup> mowitch camp. altitude <sup>7050 ft.</sup> near  
giving a good view of mt. Hoaman

This is the furthest south point  
of journey. Vegetal Grass chiefly.

Abies Canadensis. Night not so cold  
as previous but showing

12<sup>th</sup> Monday Hills covered with mist. Rain  
with gaily wind

7200

5325  
1141  
4184

Slates on way to ranch

Luna *Sedum div*

*Erigeron* *Balsamor*

*Castilleja* *Antenn. monst*

*Lewisia* *Amyca Pange*

*Arenaria* *Antenn. racemosa*

*Engelmannia* *Ribes Hudson*

*Sasaparilla* *bractea*

*Pedicularis* *Potentilla fruticosa*

*Erigeron* *Amelander*

*Silene* *Urea americana*

*Lupinus*

*Fragaria*

*Silene*

Evening spent at Whitworth's Ranch

13 Tuesday alt 2775

Goswick I.D. Wednesday 11<sup>th</sup> Aug

along beach	Plantago maritima
Grindelia oregana	Symphoricarpos
Berberis <sup>both</sup> <del>formosa</del>	Valerianella
Arbutus Menziesii	Aira (both)
Elytrodium album	Quercus soub.
Dactylis	Collinsia
Salicornia	Lonicera hispidula
Suaeda?	Holodiscus
Ancistrum	Arctostaphylos
Stephanandra canadensis	Gaultheria shallon
Pseudotsuga (prevailing tree)	Chamaenerion
Pachystima (not hard)	Trifolium
Allium commune	Goodenocera
Sedum spaldingii	Acer macro-
Cnicus lanceolatus	Galium triflorum
Lathyrus Mitchellii	

Thursday 12<sup>th</sup> Aug.

Mayre I.D. seeds of	Scrophularia
S. Pender I.D. "	Tasius brevifolia
Mnambium vulgare	Cnicus lanceolatus
Acer macrophyllum	Holodiscus discolor
Pseudotsuga Douglasii	Pseudotsuga Douglasii
Arbutus Menziesii	Sedum spaldingii

*Thya flicata*

Island Trees Lady's smil.

Wednesday

Oteris

Ouresae

Gaultheria

Holodiscus

Vacc. panic.

<sup>Large small leaves</sup>  
Pachystima

Thya

Arbutus

Rubus

Berberis pinnate

(Cornus blue  
glauca  
glandulosa)

Achillea

Lonicera ciliosa

Goodyera

Micranthes

Malva

Lonicera herbicola

Tr. cal. Cal.

Fedem. spathul.

Polystichum

Pseudotsuga

Rhamnus

Prunus (Corymbos)

Cornus Nuttallii

Gaultheria

Rubus aspinus

Acer macrophyllum

Shell Beach Thursday Aug.

Pseudotsuga taxifolia

Vaccinium naniflorum

Cornus Nuttallii

Trillium ovatum

Acer macrophyllum

Lianella lacanida

Thya flicata

Adiantum pedatum

Philadelphus Lewisii

Adenocaulon bulb.

Thapsus verbasicum

Amelanchier

Polystichum

Penus monticola 5

Gaultheria shallon

Arbutus

Holodiscus discolor

Lonicera ciliosa

Rubus aspinus

Goodyera

Berberis nervosa

Achlys

" aquifolia

Sonchus (involuc. galvica)

Lianella infolata

Plantago major

Lysichiton

Linnaea (nobrach)

Stellaria crispo

Montague Harbor 21 Aug. 1915

*Holodiscus discolor*

*Lonicera hispidula*

*Thuya plicata*

*Pseudotsuga Douglasii*

*Rubus ursinus*

*Symphoricarpos racemosa*

*Pteris aquilina*

*Quercus garryana*

*Acer macrophyllum*

*Cornus stolonifera* 20-30

~~base~~ *Rhamnus* <sup>30</sup> ~~30~~

*Gaultheria Shallon*

*Lysichiton kamtsch.*

*Adiantum trichyllum*

*Galium ulmifolium* 4 leaved glabrous

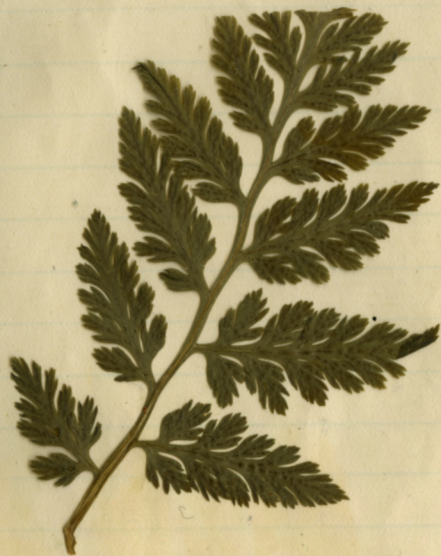
*Adiantum bicolor*

*Elymus glaucus*

*Micromeria Douglasii*

*Vaccinium harnettii*





Nicolson 9 miles 4 P.M. 4<sup>th</sup> July 1.35  
Somallov 16 " 7.55 AM 5 " 1.6

Coke.

Potatoes.

Fruit.

Soft Drinks,

Gas.