

**Frederic Wood Theatre**

**The  
Winter's  
Tale**



Costume Design  
By  
Brian H. Jackson

# A Note On The Winter's Tale

By  
Rick Williams

## The Play

The title of this play puts the audience in mind of the seasons, and the changes they reflect, thereby making humans aware of time. And time and its processes are a central concern of *The Winter's Tale*. The play begins in winter, where we immediately witness the accelerating plunge into violent extremes which is characteristic of tragedy, and also the increasing isolation of the main character. Leontes loses all sources of human contact - he becomes estranged from his wife, his life-long friend, his son, daughter, councilors, court, and even the higher powers, as represented by the oracle. Leontes's actions are unnatural and they call forth a response from the natural world: from the wild animals, the storm at sea, and a kind of permanent winter in his kingdom. And with all this comes the final realization that his own flawed behavior is the origin of all the suffering.

In the source from which Shakespeare transformed the tale, the story ends here with the king's suicide. But this is only the beginning of *The Winter's Tale*. At the end of the second act, the audience suddenly sees the action shift outside of the court and the tragedy and into the world of shepherds and country folk who are intimately connected, through their livelihoods, with the cycles of nature. A sixteen year gap in time provides a connection between the seasonal cycles and the cycle of human generations, as well as an opportunity to go through and beyond the tragic fall, and explore what happens on the other side.

## The Plot

Leontes, King of Sicilia, suspects his wife Hermione of adultery with his life-long friend Polixenes, King of Bohemia. His rage forces Polixenes to flee, Hermione to die of shame, and then he has her new-born daughter taken to a desolate coast, and left there by Antigonus, one of his lords.

The oracle of Apollo declares that Hermione is innocent, that Leontes is a jealous tyrant, and that he will die without an heir should he fail to recover "that which is lost". The oracle is confirmed by the death of Mamillius, Leontes's son. Reproached by Paulina and repenting of his obsessive jealousy, Leontes goes into mourning.

The infant daughter, Perdita, is found by the country people of Bohemia, who cherish her. As Leontes pines, Perdita grows into a beautiful and graceful woman. Florizel, son of Polixenes, falls in love with her despite her poverty and seeks to marry her without his father's knowing. When discovered by Polixenes, Florizel and Perdita flee. They reach Leontes's court, where it is discovered that the girl is the lost princess. Perdita is married to Florizel, Leontes is reconciled to Polixenes and Hermione is restored to life.

## Frederic Wood Theatre

The Winter's Tale  
March 4-14, 1987

A Publication Of

**UNIVERSITY  
PRODUCTIONS INC.**

#202 - 2182 West 12th Avenue  
Vancouver, B.C. V6K 2N4  
(604) 224-7743

Publisher  
Joseph G. MacKinnon

Director of Sales  
Doug Henderson

Attention:  
**Frederic Wood  
Theatre  
Audience**  
Come and Enjoy:

### *Music and Shakespeare*

Join UBC Faculty Members Ray Nurse and Reg Ingram to discover more about the fascinating relationship of Music and Shakespeare.

Four Monday Evenings  
March 23 - April 13

### *Page And Stage*

A Series of Seven Stimulating Lectures On The Plays Being Presented At This Year's Oregon Shakespearean Festival in Ashland

Seven Monday Evenings  
June 1 - July 13

### *Shakespearean Festival Study Tour to Ashland Oregon*

Includes Set of Seven Tickets to Plays by classical masters and modern mavericks.

July 20-26

For Information Call  
Creative Arts Program  
UBC Centre for  
Continuing Education  
222-5254



99 CHAIRS

UBC 's First  
Neighbourhood  
Pub

Friendly place to  
get together and  
relax after your  
evening at the  
theatre

Located in  
Fairview Crescent  
(Behind the 'Frat' Houses)  
OPEN 5 P.M. to Midnight

The  
FIREPLACE  
LOUNGE

At The  
Graduate Centre  
Located Right Across  
The Street From The  
Frederic Wood Theatre

"We invite you to come  
and enjoy our new  
facilities combining the  
comforts of a classy  
home with the menu of an  
English Pub !"

Mon. - Thur.  
11:30 a.m. to 11:30 p.m.  
Friday 11:30 a.m. to 1:00 a.m.

# The Winter's Tale

By William Shakespeare

Directed By Ray Michal

Set And Lighting Design By  
Robert Gardiner

Costume Design By  
Brian H. Jackson

Sound Design By  
Stephen Fearing

Choreography By  
Grace Mac Donald

Original Music Composed By  
Earle Peach and Stephen Fearing

Cast  
In Order Of Appearance

Archidamus, *a lord of Bohemia*. . . . . Jason Smith  
Camillo, *a lord of Sicilia*. . . . . Dennis Kuss  
Polixenes, *King of Bohemia*. . . . . Timothy Hyland  
Leontes, *King of Sicilia*. . . . . Lawrence Kagan-Ball  
Hermione, *Queen to Leontes*. . . . . Susan Elworthy  
Mamillius, *young Prince of Sicilia*. . . . . Ezra Cannon  
Emilia *Ladies -in-waiting to Hermione* . . . . . Janine Payne  
Bianca . . . . . Cara Tekatch  
Antigonus, *a lord of Sicilia*. . . . . Neil Gallagher  
Four lords of Sicilia . . . . . Jamie Binkley, Alan Saugstad,  
. . . . . Peter Shaver, Bryson Young  
Paulina, *wife to Antigonus*. . . . . Cynthia Ford  
Nurse. . . . . Barb Cormack  
Cleomenes *Lords of Sicilia* . . . . . Roland Brand  
Dion . . . . . John Murphy  
Mariner. . . . . Jason Smith  
Old Shepherd, *reputed father of Perdita*. . . . . Michael Fera  
Young Shepherd, *his son*. . . . . Tom Jones  
Time. . . . . Alan Saugstad  
Autolycus . . . . . Mark Weatherley  
Florizel, *son to Polixenes* . . . . . Neil Ingram  
Perdita, *daughter to Leontes*. . . . . Katey Wright  
Dorcas *two sheperdesses* . . . . . Cara Tekatch  
Mopsa . . . . . Janine Payne

Shepherds  
Jamie Binkley     John Murphy  
Roland Brand     Peter Shaver  
Alan Brodie     Bryson Young

Shepherdesses  
Barb Cormac  
Gillian Dew  
Allison Saunders

Scene: Partly in Sicilia and partly in Bohemia

There will be one 15 minute intermission

## PRODUCTION

Technical Director	Ian Pratt
Properties Mistress	Sherry Darcus Milne
Costume Supervisor	Rosemarie Heselton
Set Construction	Robert Eberle, Don Griffiths, John Henrickson
Cutters	Charlotte Burke, Jean Driscoll-Bell
First Hand	Leslie White
Seamstresses	Lori Kenney, Caferina Ofreneo, Kathleen Wright
Milliner and Costume Accessories	Pearl Bellesen
Properties Assistant	Kairiin Bright
Jewellery	Brian H. Jackson, Blanka Jurenka
Beards and Wigs	Ken Allan
Stage Manager	Cynthia Burtinshaw
Lighting Execution	Bonnie Beecher
Assistant Stage Managers	Alan Brodie, Heather Kent
Set Design Assistant	J. Cricket Price
Lighting Design Assistant	Elana Honcharuk
Sound Operator	Randall C. Plitt
House Manager	Rhiannon A. Charles
Box Office	Michael Fera, Carol Fisher, Linda Humphries
Business Manager	Marjorie Fordham
Production	Norman Young

### Acknowledgements

Inner City Recording Studio

Studio Musicians:  
Fred Cory, Stephen Fearing  
Earle Peach, Karen Oliver

Studio Engineer:  
Sid Perez

# As you like them

## Shakespeare on video

As You Like It  
Hamlet  
Henry V  
King Lear  
Julius Caesar  
MacBeth  
Midsummer Night's Dream  
Othello  
Richard III  
Romeo & Juliet  
Taming of the Shrew

at Vancouver's  
SPECIALTY video store



SALES

RENTALS

1829 West 4th Ave.  
at Burrard 734-0411

# Café MADELEINE

## Licensed Bistro

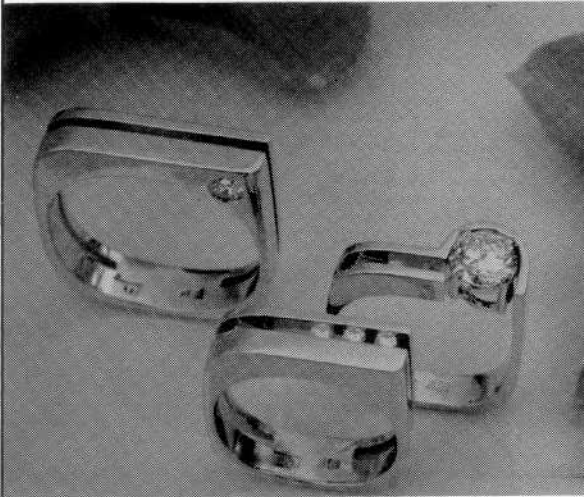
Open daily

A place of  
culinary comfort,  
serving breakfast,  
lunch and dinner.

**A Place to Remember**  
3763 West 10th Ave.  
224-5558



CATBALUE



Goldsmith

3619 w 4th Ave

**ACTORS!**

**8x10 B + W PHOTOS  
ONLY \$1.20 EACH!**

(MINIMUM ORDER 50 PRINTS)

**5 FREE 8x10's!**

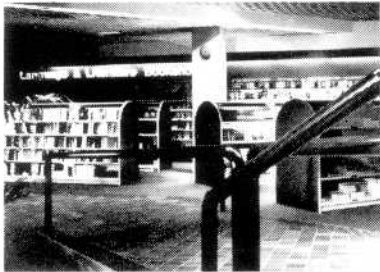
(WITH MINIMUM ORDER PLUS THIS AD)



**ACTION REPROGRAPHICS**

2166 W. 4th AVE., VANCOUVER, B.C.

**731-6313**



*Western  
Canada's  
Largest  
Bookstore*

All your book needs in seven  
bookshops under one roof!

- Professional
- Leisure Reading
- Arts & Humanities
- Language & Literature
- Social & Behavioral Sciences
- Science & Engineering
- Health Sciences

Also open Wednesday  
evening and Saturday.



**UBC BOOKSTORE**

6200 University Boulevard  
228-4741



**Quality**

(kwol•e•tee) n.

1. the degree of excellence of a thing
2. superiority
3. higher in order; status; etc.
4. above average
5. Kinko's

**kinko's**

Great copies. Great people.

5706 University  
Boulevard  
Located In The  
University  
Village

Telephone  
(604) 222-1688

# Is It Possible To Have An Oil Painting Which Doesn't Fade In Sunlight ? Yes!



1. The Old Holland Painting Masters used these colours. For example; Rubens, Vermeer, Van Gogh etc.
2. All 75 colours absolutely permanent. Only factory in the World.
3. All 75 colours made on stone equipment.
4. In the U.S. they say our colours are the King of oil colours.
5. Restoration work has been done to famous paintings in museums in Paris, Moscow, New York, and Amsterdam with Old Holland Oil Colours.
6. Fillers like chalk and aluminum hydrate are never used in Old Holland Oil Colours.
7. Only stable lead tubes with a tin cover are used, that saves the paint in the tubes for over 100 years.
8. More and far better results for the consumer or artist, because there are no fillers which means;
  - a. more covering power
  - b. more colour power
  - c. incredible colour intensity.
9. Since 1664. The oldest factory in the world and the process of manufacturing is still controlled by artists
10. Colours are more expensive but cheaper in use, because of the high concentration of Scheveningen pigments- and no fillers!
11. Queen Wilhelmina and Queen Juliana of Holland always used these colours.
12. In the World-famous Amsterdam State Academy all lessons are given with Old Holland Oil Colours.
13. Old Holland Oil Colours are still made as in the 16th Century
14. Every tube is its own colour card, because of the hand-painted strip on the outside of every tube. The colour indication does not change, like printed colour tubes do.
15. After making the paint on stone equipment, the paint can only be filled by hand into the tube and not as with industrial colours, by machine because the paste is very sticky.
16. Stone equipment gives no change to the pigments, metal equipment goes fast and gives change of colour in the pigment, especially earth colours. We use only stone equipment.
17. Old Holland colours are less transparent, because they are not combined with fillers. Fillers give the possibility to produce quick cheap paint, but the colour is not as strong as Old Holland Colours.
18. This quality can not be compared with other products with fillers.
19. Cold Pressed linseed oil is taken from only the first pressing. (just like the finest wines produced from grapes.)
20. Colours without cheap fillers weigh a lot more in your hand (not to mention the scale) than industrial made modern oil colours with fillers.

"Oudt Hollandse Olieverwen Makerij Sinds 1664"

The Gifted Canadian Artist Can Now Also Experience The Ultimate In Artist's Oil Colours, That Will Enrich Their Art Beyond What They Do Believe To Be Possible.

OILS \* EGGTEMPERA \* WATERCOLOUR \* LIQUIDS \* ARTS & CRAFTS Supplies

#115-20575 Hwy. 10 (Langley Bypass)  
Langley British Columbia, Canada  
MON - SAT 9-5, Phone (604) 534-4044



ASK FOR FREE CATALOG AND SHADECARD DEALER ENQUIRIES WELCOME



PANACHE

Indulge yourself or satisfy your gift giving needs with a visit to Panache. An extraordinary array of unique and quality merchandise from stemware, china and imported handblown vases to decorations for home or office. Panache also specializes in exquisite "pure" silver jewelry personally handcrafted by Erich Grill and available in a variety of designs. If gold or precious stones and pearls are your preference, Panache has a setting to suit every taste. You needn't look further than **Panache** at 4475 West 10th, 224-2514.

## Kozma Fashions Ltd.

EXCLUSIVE IMPORTED and  
CUSTOM MADE GOWNS



4419 West 10th Avenue  
Vancouver, B.C.  
Phone: 228-8133



Photographs: Stuart Dee

## Before and After the Show...



At the University Golf Club, we thought the "neighbourly" thing to do would be to share our sparkling new dining facilities with theatre-goers.

Come to the University Golf Club for dinner *before* the show...and with your theatre tickets you'll receive a 10% discount on dinner!

Then, *after* the show, drop by for coffee and dessert.

We're just minutes away and there's plenty of free parking.

It's the "neighbourly" thing to do...

Reservations 224-7513



5185 University Boulevard