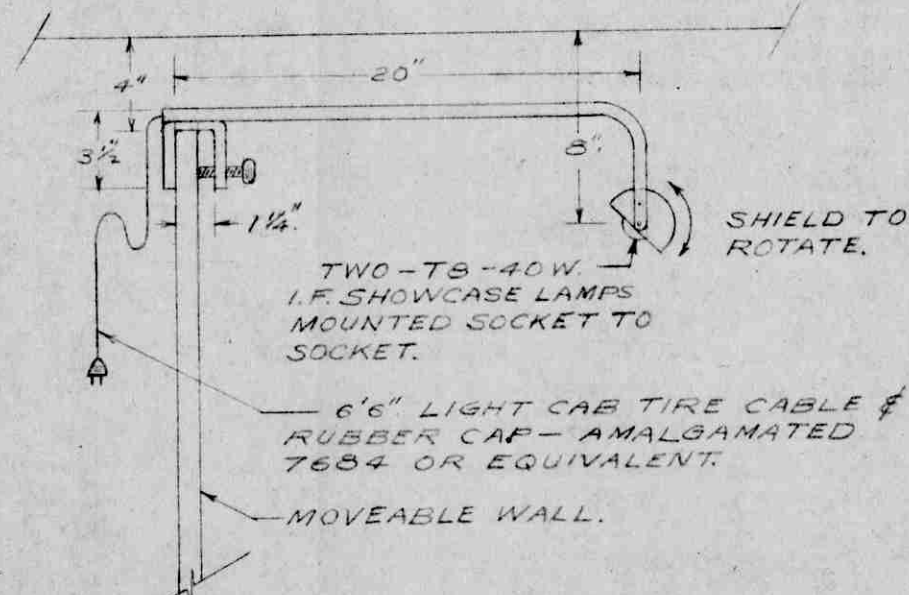
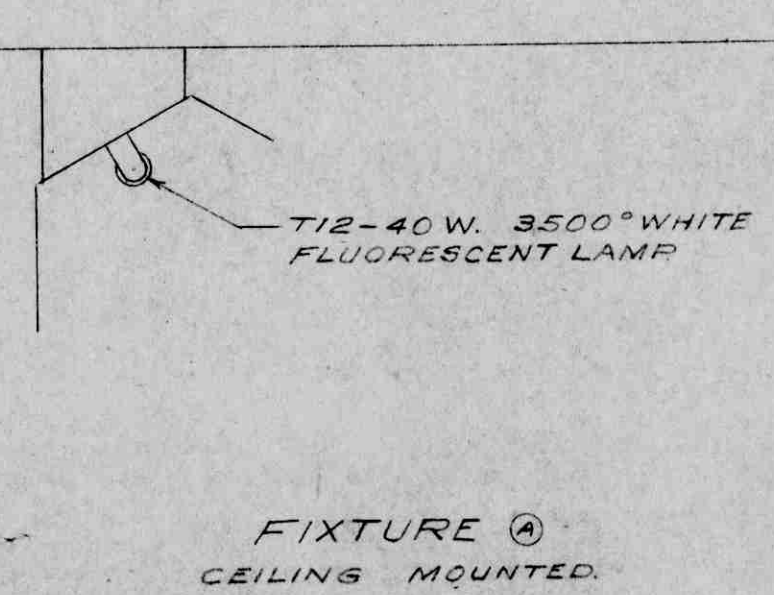
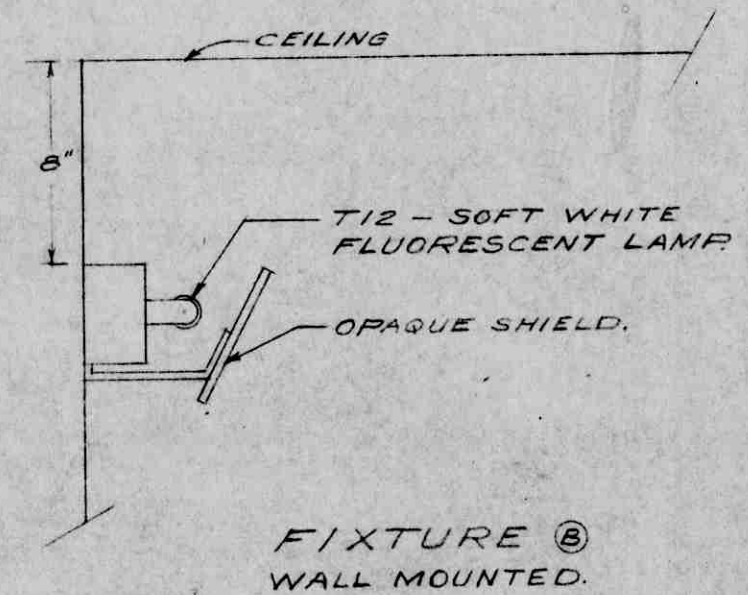


FLUORESCENT LIGHTING SCHEDULE.

FIXTURE	SECTION	NO. OF LAMPS	CIRCUIT
ⓐ	ⓐ	7	B6
ⓑ	ⓑ	6	B6
ⓒ	ⓒ	5	B6
ⓓ	ⓓ	6	B6
ⓔ	ⓔ	16	B14
ⓕ	ⓕ	7	B14
ⓖ	ⓖ	4-40 W.	B15
ⓗ	ⓗ	1-20 W.	B15
ⓓ	ⓓ	2	B15

- SYMBOL SCHEDULE.**
- ⊗ - EXISTING OUTLETS TO BE COVERED WITH BLANK COVERS.
 - ⊕ - CEILING OUTLET.
 - ⊙ - BRACKET OUTLET 10' ABOVE FLOOR.
 - ⊖ - DUPLEX OUTLET RECEPTACLE IN CEILING.
 - ⊗ - DUPLEX OUTLET RECEPTACLE IN WALL.
 - ⊙ - SWITCH.
- NOTE - RECEPTACLES AND SWITCHES TO BE INSTALLED SIMILAR TO THOSE IN THE REST OF THE BUILDING.

- CIRCUIT HOME RUNS.**
- ⓐ - 1/2" - 2 #14 - B15.
 - ⓑ - 1/2" - 5 #14 SYNTHETIC-INSULATED - B1, 2, 6.
 - ⓒ - 1/2" - 5 #14 SYNTHETIC-INSULATED - B2, 3, 14.
 - ⓓ - 1/2" - 3 #14 SYNTHETIC-INSULATED - B5, 7, 8, 11, 12, 13.
 - ⓔ - 1/2" - 3 #14 - B9, 10.
 - ⓕ - 1/2" - 2 #14 - B4.



FIXTURE C
CEILING MOUNTED.
2-50 W. LAMPS IN A CEILING RAN TYPE
FIXTURE - HYPERION T12 1/2 - 35 1/2 OR
EQUIVALENT.

FIXTURE D
WALL MOUNTED.
1-300 W. I.F. LAMP IN AN ELEPTICAL
ANGLE REFLECTOR - BENJAMIN 5537
OR EQUIVALENT. EACH FIXTURE TO BE
EQUIPPED WITH A LEVOLIERS SWITCH.

SCALE 1/8" = 1" FOR FIXTURE DETAIL

PROPOSED ART GALLERY NO. 1 STACK LEVEL UBC LIBRARY		
REVISION DATE	SHARP & THOMPSON BERWICK, PRATT ARCHITECTS VANCOUVER - B.C.	DATE MAY 8, 1948
	A EDWARD SIMPSON CONSULTING ELECTRICAL ENGINEER VANCOUVER, B. C.	SCALE 1/8" = 1" DRAWING NO. U2-5-9