

Sheet #4

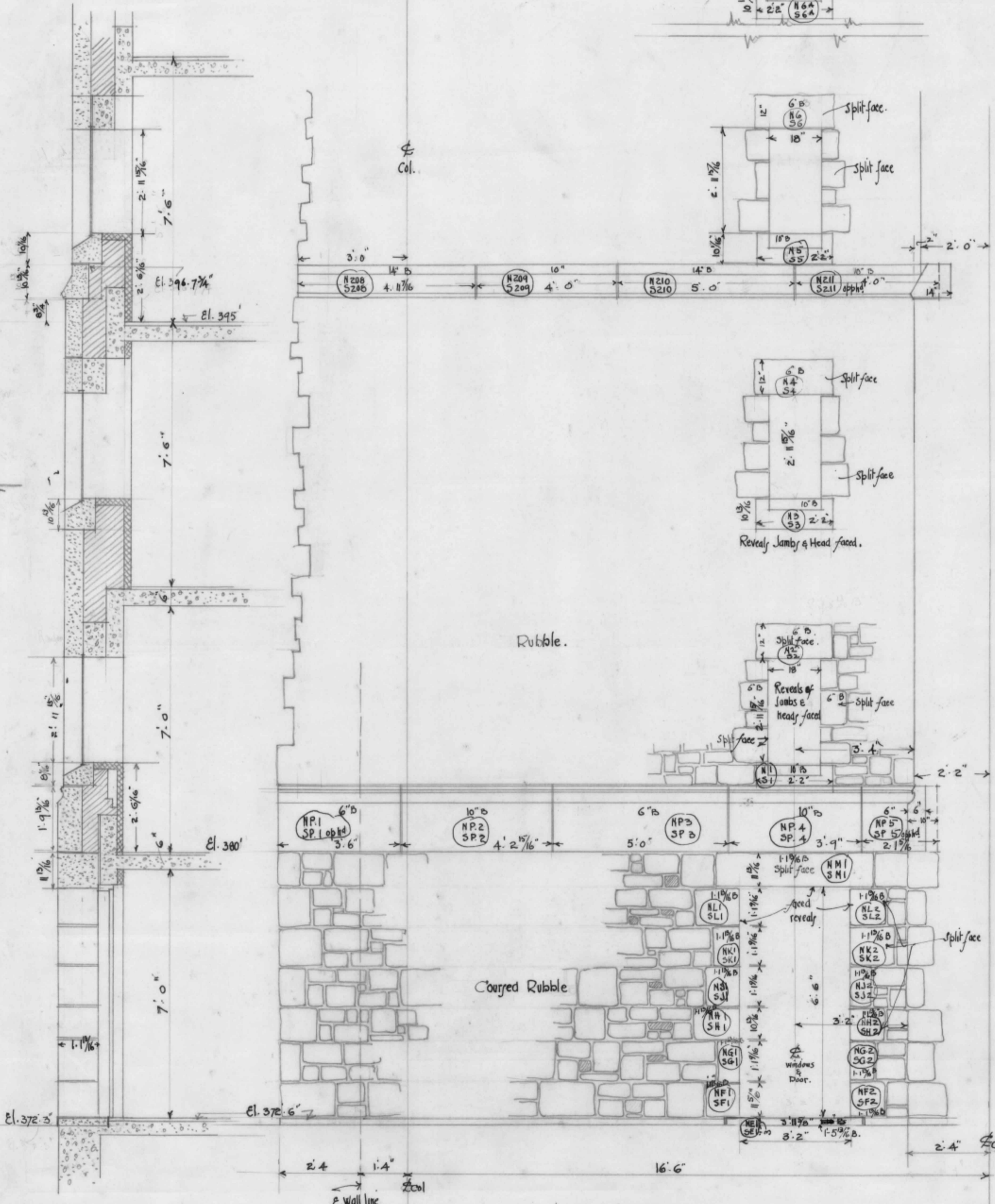
U.B.C. THE LIBRARY...

1/2 Detail of Stone to North Elevation (East End)...

South Side Duplicate...

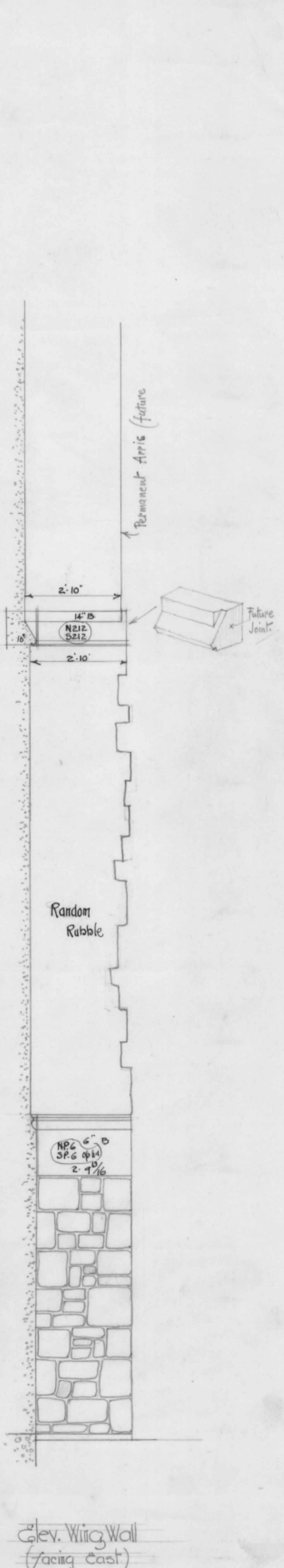
Sharp & Thompson A.R.I.B.A. Architects

June 12th 1924...



Section

Elevation



Elev. Wing Wall (Facing East)

10-22-987

10-22-987

10-22-987