

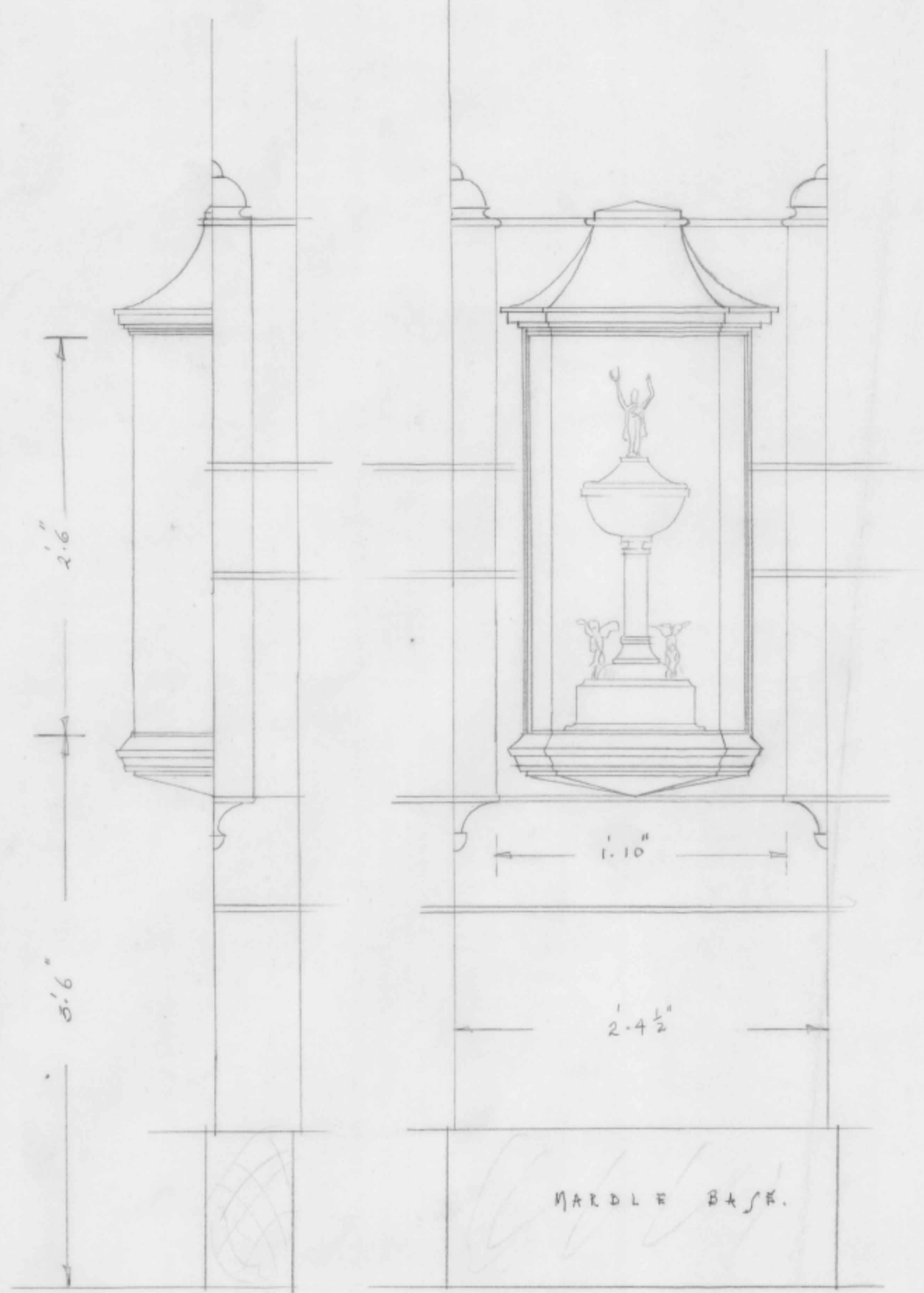
THE LIBRARY UNIVERSITY OF B.C.

PROPOSED TROPHY CASE IN MAIN ENTRANCE HALL

SCALE $1\frac{1}{2}'' = 1$ FOOT & FULL SIZE DETAILS

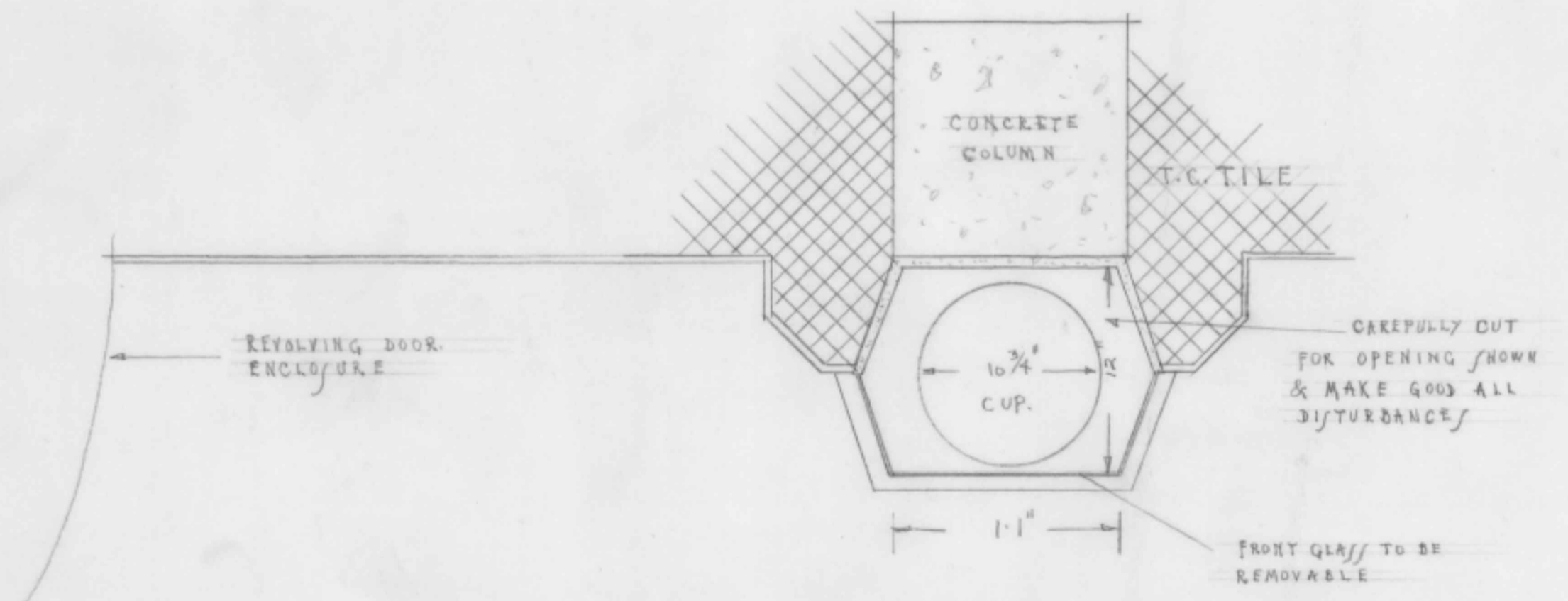
DECEMBER 1937.

SHARP & THOMPSON ARCHITECTS

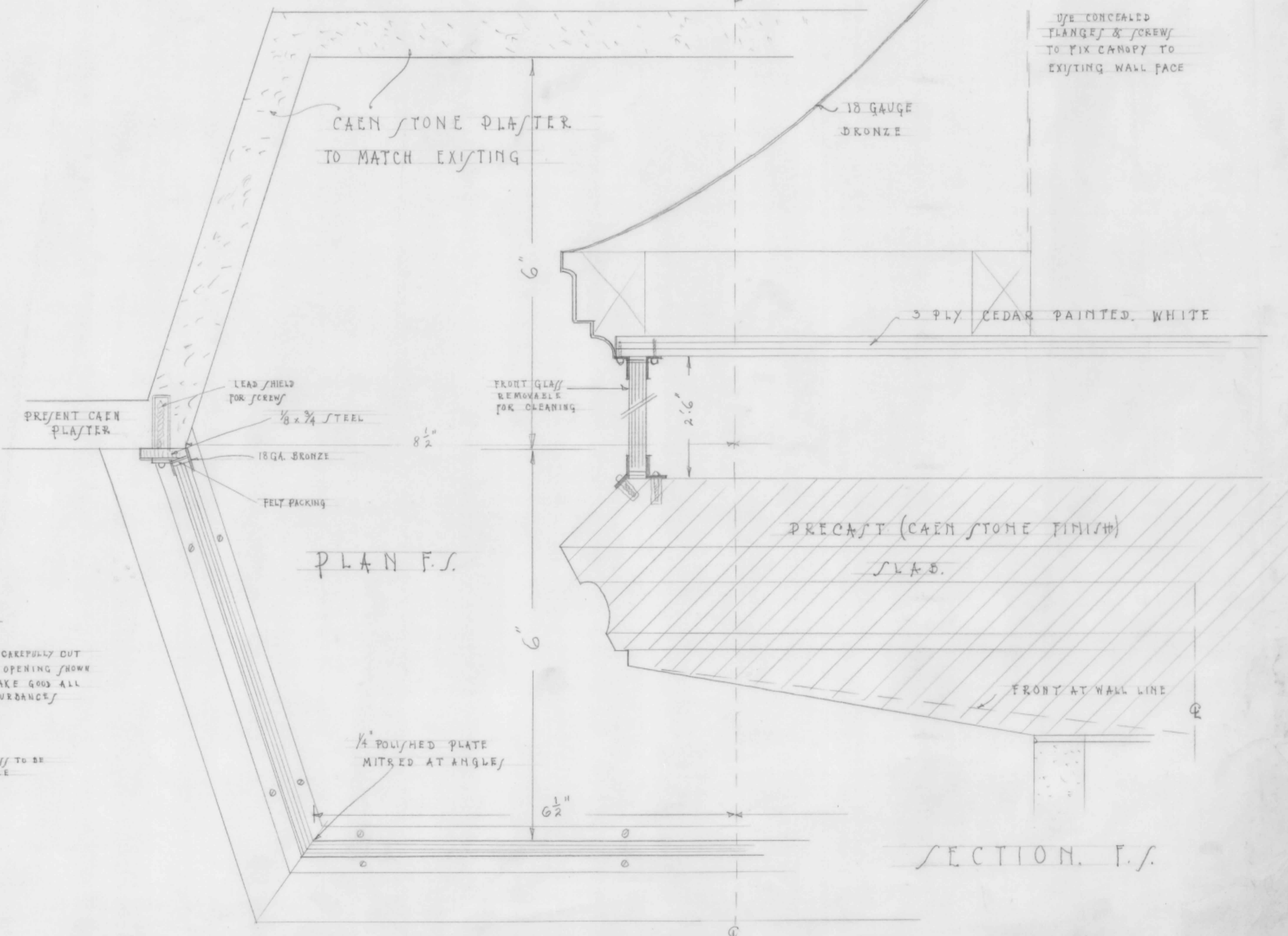


SIDE

FRONT



PLAN



PLAN F.S.

SECTION. F.S.

USE CONCEALED FLANGES & SCREWS TO FIX CANOPY TO EXISTING WALL FACE

187 95 91