

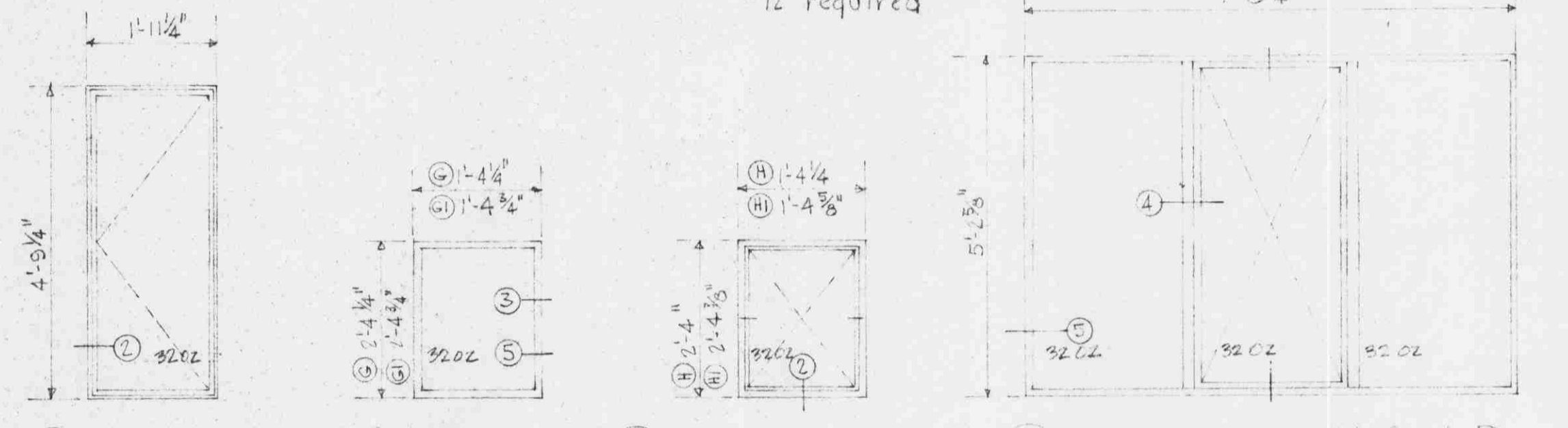
A Fixed
 (A) In Concrete 114 req'd
 (A) In Stone 12 req'd

B Horiz. Cent. Pivot
 (B) In Concrete 20 req'd
 (B) In Stone 3 req'd

C Casement
 (C) 12 required
 (C) Opposite Hand 12 required

D Fixed
 (D) 4 required

E Horiz. Cent. Pivot
 (E) 2 required

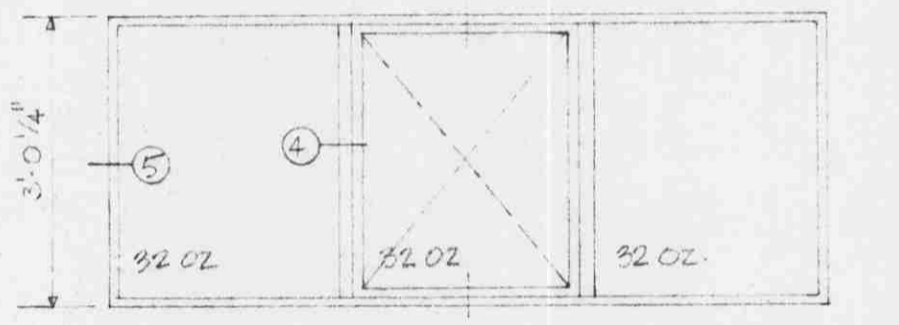


F Casement
 (F) 1 required
 (F) Opposite Hand 1 required

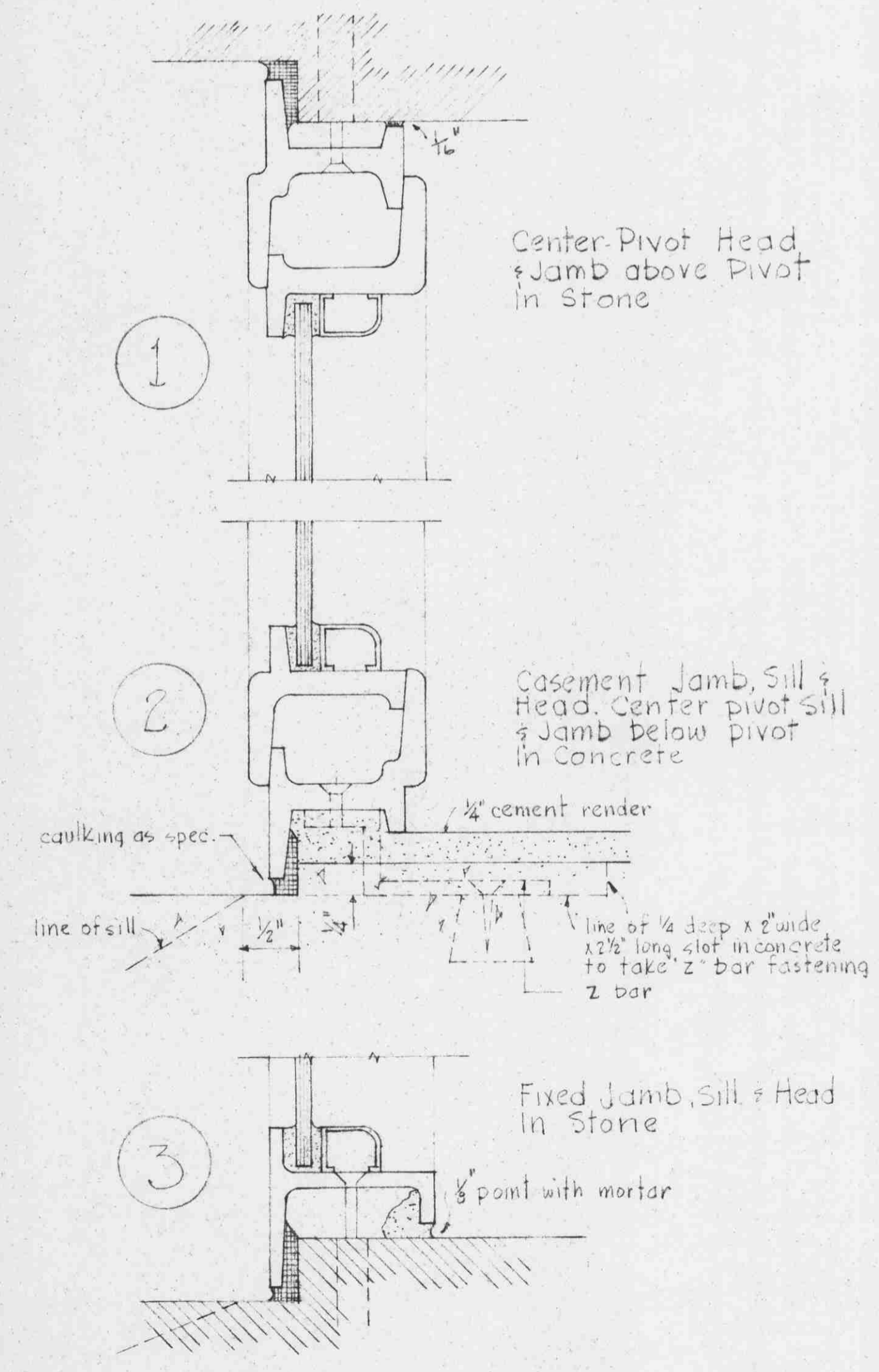
G Fixed
 (G) In Conc. 3 req'd
 (G) In Stone 3 req'd

H Horiz. Cent. Pivot
 (H) In Conc. 6 req'd
 (H) In Stone 3 req'd

I Fixed & Vertical Cent. Pivot
 (I) 133 required



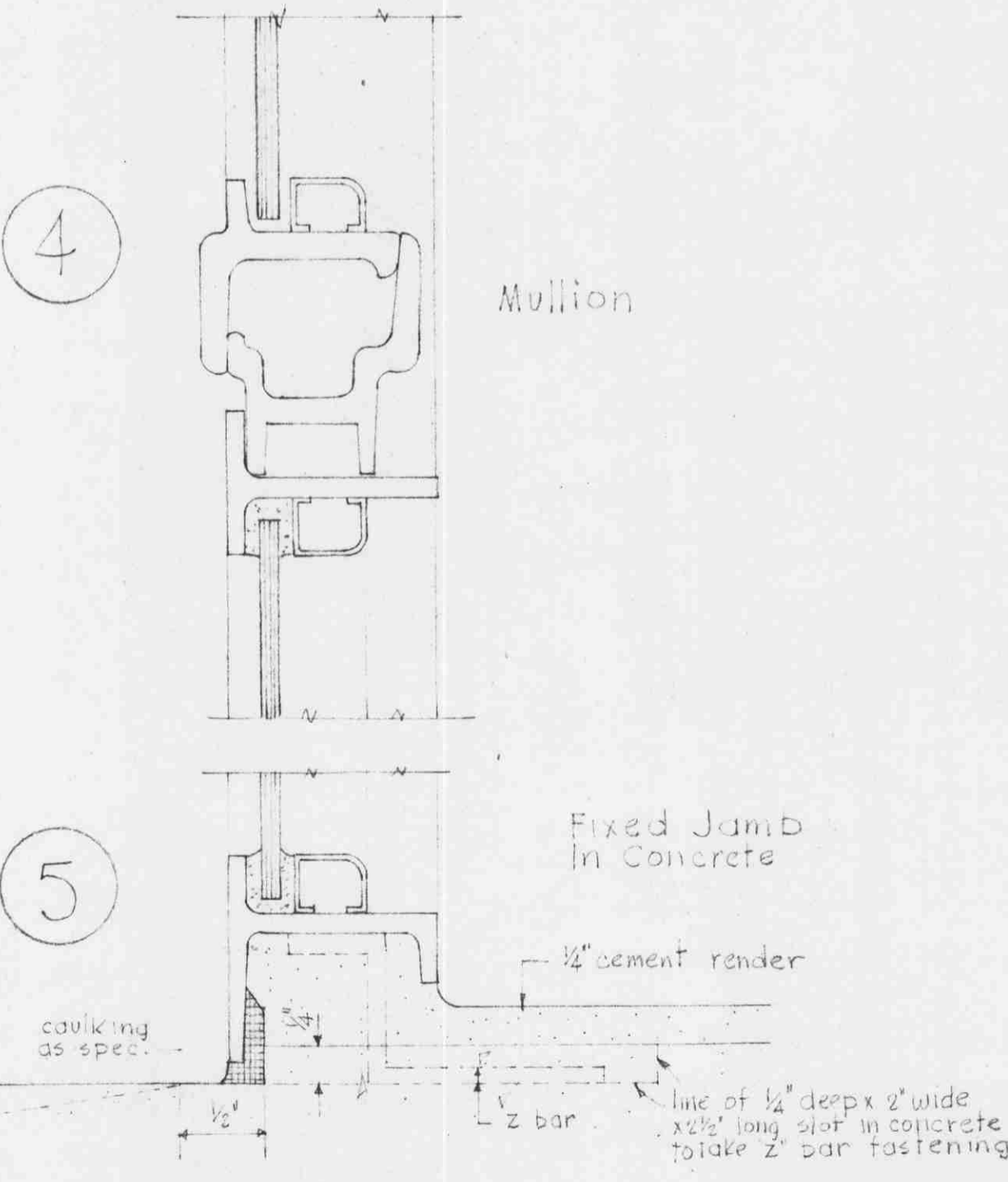
K Fixed & Vertical Cent. Pivot
 (K) 19 required



Center-Pivot Head & Jamb above Pivot in Stone

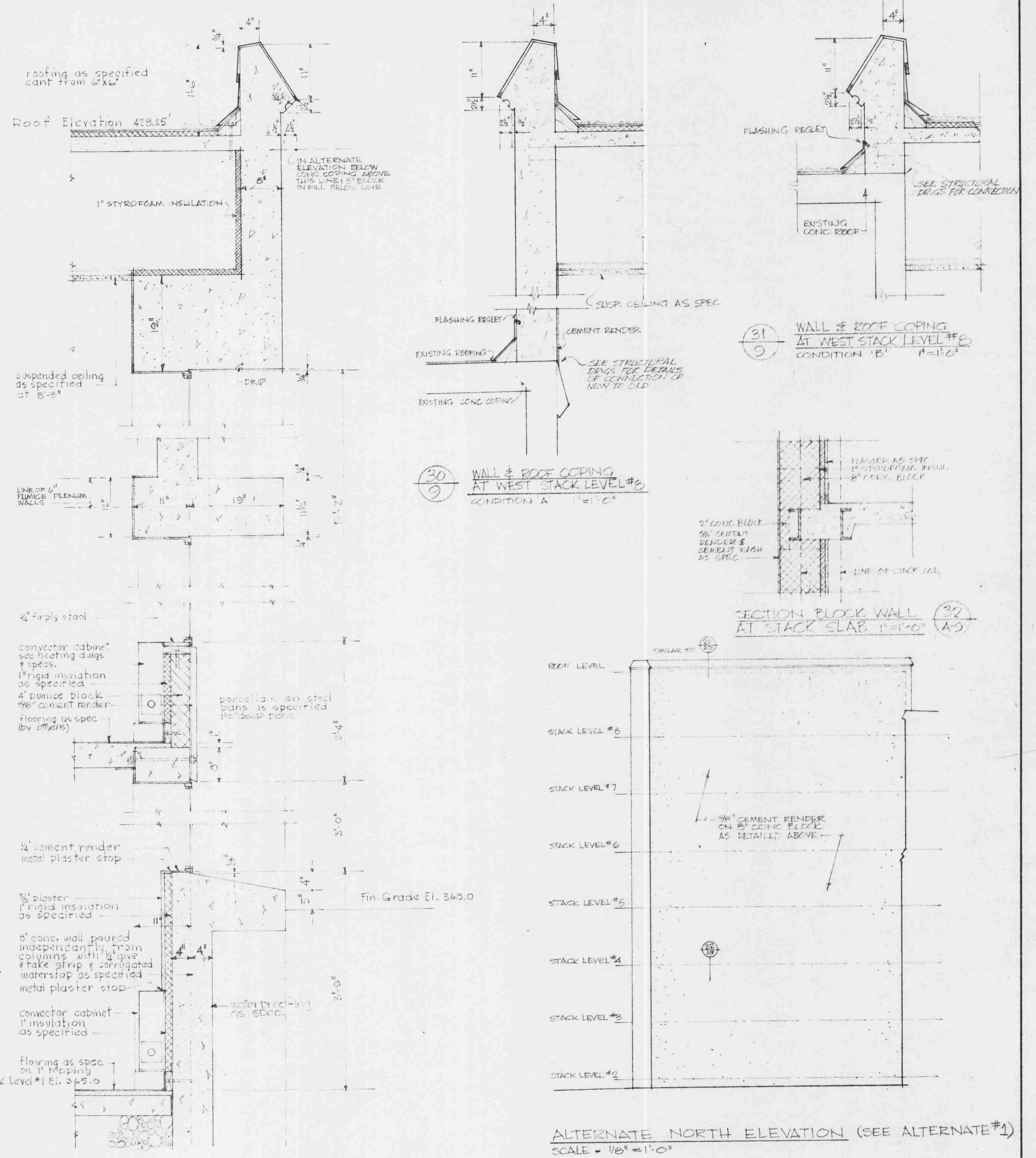
Casement Jamb, Sill & Head. Center pivot sill & Jamb below pivot in Concrete

Fixed Jamb, Sill & Head in Stone



Mullion

Fixed Jamb in Concrete



DETAIL WALL SECTIONS THRU EAST WALL STACK AREA 1"=1'-0"

| No. | DATE | REVISION |
|-----|------|----------|
| | | |
| | | |
| | | |

| | | | | |
|---|--|--|--|-----------------------------------|
| THOMPSON, BERWICK & PRATT ARCHITECTS 1553 ROBSON ST. VANCOUVER 5, B.C. | | ADDITION TO THE LIBRARY UNIVERSITY OF BRITISH COLUMBIA | | SHEET No. A9 OF 9 |
| | | WINDOW & WALL SECTIONS DRAWN: <i>Caplan</i> CHECKED: R.E.A. SCALE: AS SHOWN DATE: MAY 15/59 | | DATE: MAY 15/59 |