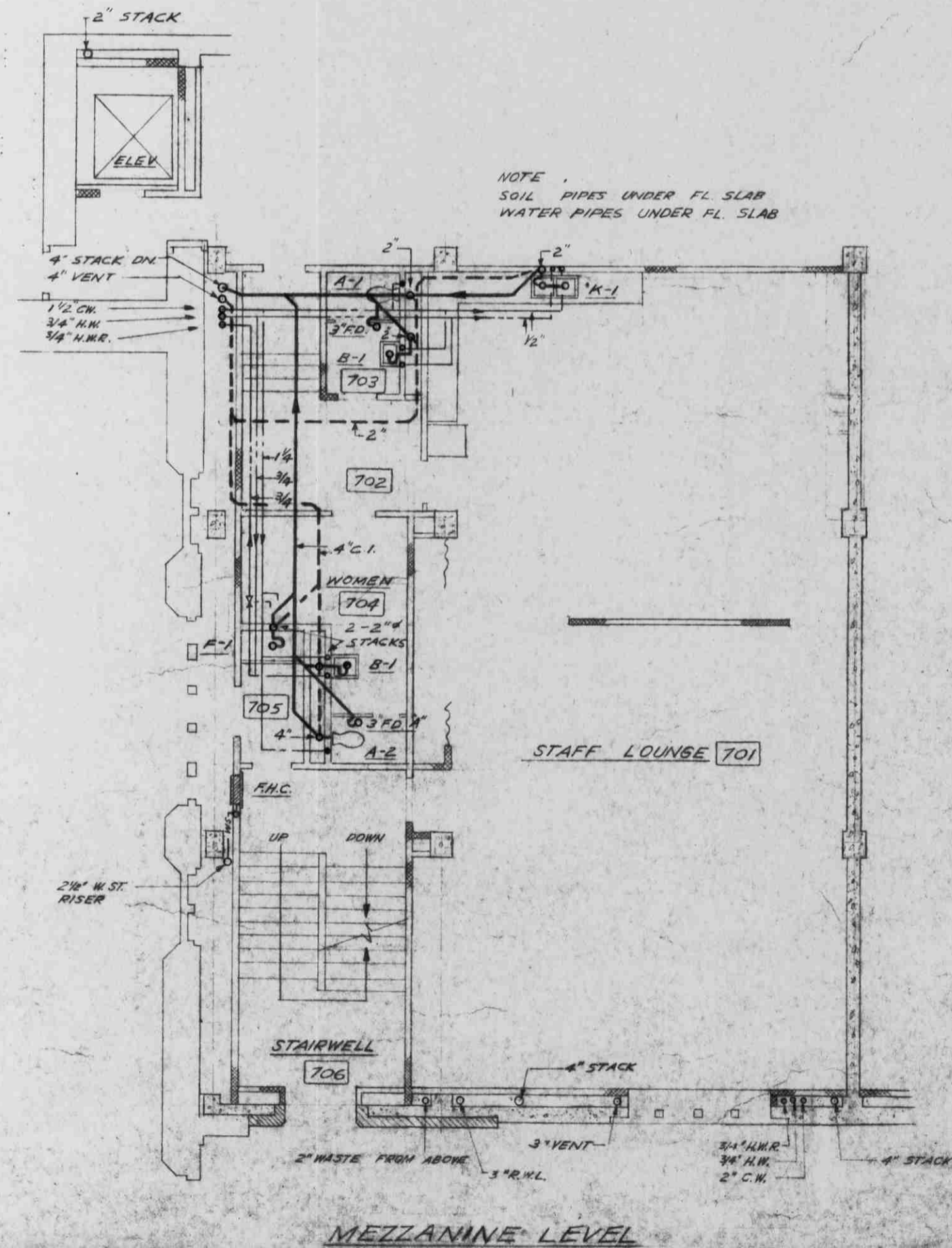


ALTERATIONS IN EXISTING BUILDING
 STACK LEVEL 5 — WEST SIDE
 SCALE: 1/8" = 1'-0"
 NOT IN THIS CONTRACT



STACK LEVEL 5 D. W. THOMSON & COMPANY LTD. CONSULTING MECHANICAL ENGINEERS 1690 WEST BROADWAY VANCOUVER 9, B.C.		THOMPSON, BERWICK & PRATT ARCHITECTS 1555 ROBSON ST. VANCOUVER 5, B.C.		PLUMBING ADDITION TO THE LIBRARY UNIVERSITY OF BRITISH COLUMBIA DRAWN: D. C. T. CHECKED: J. Y. P. SCALE: 1/8" = 1'-0" DATE: MAY 15 1959	JOB NO. 1287 SHEET No. P-4 OF 5
No.	DATE	REVISION			