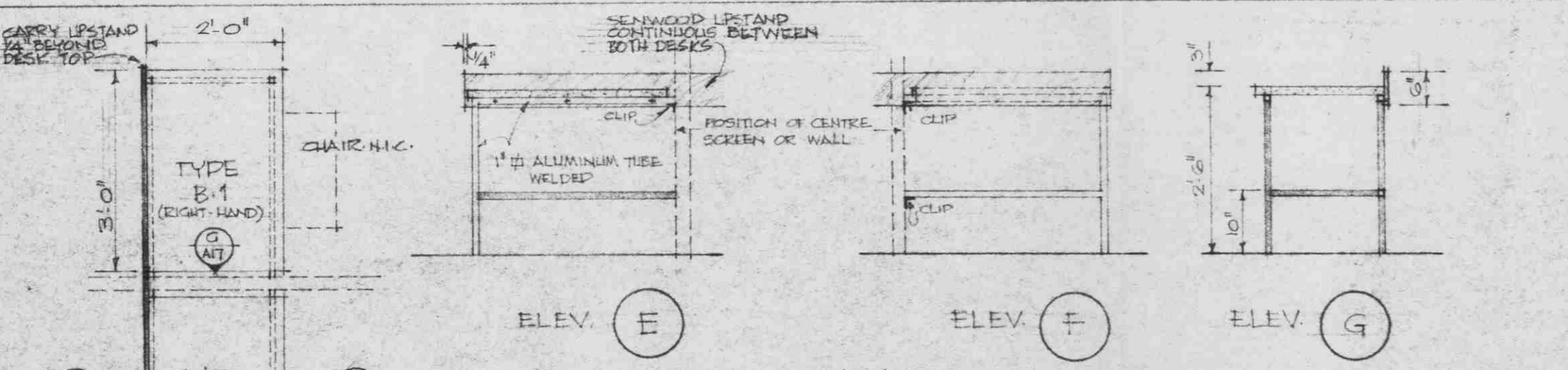


DETAILS OF STUDY DESK TYPE 'A'

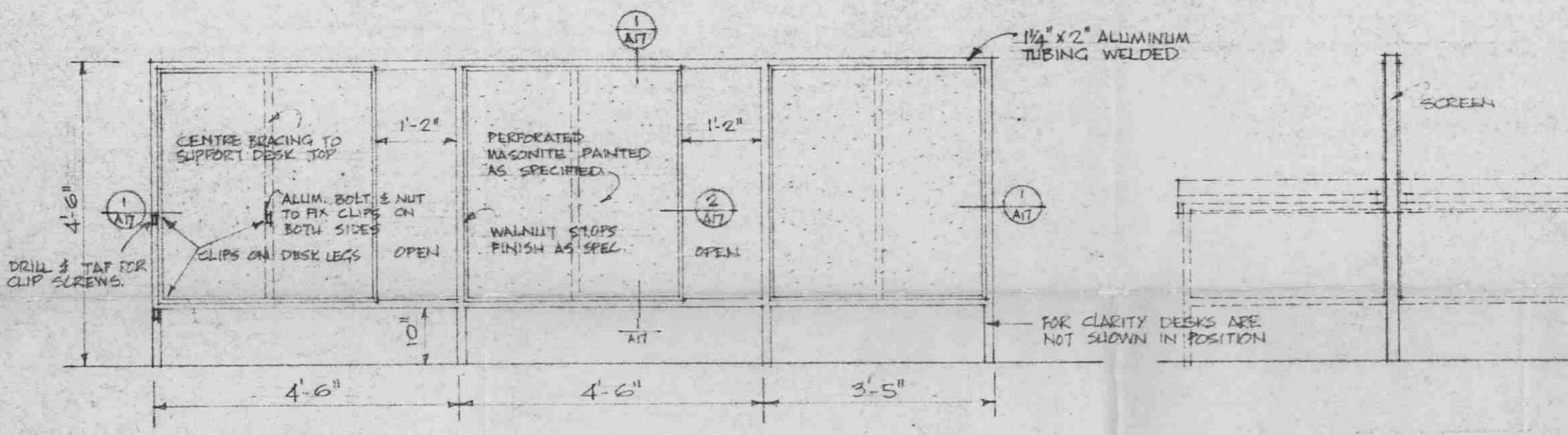
TYPE 'A-1' AND 'A-2' HAVE IDENTICAL DETAILS BUT THE PLAN DIMENSIONS DIFFER:
 TYPE 'A-1' IS 2'-6" x 4'-0"
 TYPE 'A-2' IS 2'-0" x 3'-0"



DETAILS OF STUDY DESK TYPE 'B'

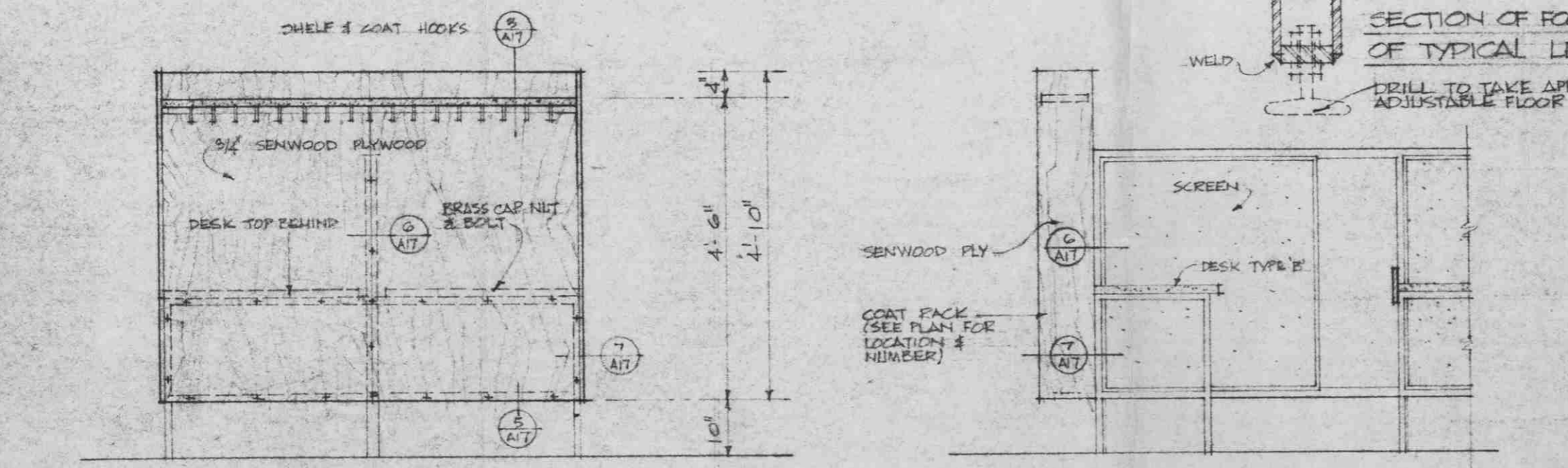
CLIPS TO BE 1/2" ALUMINUM ANGLES 1 1/2" x 1 1/2" x 1" WIDE, FIXED TO CENTRE ALUMINUM SCREEN WITH OVAL HEAD ALUMINUM SCREWS AND ALUMINUM BOLT & NUT - SEE SCREEN ELEVATIONS BELOW.

WHERE DESKS OCCUR AGAINST WALLS, THEY SHALL BE SUPPORTED BY THE CLIPS TOGGLE BOLTED TO TILE, OR BACKING IN CONY. CABINET.



DETAILS OF CENTRE SCREEN BETWEEN STUDY DESKS TYPE 'B'

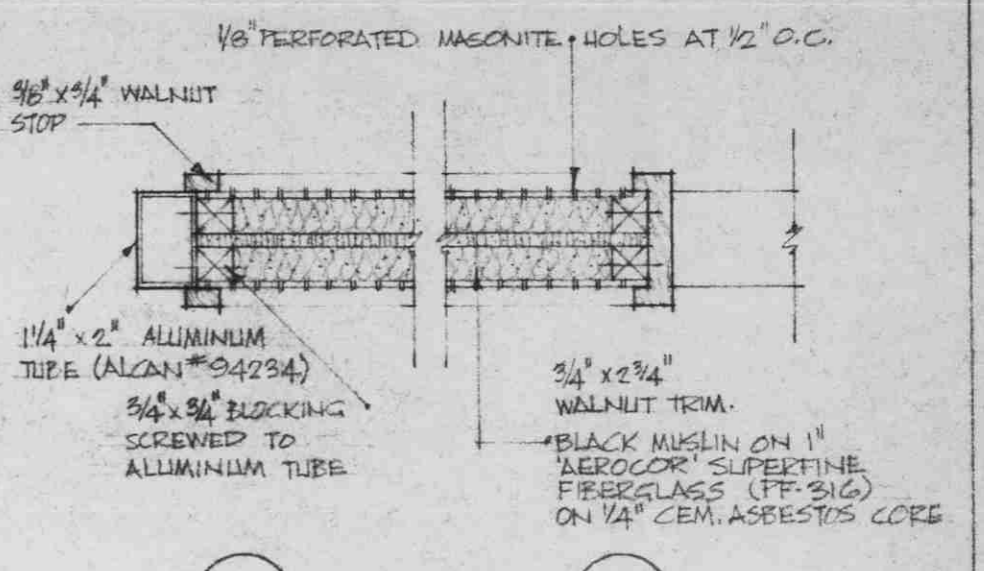
MOST OF THESE ARE 3 UNIT SCREENS AS SHOWN - BUT SOME ARE SMALLER & SOME LARGER - SEE SPEC



ELEVATION H

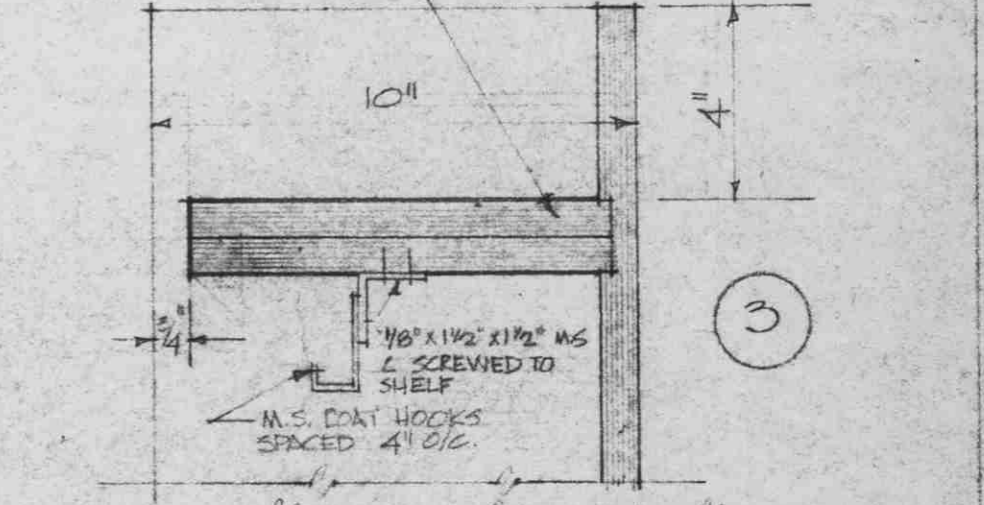
ELEVATION J

GENERAL NOTES -
 THE GENERAL CONDITIONS AND SPECIFICATION OF WORK FOR ADDITIONS TO THE LIBRARY - UNIVERSITY OF BRITISH COLUMBIA SHALL APPLY TO THIS PORTION OF THE CONTRACT. SEE 'FINISHED CARPENTRY & MILLWORK' SECTION FOR SPECIFICATION OF SENWOOD PLYWOOD & WALNUT TRIM.
 ALUMINUM TUBING FOR SCREEN, DESK LEGS, & COAT RACK FRAMES, AS WELL AS CLIPS FOR FASTENING SAME SHALL HAVE A POLISHED ANODIZED FINISH (ME5/CE/AN).
 PERFORATED MASONITE SHALL BE PRE-PAINTED - BEFORE APPLYING TO MUELIN WITH ONE SPRAY COAT OF SPECIAL HARD-FINISH SEMI-GLOSS LACQUER AS MANUFACTURED BY 'BAPCO' PAINTS. SAME SHALL BE APPLIED AS PER MANUFACTURERS SPECIFICATIONS.

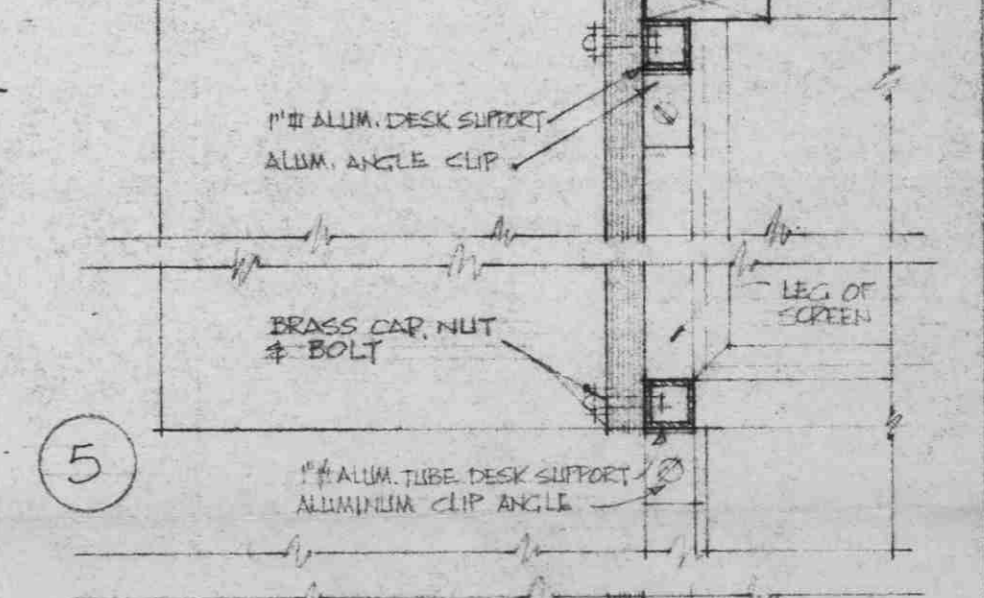


1

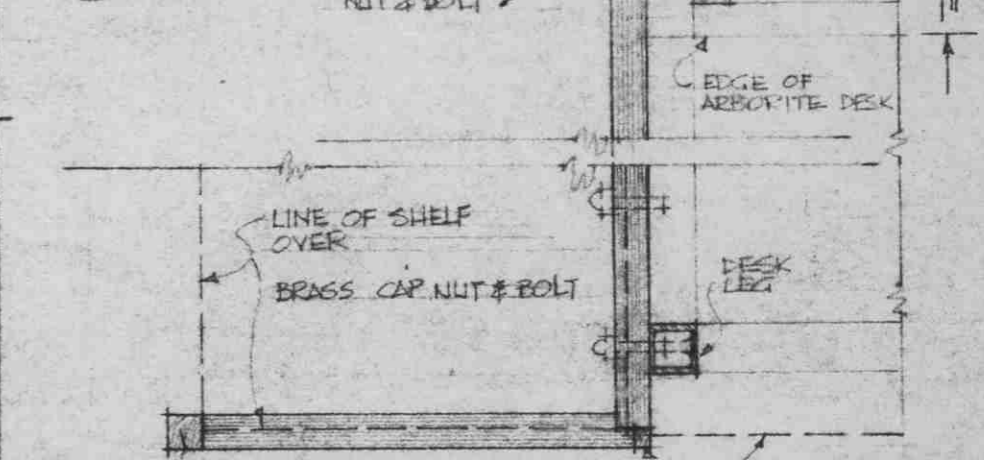
2



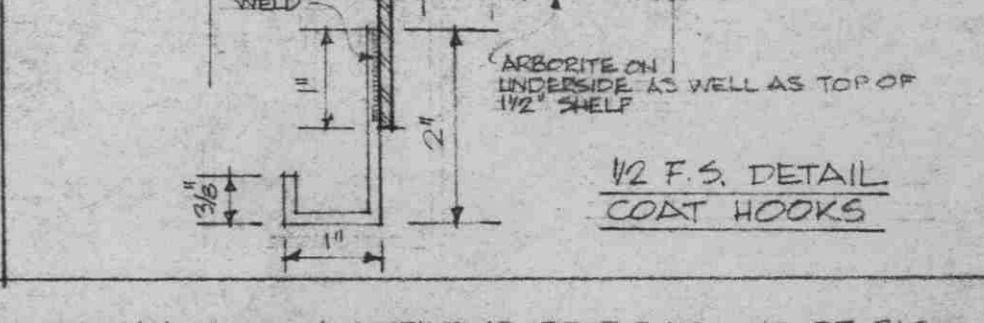
3



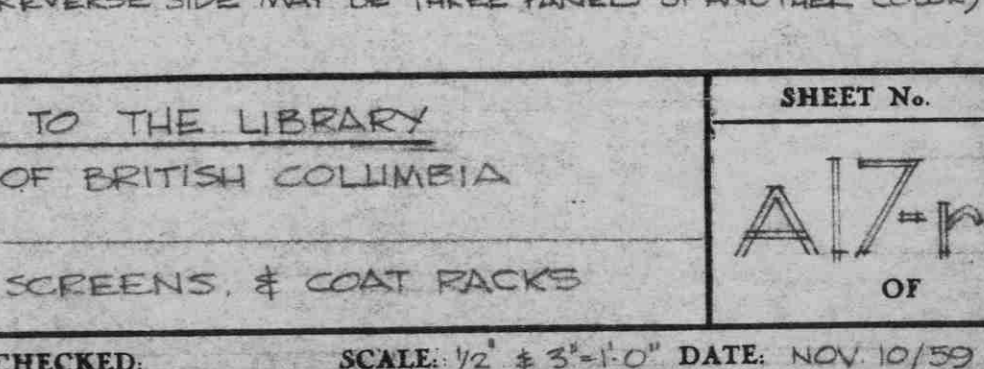
4



5



6



7

NUMBER	DATE	REVISIONS
1	FEB. 18/60	REVISIONS IN DETAIL FOR TENDERING
No.	DATE	REVISION

THOMPSON, BERWICK & PRATT
 ARCHITECTS

1555 ROBSON ST. VANCOUVER 5, B. C.

ADDITION TO THE LIBRARY
 UNIVERSITY OF BRITISH COLUMBIA

STUDY DESKS, SCREENS, & COAT RACKS

DRAWN: R. B. A. CHECKED: SCALE: 1/2" = 3'-0" DATE: NOV 10/59

SHEET No.
A17
 OF