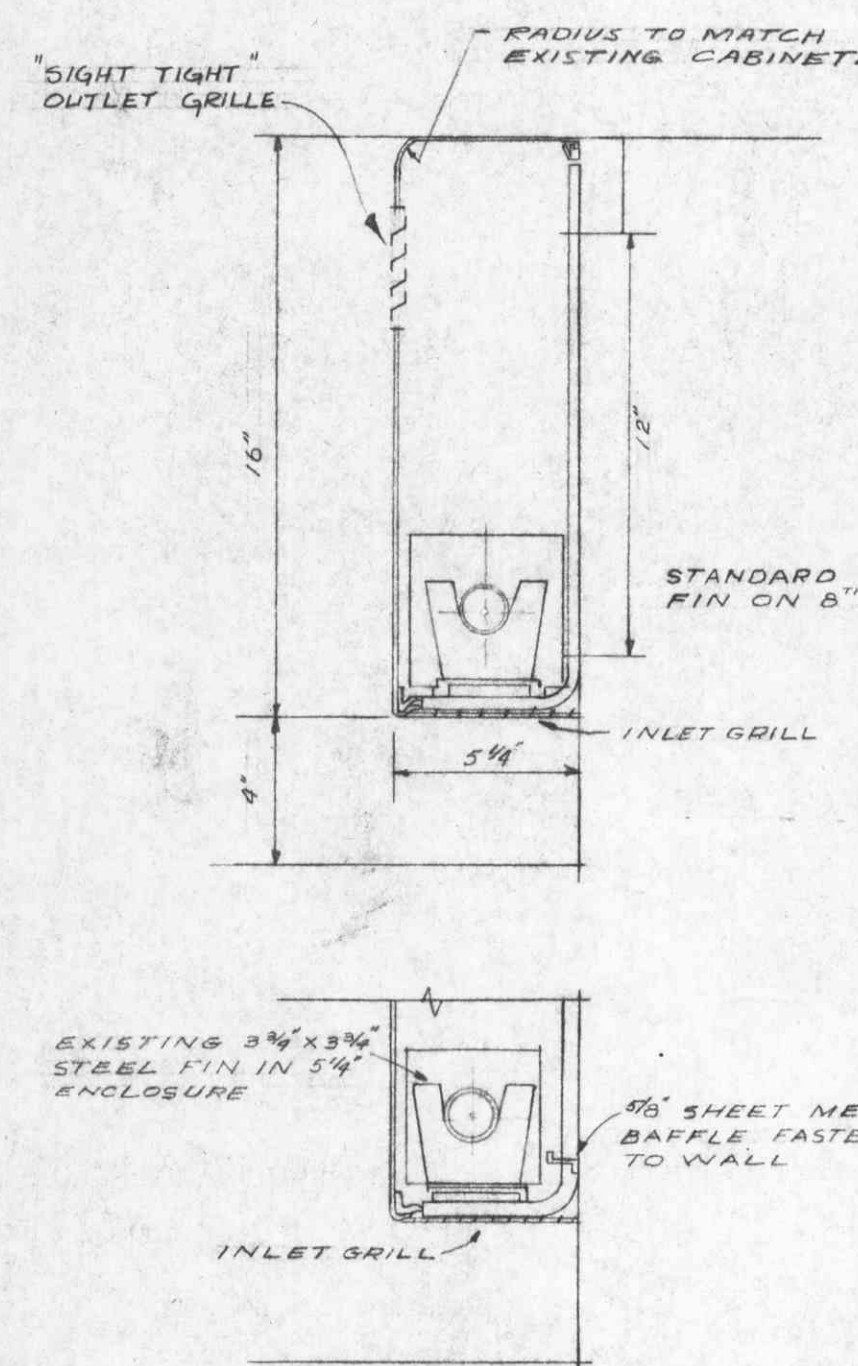
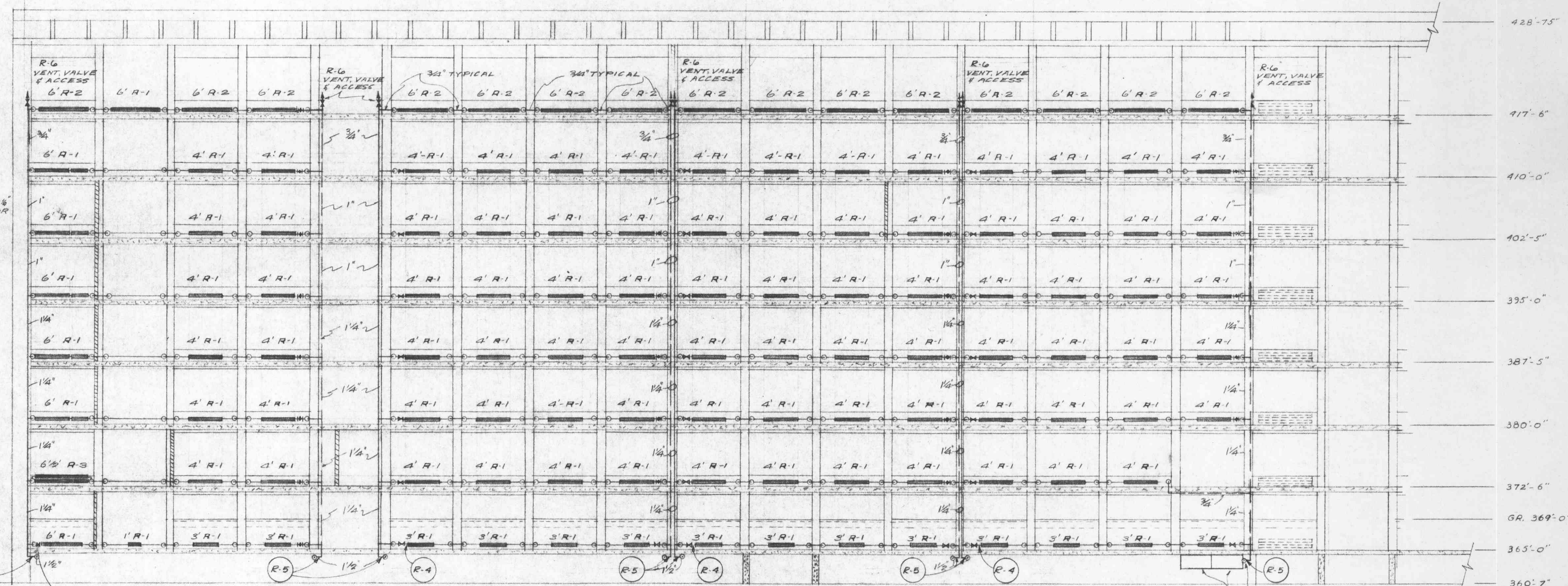


HEATING SYSTEM SYMBOLS

- R-1 EXISTING TRANE SERIES 50 WALL FIN IN NEW 16 ENCLOSURE OUTPUT 1000 B.T.U./FT.
- R-2 NEW TRANE SERIES 40 ALUM. WALL FIN IN NEW 16 ENCLOSURE OUTPUT 1450 B.T.U./FT.
- R-3 NEW TRANE SERIES 40 ALUM. W.F. 2 ROWS @ 6" O.C. IN NEW 16T. ENCLOSURE OUTPUT 1780 B.T.U./FT.
- R-4 PROVIDE RELOCATED AUTO CONTROL RADIATION VALVE (RELOCATED EXISTING) ON EACH FLOOR AT THIS LOCATION. (32 OF 66 TO BE RE-USED)
- R-5 EACH RISER TO BE VALVED WITH LINE SIZE ISOLATION & DRAIN VALVES
- R-6 PIPE DISCHARGE FROM AIR VENTS BACK INDIVIDUALLY TO FUNNEL DRAIN IN FAN ROOM. IDENTIFY EACH LINE AT DRAIN.
- T RELOCATE EXISTING THERMOSTAT CONTROLLING ADJACENT RELOCATED AUTO RAD. VALVES. (22 OF 22 TO BE RE-USED)

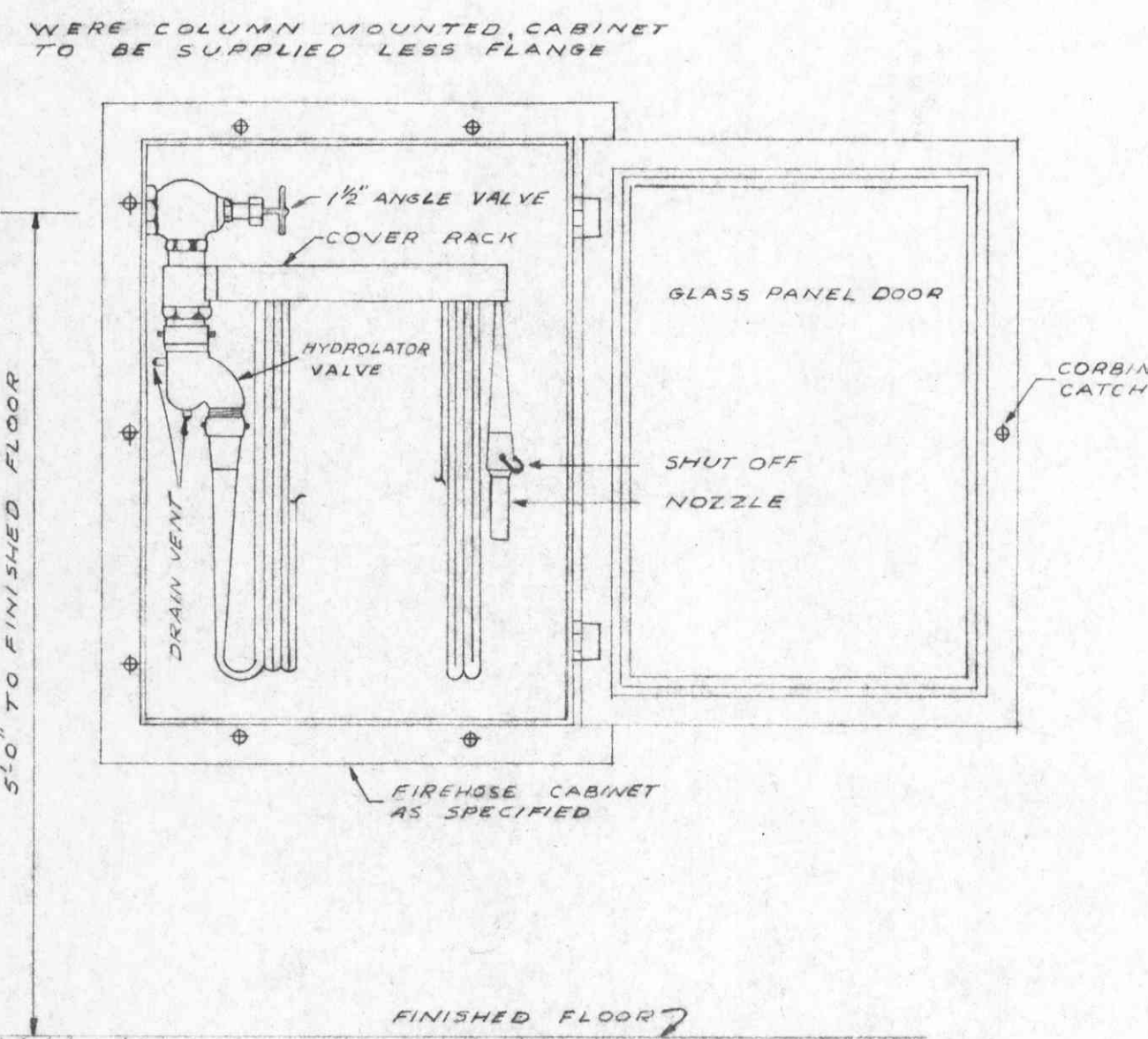


DETAIL OF WALL FIN NOT TO SCALE

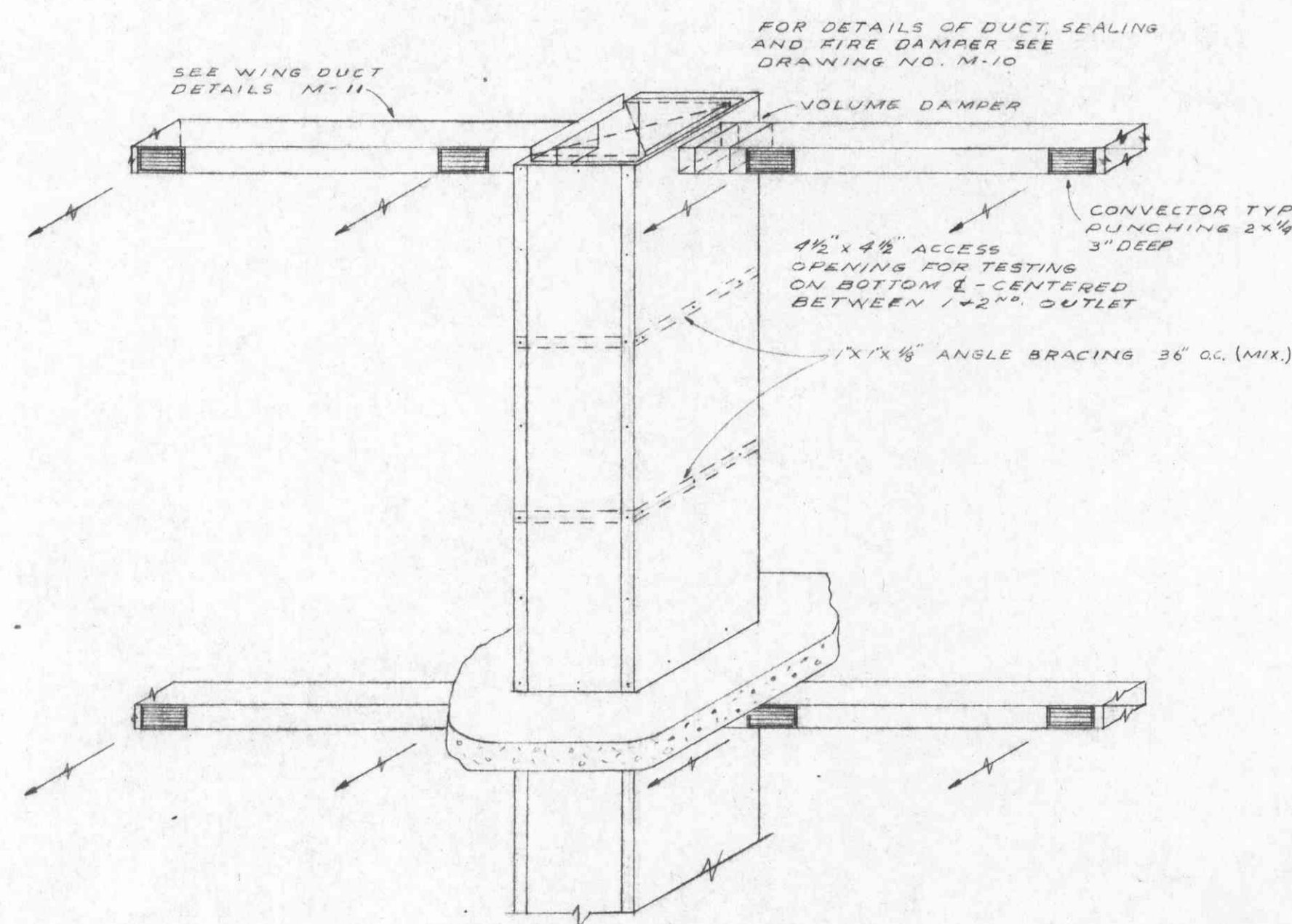


R-4 PROVIDE GATE VALVE ON EACH FLOOR AT THIS LOCATION

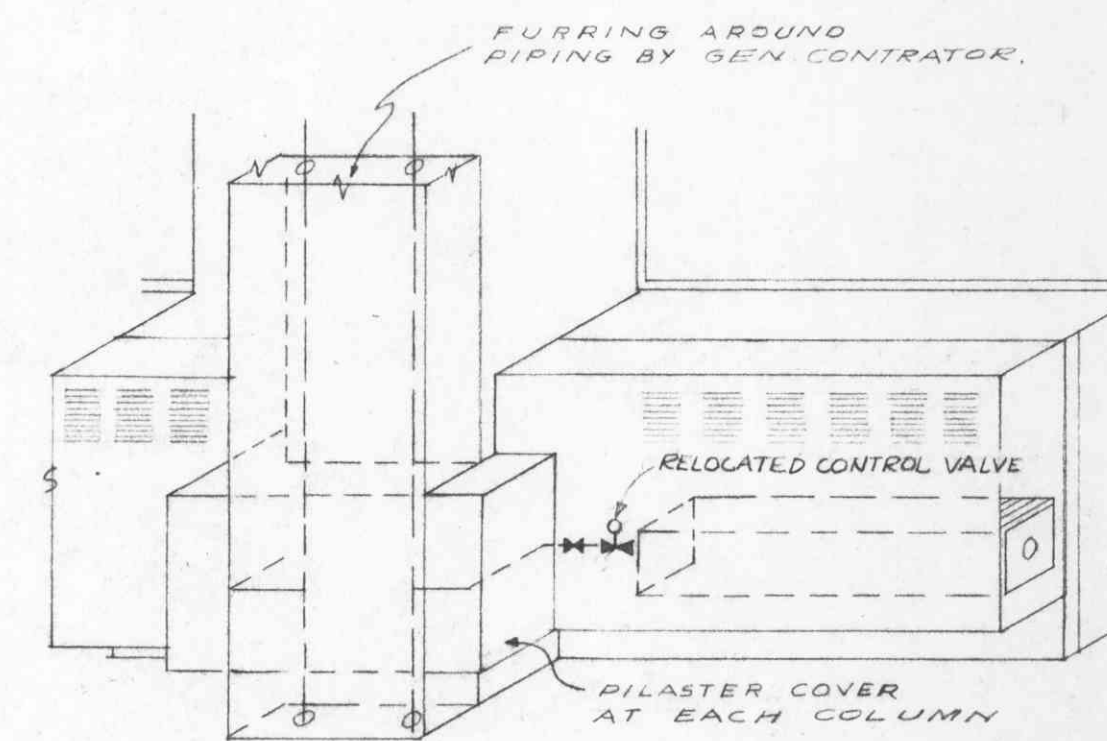
2-46\"/>



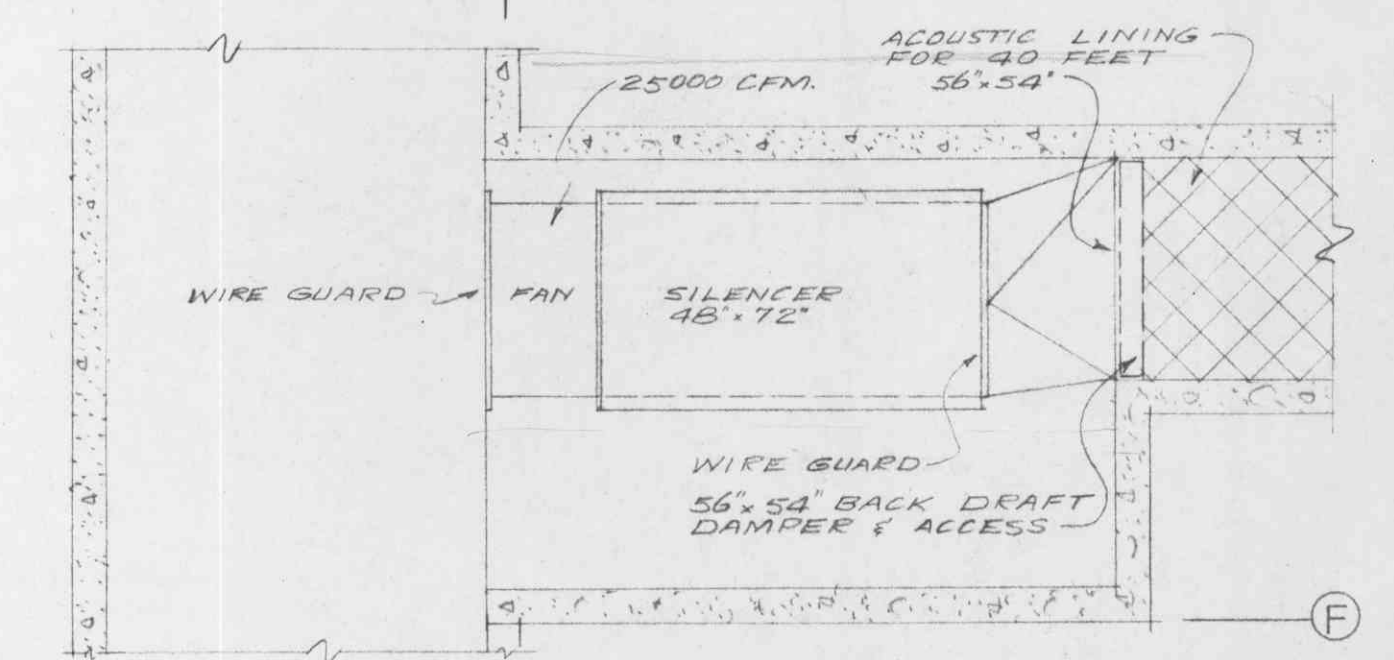
DETAIL OF FIREHOSE CABINET NOT TO SCALE



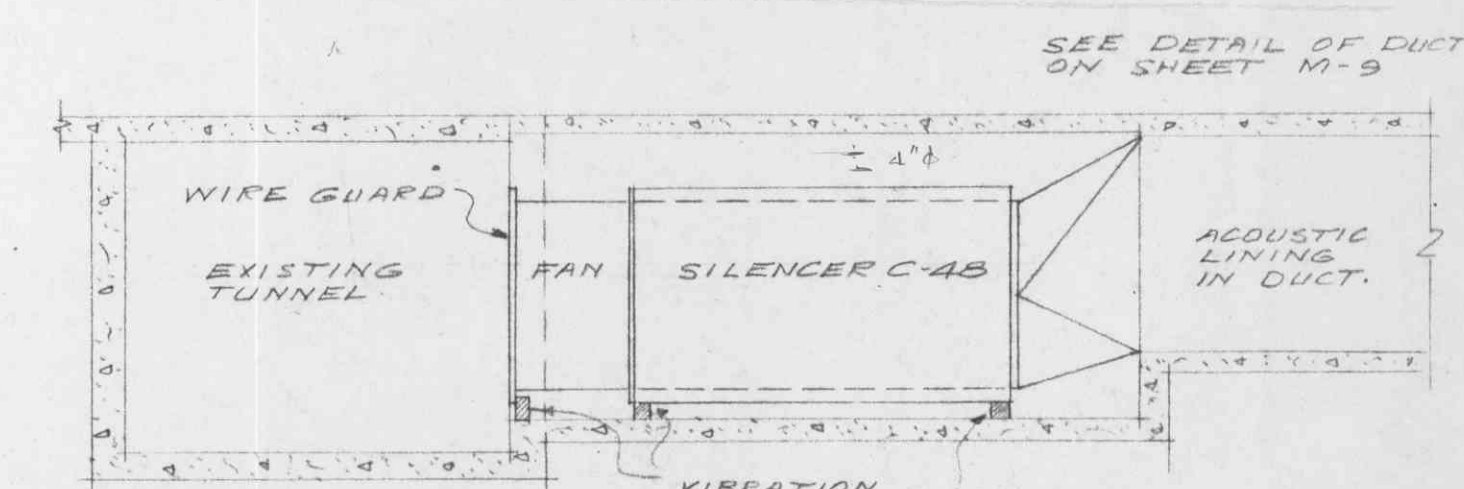
SUPPLY DUCT DETAILS NOT TO SCALE



DETAILS OF PIPE COVERS AT COLUMNS 15 & 19 NOT TO SCALE



PLAN



ELEVATION OF RETURN FAN IN 1959 STACKS 1/2\"/>

SCALE 1/8\"/>



JOHN M. BEAN P. ENG.
CONSULTING MECHANICAL ENGINEER
779 WEST BROADWAY VANCOUVER B.C.

ALTERATIONS TO THE LIBRARY
UNIVERSITY OF BRITISH COLUMBIA
NORTH WALL ELEVATION & DETAILS
TOBY, RUSSELL & BUCKWELL
ARCHITECTS - VANCOUVER, B.C.

JOB No. 6356
DATE MARCH 31/64
DRAWN J.D.S. & D.J.
CHECKED
DRAWING No. M.11.11

No. REVISION DATE