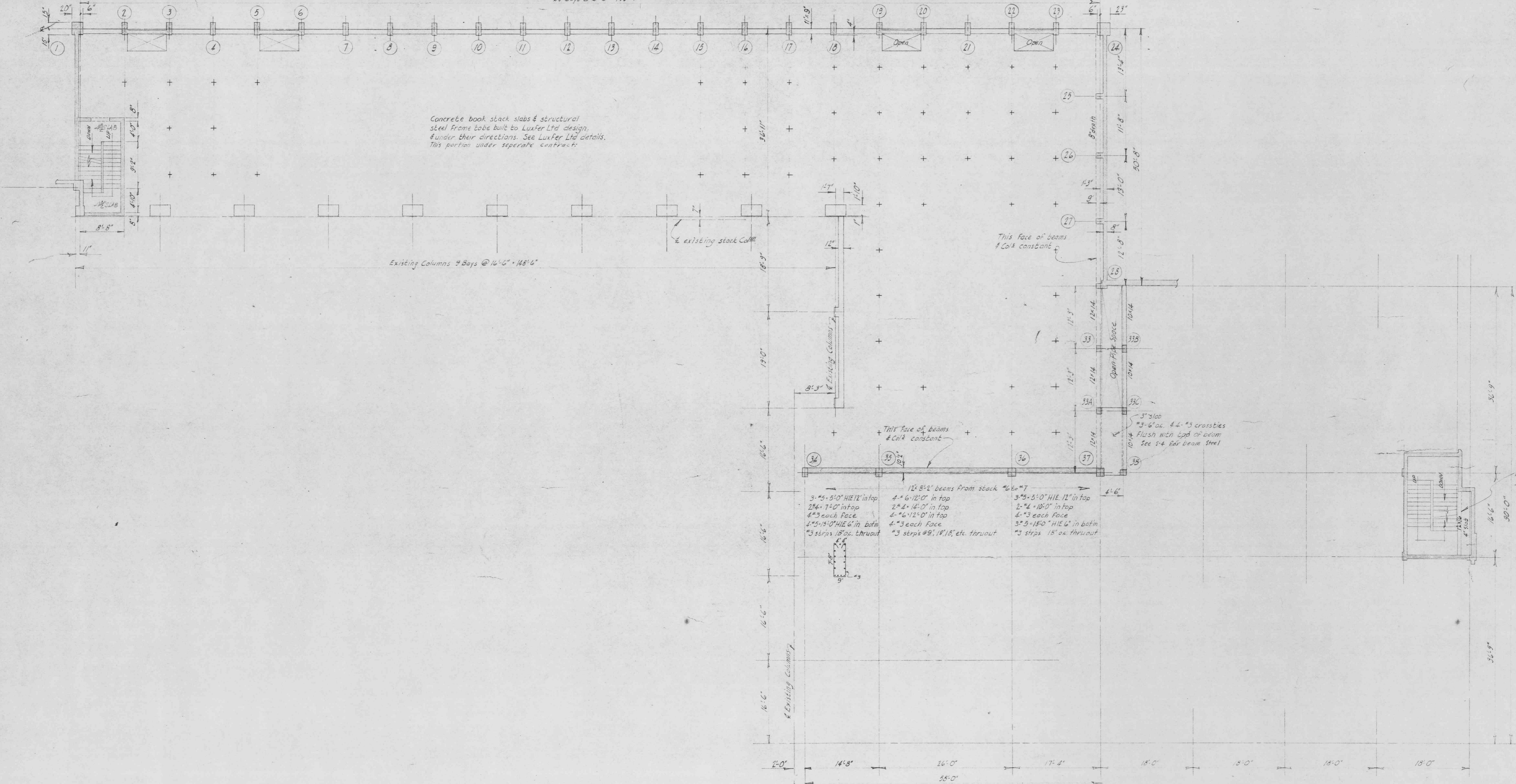


13 Bays @ 8'-5" - 19'-4"



Concrete book stack slabs & structural steel frame to be built to Luxfer Ltd design, & under their directions. See Luxfer Ltd details. This portion under separate contract.

Existing Columns 9 Bays @ 16'-6" x 14'-6"

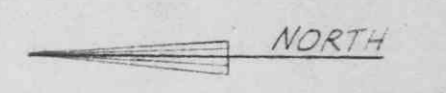
12x8 1/2 beams from stack #6 to #7
 3-#5-5'-0" HIE 12" in top
 2#4-7'-0" in top
 4-#3 each face
 4-#5-15'-0" HIE 6" in bottom
 #3 strips 18" oc thruout

4-#6-12'-0" in top
 2-#4-14'-0" in top
 4-#6-12'-0" in top
 4-#3 each face
 #3 strips #9, 18", etc thruout

3-#5-5'-0" HIE 12" in top
 2-#4-10'-0" in top
 4-#3 each face
 3-#5-15'-0" HIE 6" in bottom
 #3 strips 18" oc thruout

3" x 3" 100 #3-6" oc, 4-#4-#3 crossies flush with top of column See S-4 for beam steel

NOTES
 - For details of East stack beams & South stack beams see drawing S-4
 - Use 3" slab join exterior wall & beam tie with #3 @ 12" x 2'-6" HIE.



F. WAVELL URRY
 CONSULTING ENGINEER
 1264 W. PENDER VAN. B.C.

STRUCTURAL
 ADDITION TO THE LIBRARY
 UNIVERSITY OF BRITISH COLUMBIA
 STACK LEVEL # 6

SHEET No.
56
 OF

No.	DATE	REVISION

THOMPSON, BERWICK & PRATT
 ARCHITECTS
 1553 ROBSON ST. VANCOUVER 5, B.C.

DRAWN: [Signature] CHECKED: [Signature] SCALE: 1/8" = 1'-0" DATE: 10/11/59