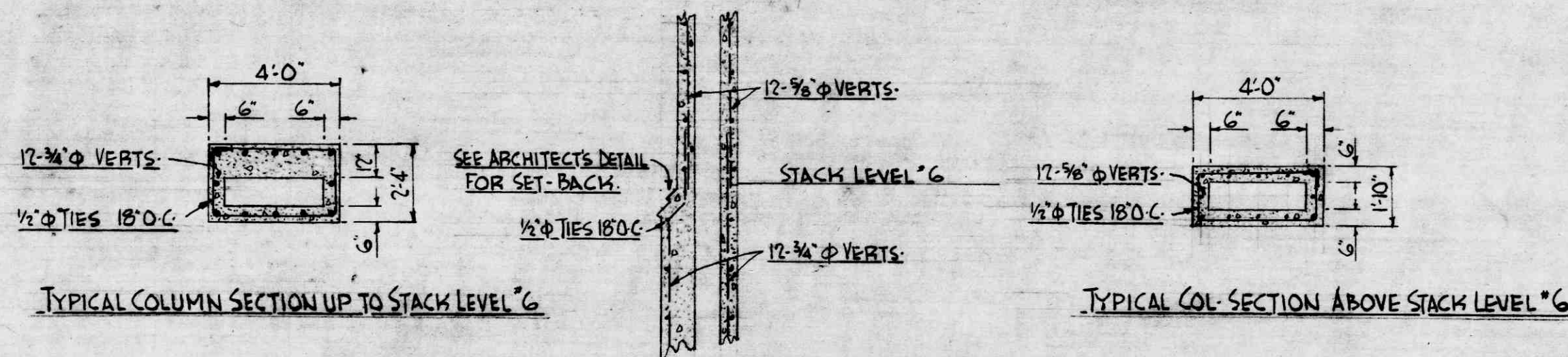
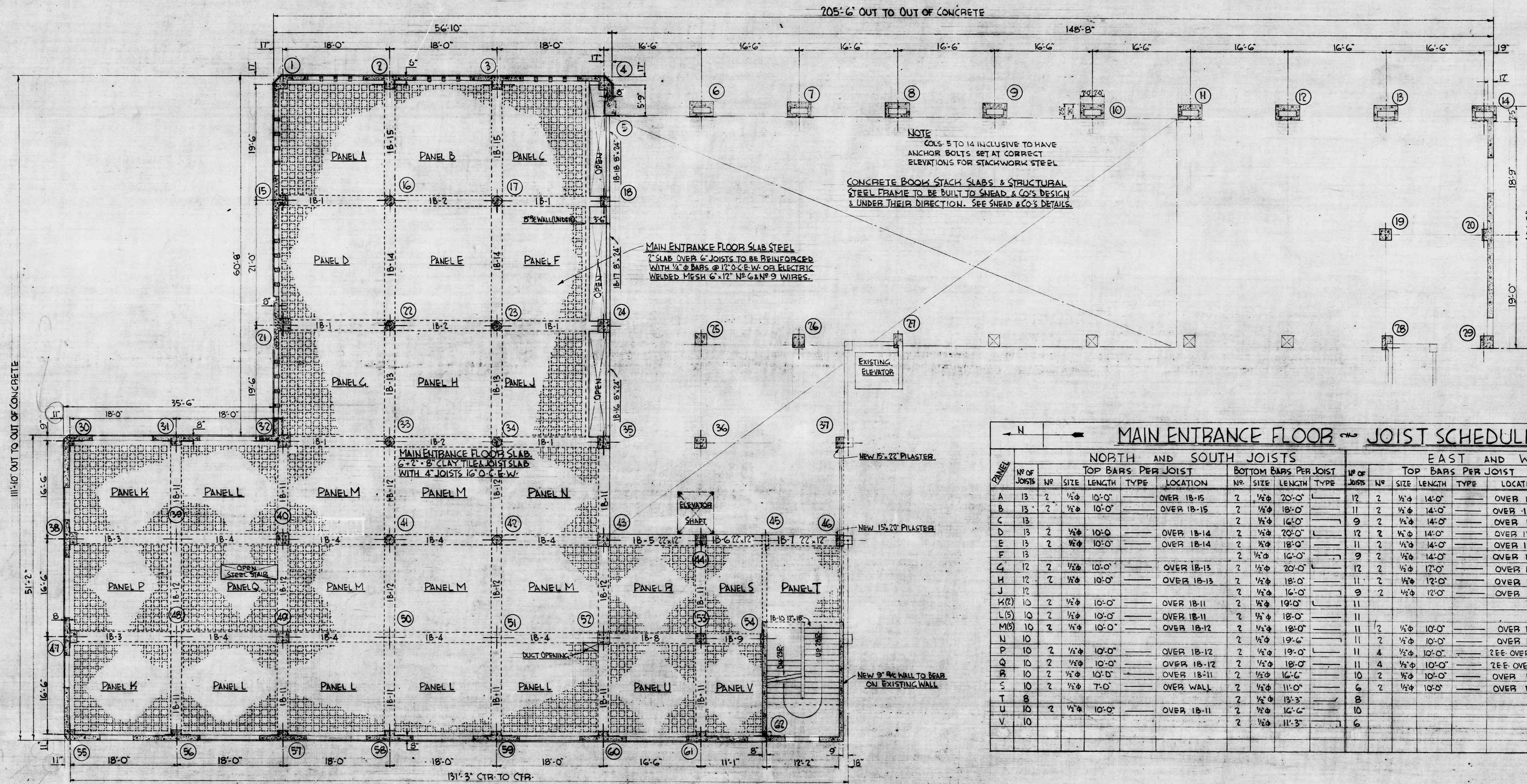


SECTION THRO' TYPICAL MAIN FLOOR BEAM
1/2" = 1 FOOT
ALL MAIN FLOOR BEAMS TO BE 20"x12" DEEP
UNLESS OTHERWISE NOTED.

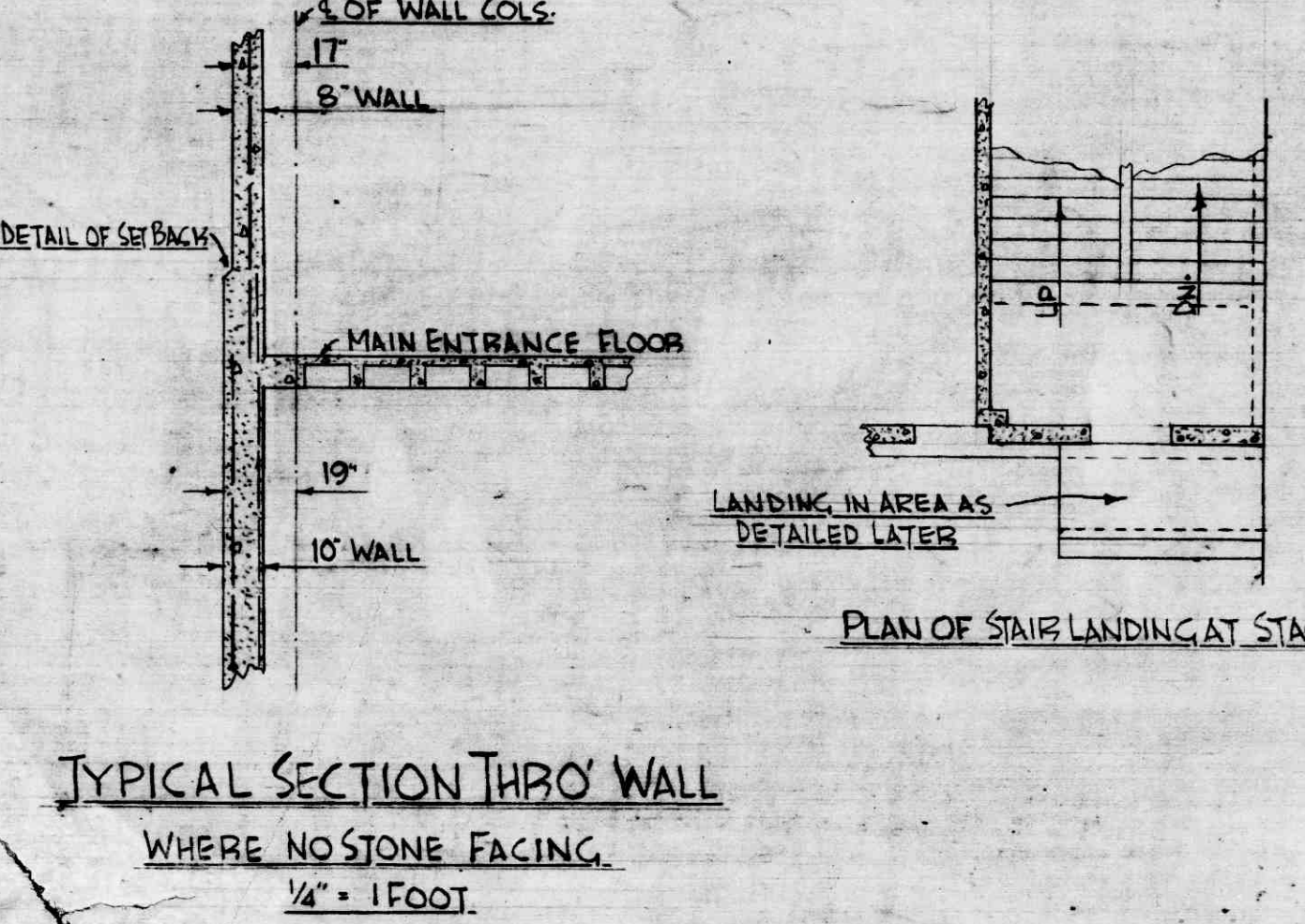
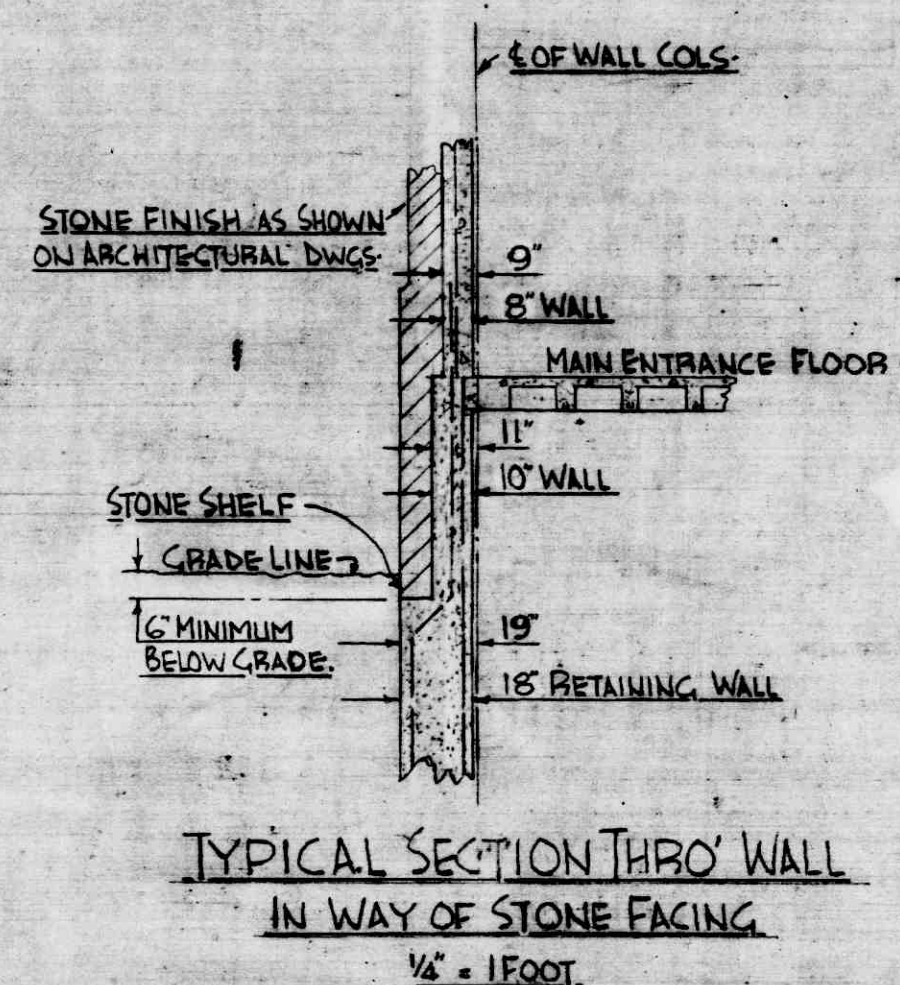
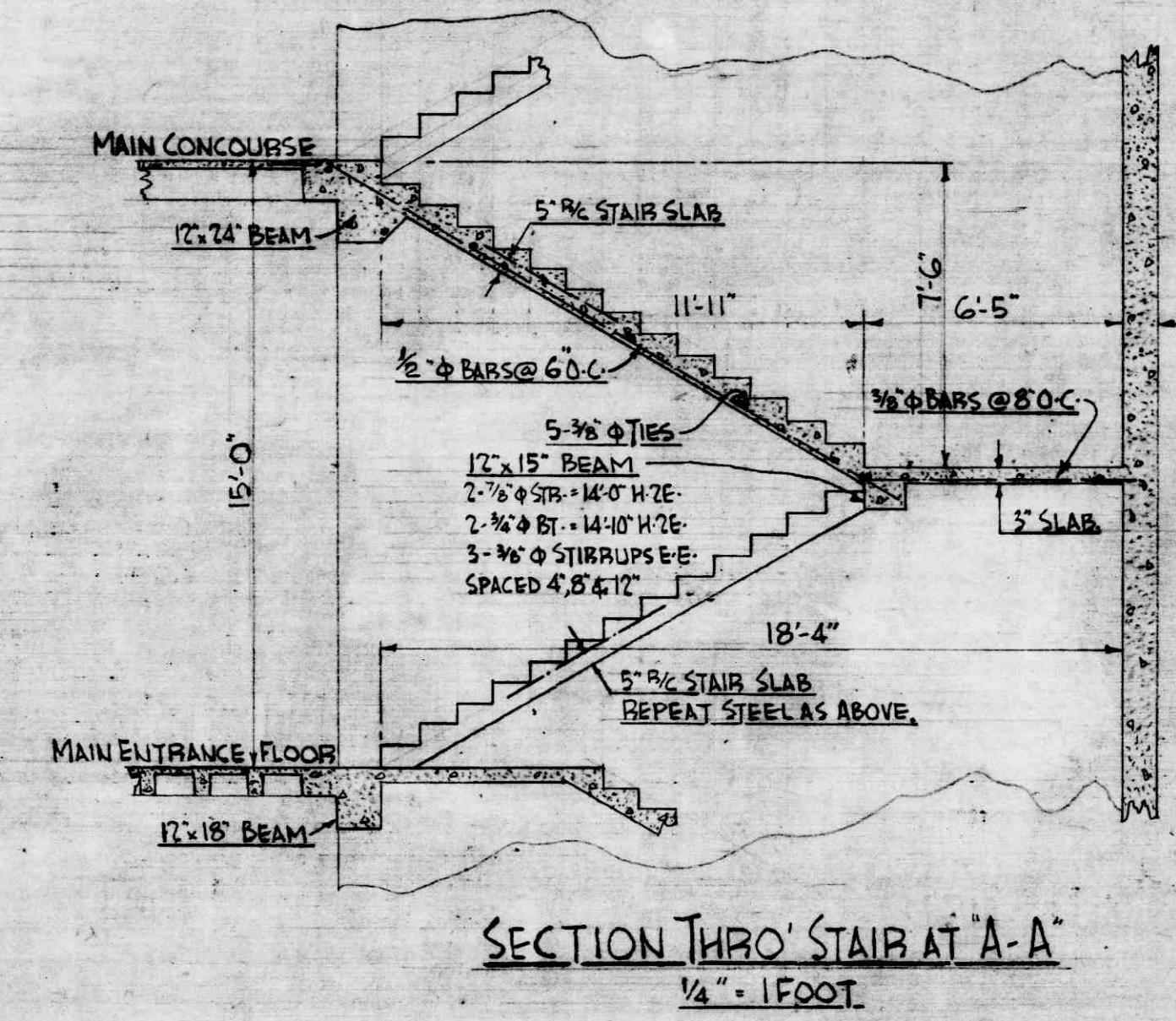


DETAILS OF HOLLOW COLUMN AT BACK OF STACK ROOMS
1/2" = 1 FOOT



PANEL	NO OF JOISTS	NORTH AND SOUTH JOISTS						EAST AND WEST JOISTS						TOTAL WEIGHT					
		TOP BARS PER JOIST			BOTTOM BARS PER JOIST			TOP BARS PER JOIST			BOTTOM BARS PER JOIST								
		NO	SIZE	LENGTH	TYPE	LOCATION	NO	SIZE	LENGTH	TYPE	LOCATION	NO	SIZE		LENGTH	TYPE			
A	13	2	1/2"	10'-0"		OVER 18-15	2	1/2"	20'-0"		12	2	1/2"	14'-0"	OVER 18-1	2	1/2"	21'-0"	1083
B	13	2	1/2"	10'-0"		OVER 18-15	2	1/2"	18'-0"		11	2	1/2"	14'-0"	OVER 18-2	2	1/2"	21'-0"	1002
C	13	2	1/2"	10'-0"		OVER 18-14	2	1/2"	16'-0"		9	2	1/2"	14'-0"	OVER 18-1	2	1/2"	21'-0"	699
D	13	2	1/2"	10'-0"		OVER 18-14	2	1/2"	20'-0"		12	2	1/2"	14'-0"	OVER 18-1	2	1/2"	21'-0"	1083
E	13	2	1/2"	10'-0"		OVER 18-14	2	1/2"	18'-0"		11	2	1/2"	14'-0"	OVER 18-2	2	1/2"	21'-0"	1002
F	13	2	1/2"	10'-0"		OVER 18-13	2	1/2"	18'-0"		9	2	1/2"	14'-0"	OVER 18-1	2	1/2"	21'-0"	699
G	12	2	1/2"	10'-0"		OVER 18-13	2	1/2"	20'-0"		12	2	1/2"	12'-0"	OVER 18-1	2	1/2"	19'-6"	986
H	12	2	1/2"	10'-0"		OVER 18-13	2	1/2"	18'-0"		11	2	1/2"	12'-0"	OVER 18-2	2	1/2"	19'-6"	912
J	12	2	1/2"	10'-0"		OVER 18-11	2	1/2"	16'-0"		9	2	1/2"	12'-0"	OVER 18-1	2	1/2"	19'-6"	634
K(2)	10	2	1/2"	10'-0"		OVER 18-11	2	1/2"	19'-0"		11	2	1/2"	10'-0"	OVER 18-4	2	1/2"	17'-6"	1230
L(5)	10	2	1/2"	10'-0"		OVER 18-11	2	1/2"	18'-0"		11	2	1/2"	10'-0"	OVER 18-4	2	1/2"	16'-6"	3160
M(9)	10	2	1/2"	10'-0"		OVER 18-12	2	1/2"	18'-0"		11	2	1/2"	10'-0"	OVER 18-4	2	1/2"	16'-6"	649
N	10	2	1/2"	10'-0"		OVER 18-12	2	1/2"	19'-0"		11	2	1/2"	10'-0"	OVER 18-4	2	1/2"	16'-6"	925
P	10	2	1/2"	10'-0"		OVER 18-12	2	1/2"	18'-0"		11	4	1/2"	10'-0"	SEE OVER 18-4	2	1/2"	16'-6"	910
Q	10	2	1/2"	10'-0"		OVER 18-11	2	1/2"	16'-6"		10	2	1/2"	10'-0"	OVER 18-8	2	1/2"	18'-0"	730
R	10	2	1/2"	10'-0"		OVER 18-11	2	1/2"	16'-6"		6	2	1/2"	10'-0"	OVER 18-9	2	1/2"	18'-0"	465
S	10	2	1/2"	7'-0"		OVER WALL	2	1/2"	11'-0"		8	2	1/2"	10'-0"				312	
T	8	2	1/2"	10'-0"		OVER 18-11	2	1/2"	15'-3"		10	2	1/2"	10'-0"				589	
U	10	2	1/2"	10'-0"		OVER 18-11	2	1/2"	16'-6"		6	2	1/2"	10'-0"				291	
V	10	2	1/2"	10'-0"		OVER 18-11	2	1/2"	11'-3"		6	2	1/2"	10'-0"				291	
											TOTAL		21241						

NOTE - FLOOR TILES
ALL TILES IN 2WAY SLAB SYSTEM ARE TO BE SECURED IN PLACE BEFORE CONCRETE IS POURED BY 1/4" OR 3/8" PLYWOOD STRIPS SECURED IN BOTTOM OF JOISTS OR BY ANY OTHER APPROVED METHOD. OPEN ENDS OF TILES ARE TO BE MASKED WITH WOOD, SHEET METAL OR MORTAR INSERTS.



LIBRARY BUILDING
SCALE - 1/8" = 1 FOOT
DATE - JULY 26, 1946
DRAWN BY - WES.
CHECKED BY -
F. WAVELL URRY
CONSULTING STRUCTURAL ENGINEER
SHARRP & THOMPSON
ARCHITECTS
VANCOUVER, B.C.
DWG. NO. S2
UNIVERSITY OF BRITISH COLUMBIA.