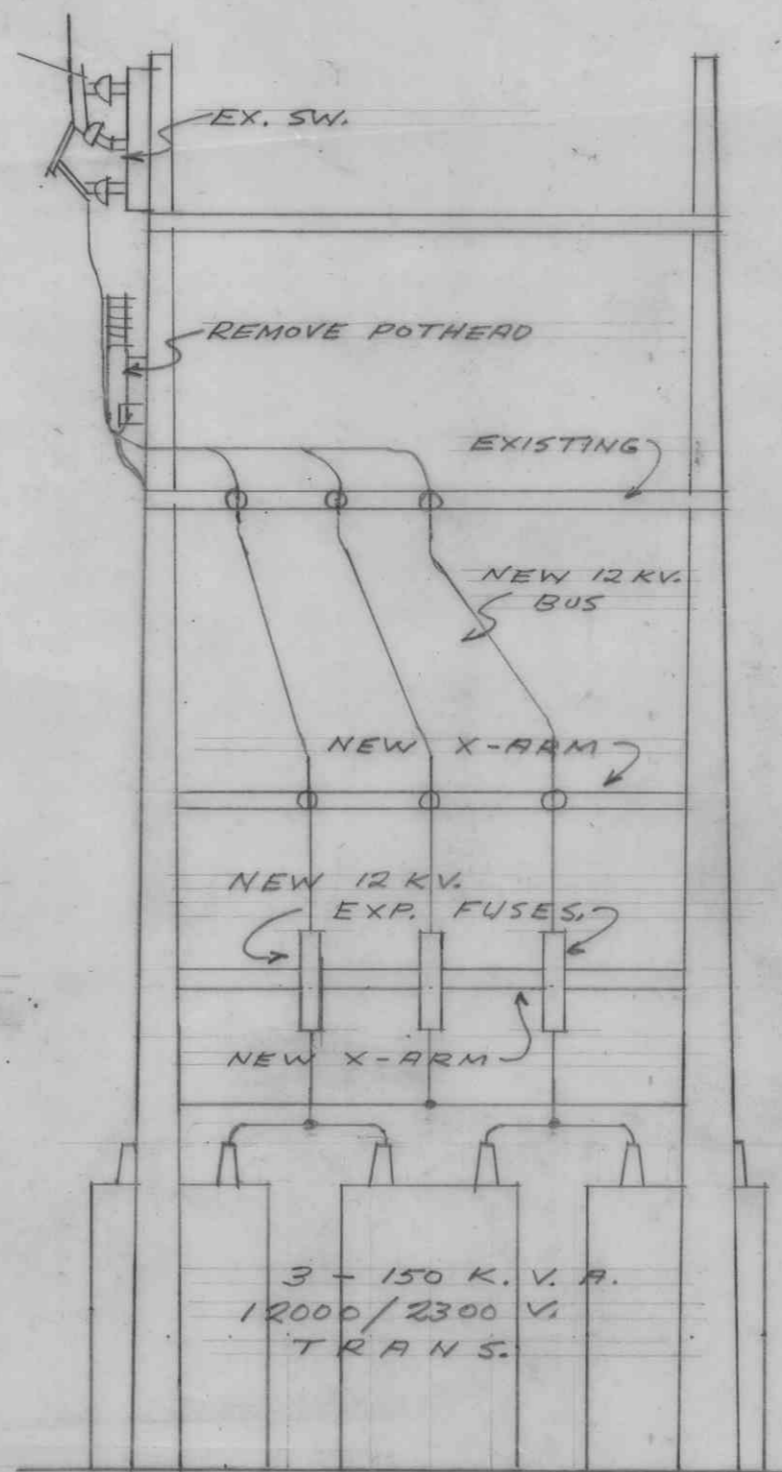
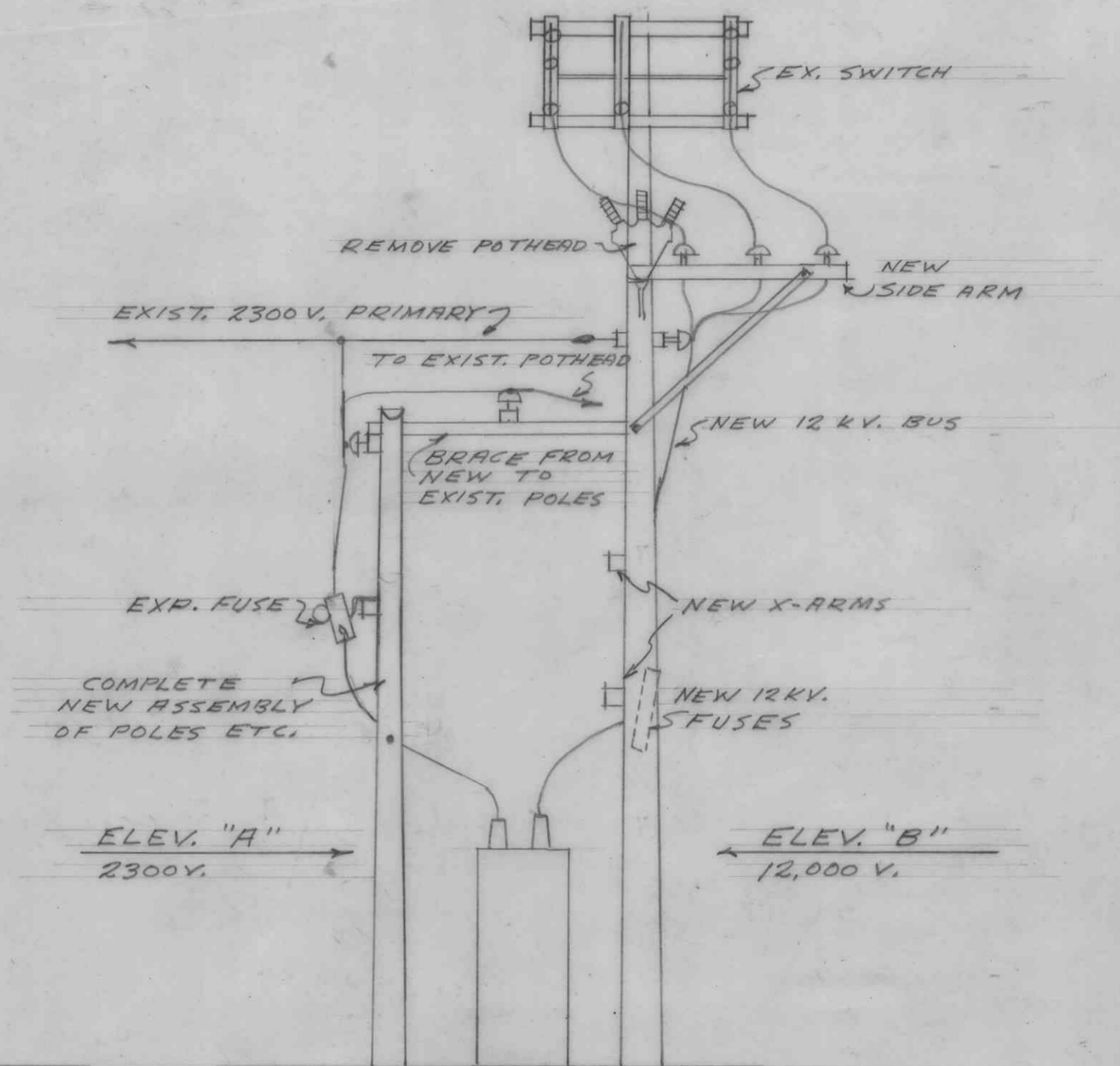


ELEVATION "A"  
2300 V.



ELEVATION "B"  
12,000 V.



END VIEW

TEMPERARY SUB STATION 12,000 / 2300 VOLTS		
REVISION DATE	UNIVERSITY OF BRITISH COLUMBIA	DATE 20 AUG/51
	A. EDWARD SIMPSON CONSULTING ELECTRICAL ENGINEER VANCOUVER, B. C.	SCALE 1/4" = 1'-0"
		DRAWING NO. E1