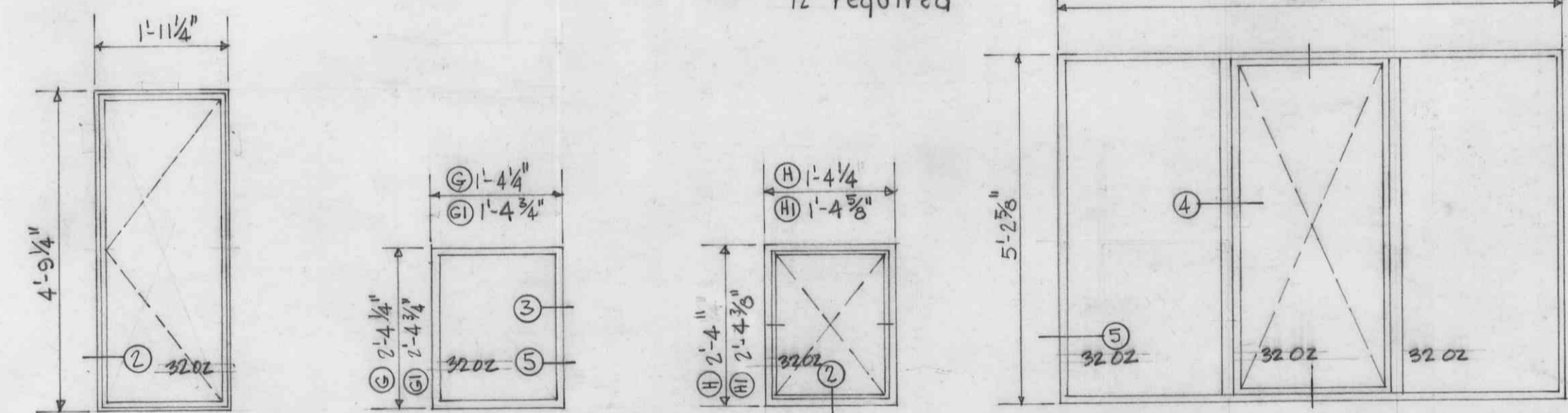
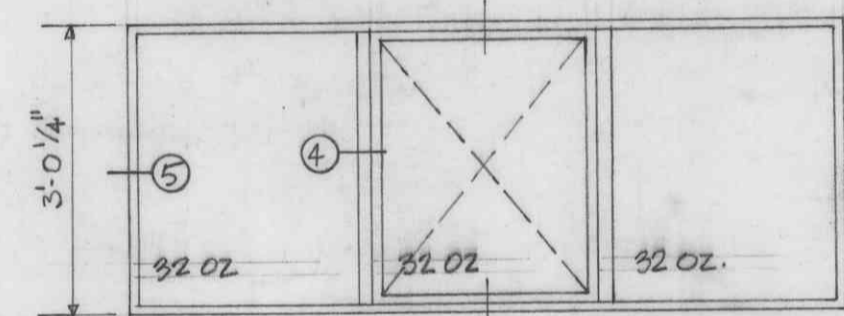


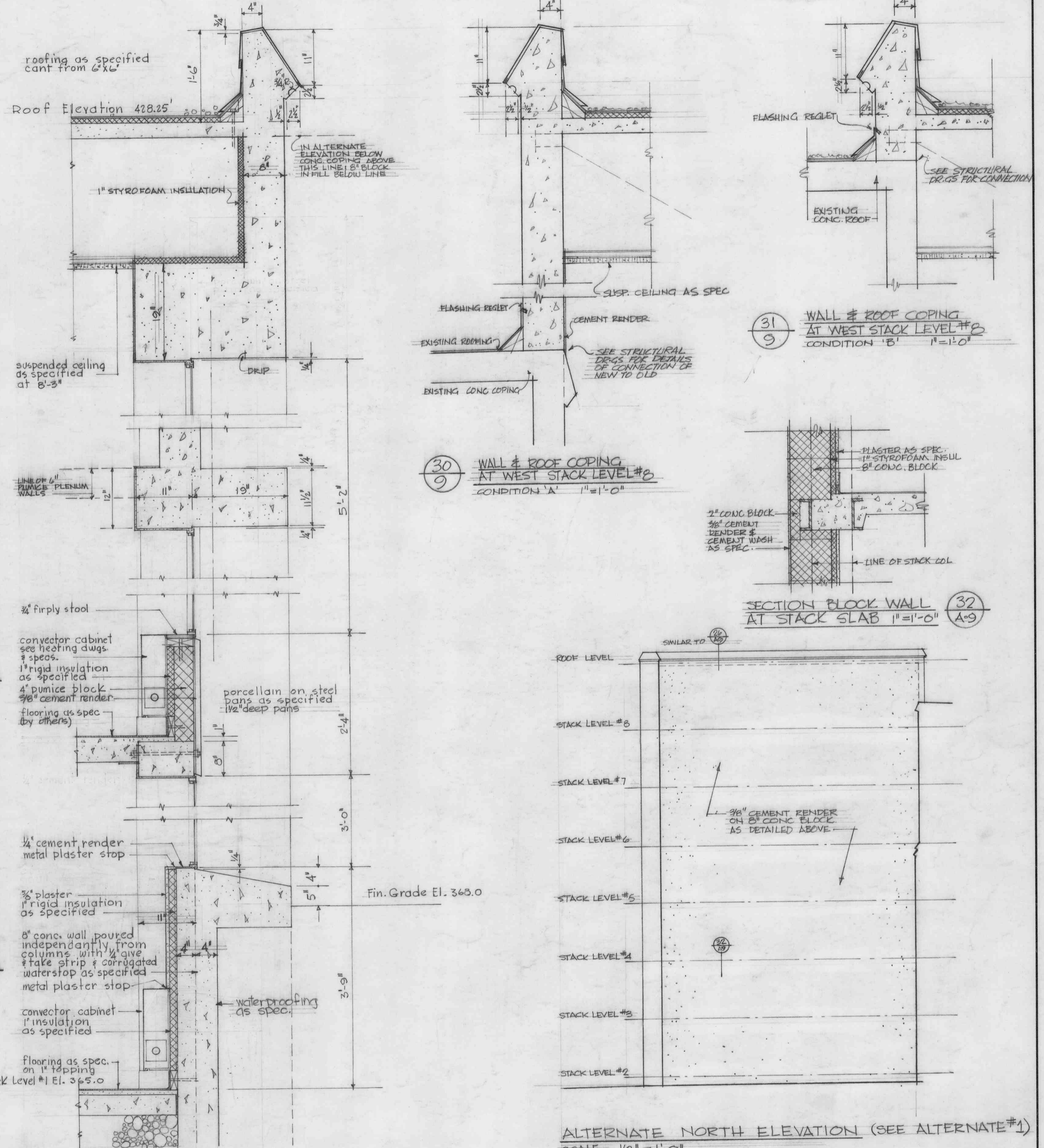
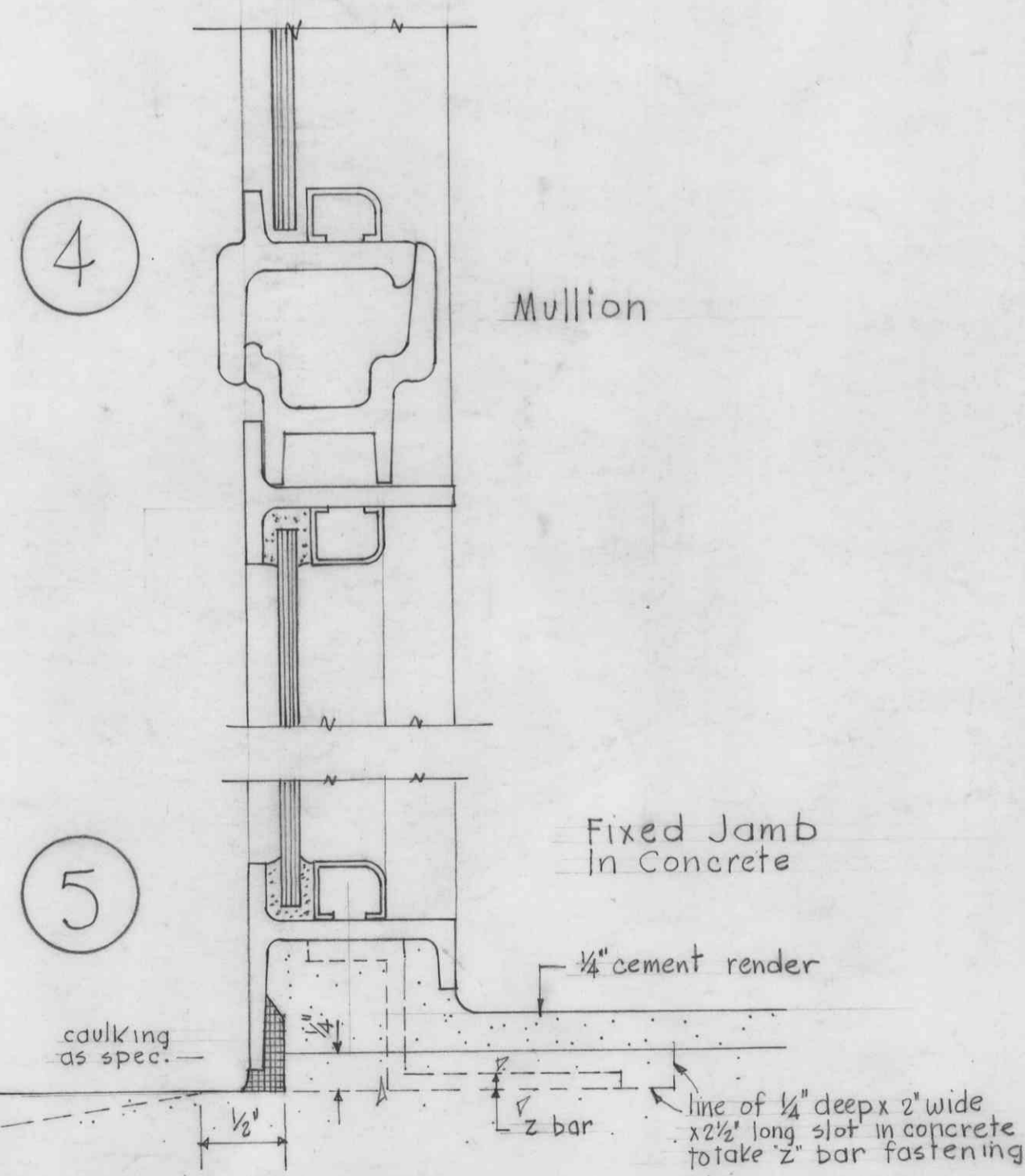
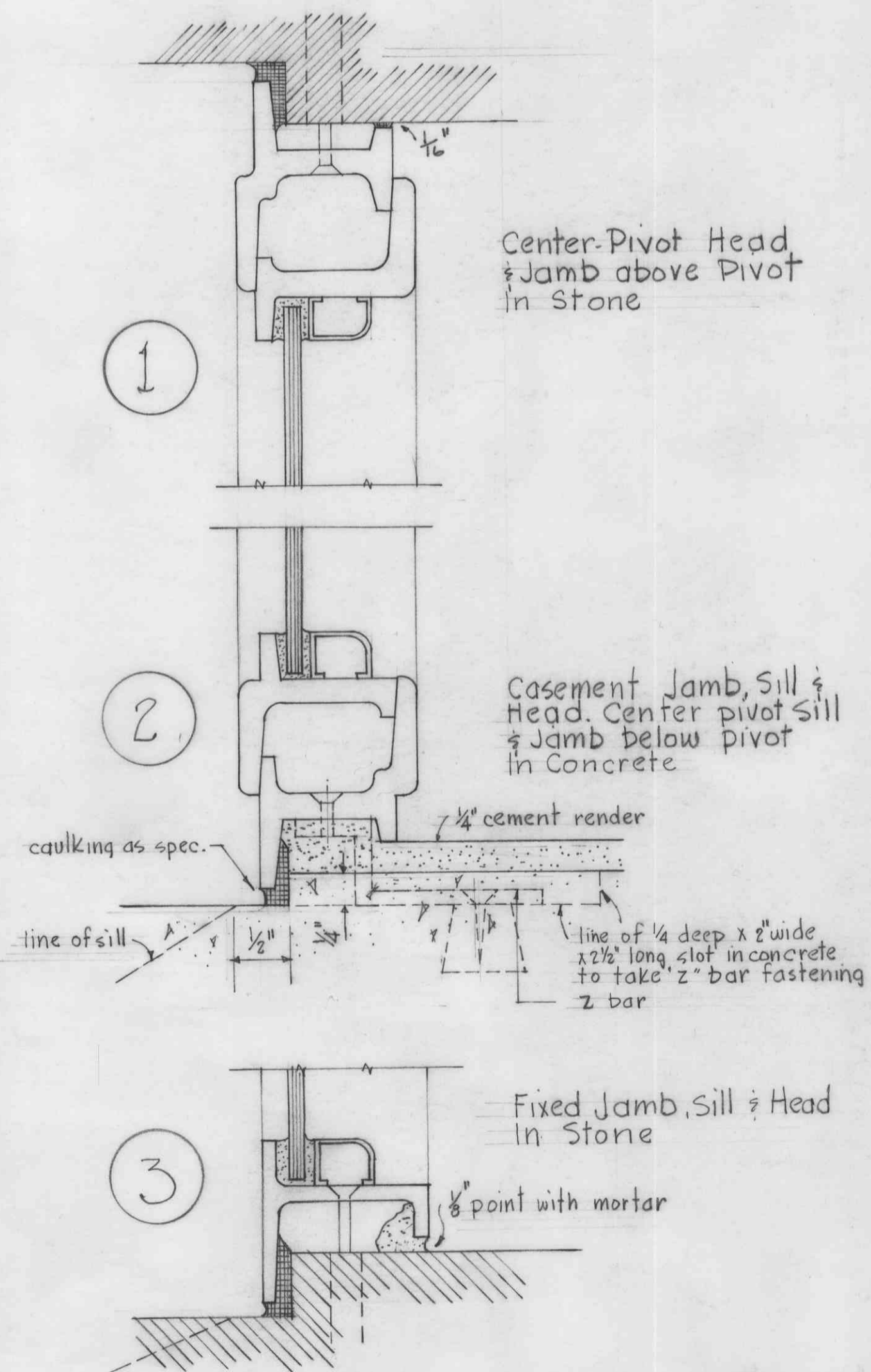
- (A) Fixed
In Concrete 114 req'd
In Stone 12 req'd
- (B) Horiz. Cent. Pivot
In Concrete 20 req'd
In Stone 8 req'd
- (C) Casement
12 required
Opposite Hand
12 required
- (D) Fixed
4 required
- (E) Horiz. Cent. Pivot
2 required



- (F) Casement
1 required
Opposite Hand
1 required
- (G) Fixed
In Conc. 8 req'd
In Stone 8 req'd
- (H) Horiz. Cent. Pivot
In Conc. 6 req'd
In Stone 8 req'd
- (J) Fixed & Vertical Cent. Pivot
133 required



- (K) Fixed & Vertical Cent. Pivot
133 required



DETAIL WALL SECTIONS THRU EAST WALL STACK AREA 1"=1'-0"

No.	DATE	REVISION

THOMPSON, BERWICK & PRATT ARCHITECTS
1555 ROBSON ST. VANCOUVER 5, B. C.

ADDITION TO THE LIBRARY UNIVERSITY OF BRITISH COLUMBIA
WINDOW & WALL SECTIONS
DRAWN: [Name] CHECKED: R.B.A. SCALE: AS SHOWN DATE: MAY 15 1959

SHEET No. A9 OF