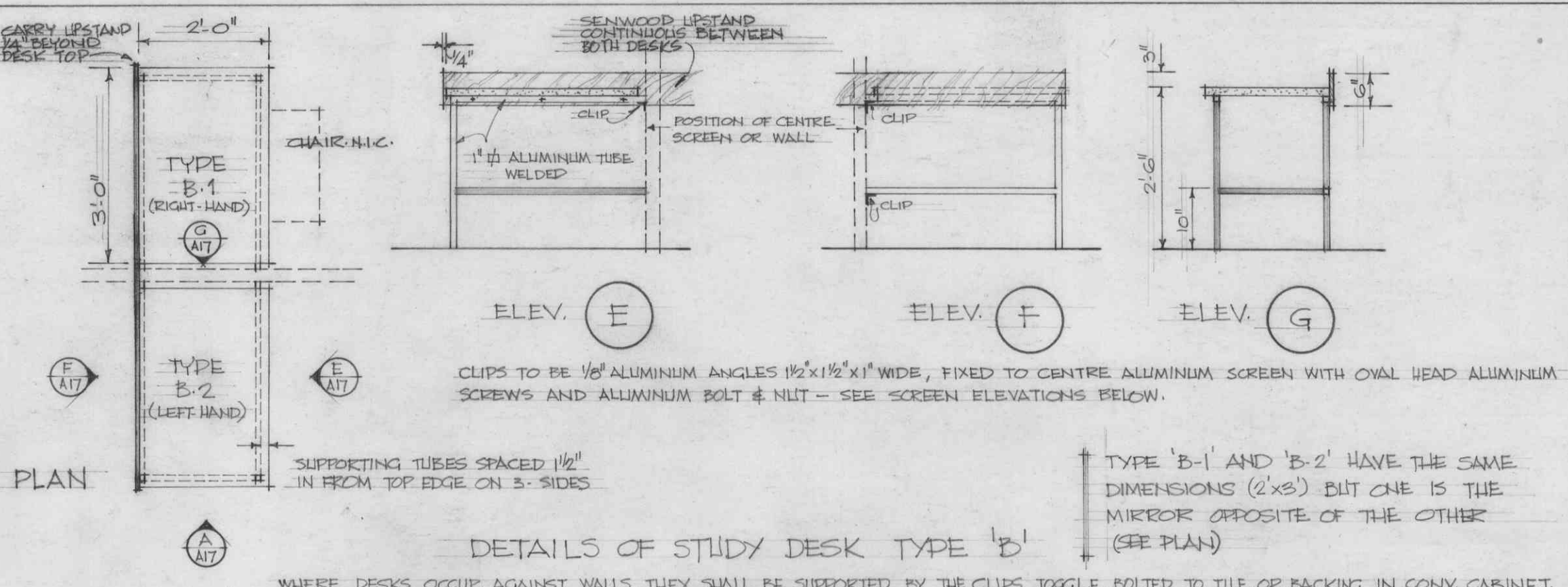
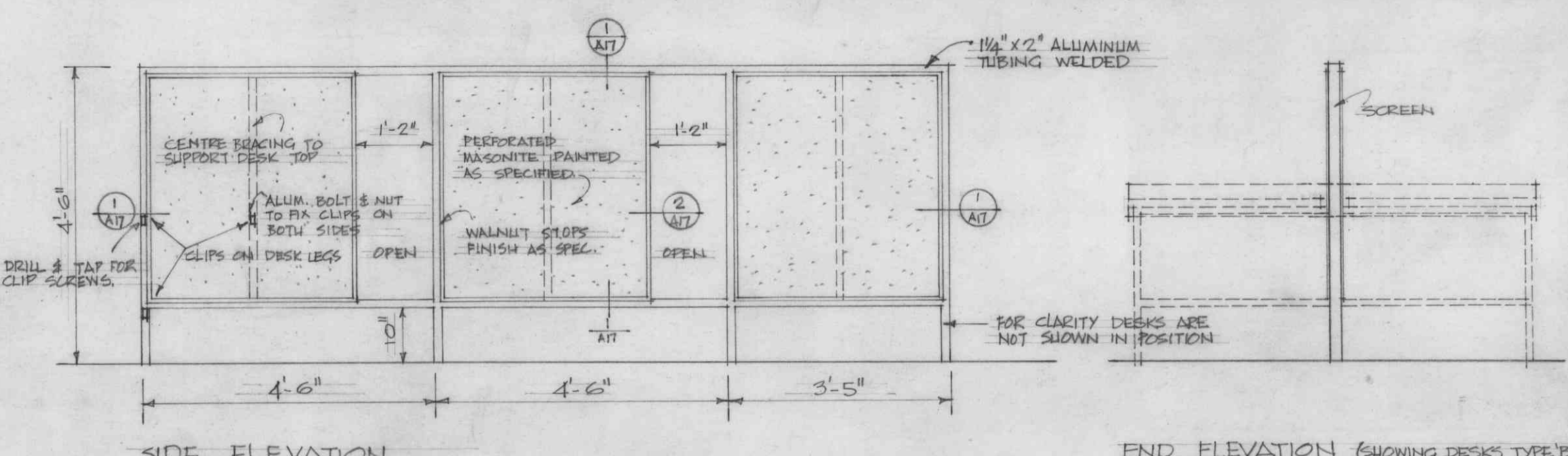


DETAILS OF STUDY DESK TYPE 'A'



DETAILS OF STUDY DESK TYPE 'B'

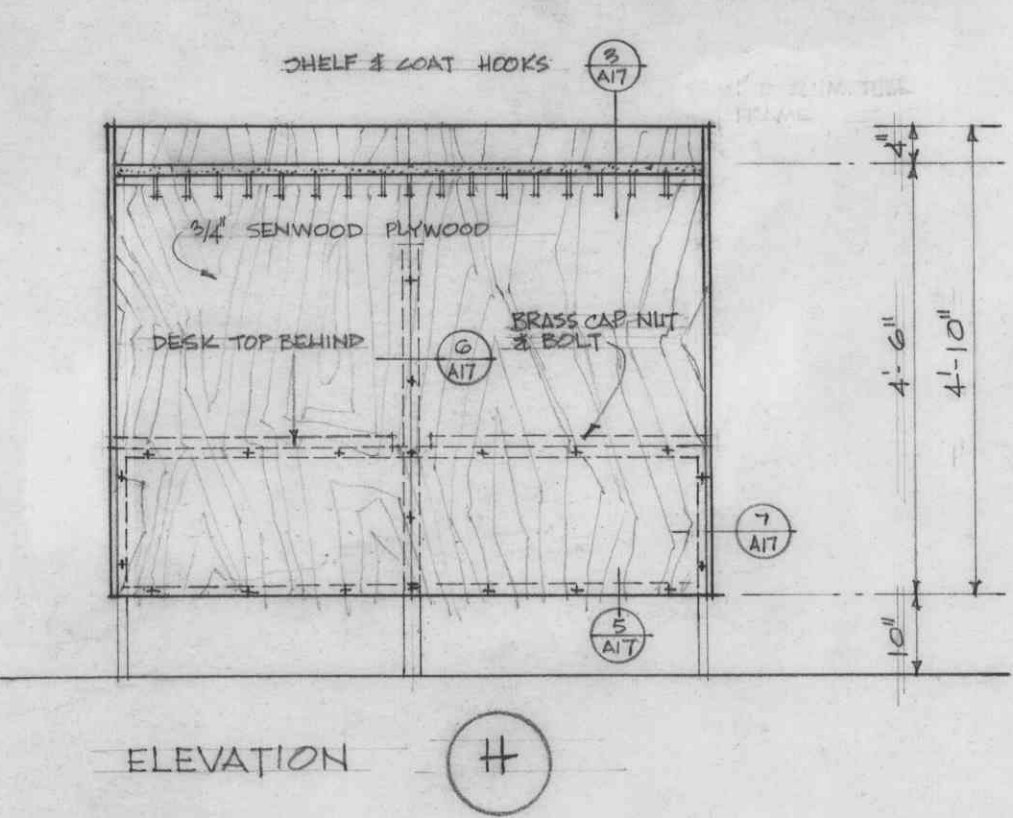


SIDE ELEVATION

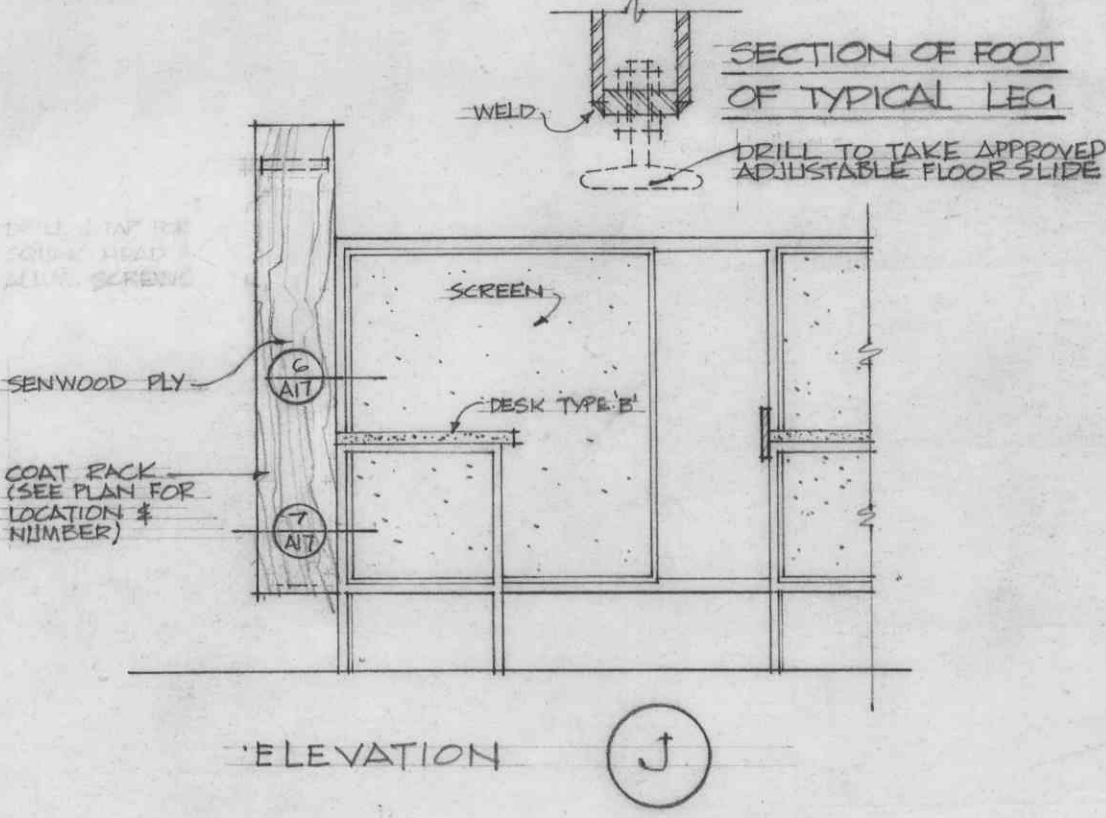
END ELEVATION (SHOWING DESKS TYPE 'B')

DETAILS OF CENTRE SCREEN BETWEEN STUDY DESKS TYPE 'B'

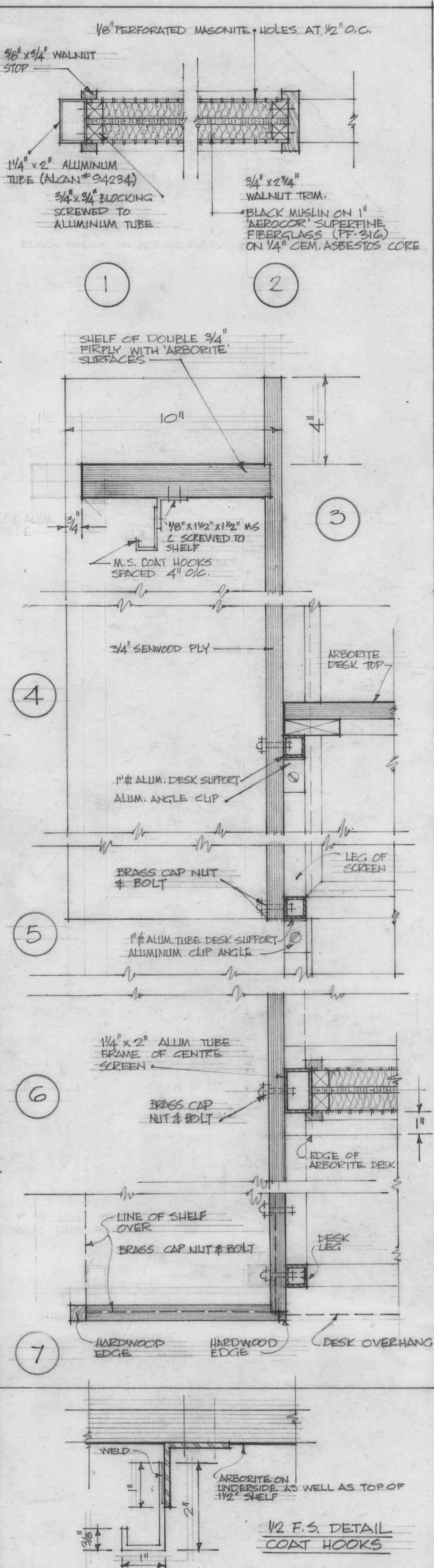
MOST OF THESE ARE 3 UNIT SCREENS AS SHOWN - BUT SOME ARE SMALLER & SOME LARGER - SEE SPEC.



ELEVATION H



ELEVATION J



GENERAL NOTES -
 THE GENERAL CONDITIONS AND "SPECIFICATION OF WORK FOR ADDITIONS TO THE LIBRARY - UNIVERSITY OF BRITISH COLUMBIA" SHALL APPLY TO THIS PORTION OF THE CONTRACT. SEE "FINISHED CARPENTRY & MILLWORK" SECTION FOR SPECIFICATION OF SENWOOD PLYWOOD & WALNUT TRIM.
 ALUMINUM TUBING FOR SCREEN, DESK LEGS, & COAT RACK FRAMES, AS WELL AS CLIPS FOR FASTENING SAME SHALL HAVE A POLISHED, ANODIZED FINISH (ME5/CE/AN).
 PERFORATED MASONITE SHALL BE PRE-PAINTED - BEFORE APPLYING TO MUSLIN WITH ONE SPRAY COAT OF SPECIAL HARD-FINISH SEMI-GLOSS LACQUER AS MANUFACTURED BY 'BAPCO' PAINTS. SAME SHALL BE APPLIED AS PER MANUFACTURERS SPECIFICATIONS.

GLASS FIBRE ACOUSTICAL BATTS SHALL BE 1" 'AEROCOR' SUPERFINE FIBERGLASS NO. PF-310 AS SUPPLIED BY FIBERGLASS (CANADA) LIMITED OR APPROVED EQUIVALENT.
 THE FIXING OF THESE UNITS SHALL INVOLVE CLIPPING DESK UNITS TO WALLS AND SCREENS AS DETAILED ABOVE AND INDICATED ON PLAN SHEETS A-1 TO A-5 OF THE CONTRACT DRAWINGS. SEE SPEC. FOR LIST OF NUMBERS REQ'D.
 ALL DESK TOPS SHALL BE SAME COLOR ARBORITE FURNITURE FINISH COLOR TO BE NO. 9401 "TAN SLICE"
 PANELS SHALL BE LACQUERED IN THREE DIFFERENT COLORS AND SHALL BE INSTALLED SO THAT ALL PANELS IN EACH SCREEN SHALL BE THE SAME COLOR IN ONE DIRECTION (ALTHOUGH REVERSE SIDE MAY BE THREE PANELS OF ANOTHER COLOR).

NUMBER (1) FEB. 18/60 REVISIONS IN DETAIL FOR TENDERING.			THOMPSON, BERWICK & PRATT ARCHITECTS 1555 ROBSON ST. VANCOUVER 5, B.C.		ADDITION TO THE LIBRARY UNIVERSITY OF BRITISH COLUMBIA		SHEET No.
					STUDY DESKS, SCREENS, & COAT RACKS		A17r
No.	DATE	REVISION			DRAWN R.E.A. CHECKED		SCALE 1/2" = 3'-10" DATE NOV. 10/59